

# Southeastern North Carolina Economic Conditions

January 9, 2014  
22<sup>nd</sup> Annual Economic Forecast  
Sponsored by:  
McGladrey  
Wilmington Chamber of Commerce  
Wilmington Business Development

William W. (Woody) Hall, Jr., Ph.D.  
Professor of Economics and Senior Economist  
H. David and Diane Swain Center for Business and Economic Services  
Cameron School of Business  
The University of North Carolina Wilmington  
[hall@uncw.edu](mailto:hall@uncw.edu)



UNIVERSITY *of* NORTH CAROLINA WILMINGTON

# Web Site for Slides

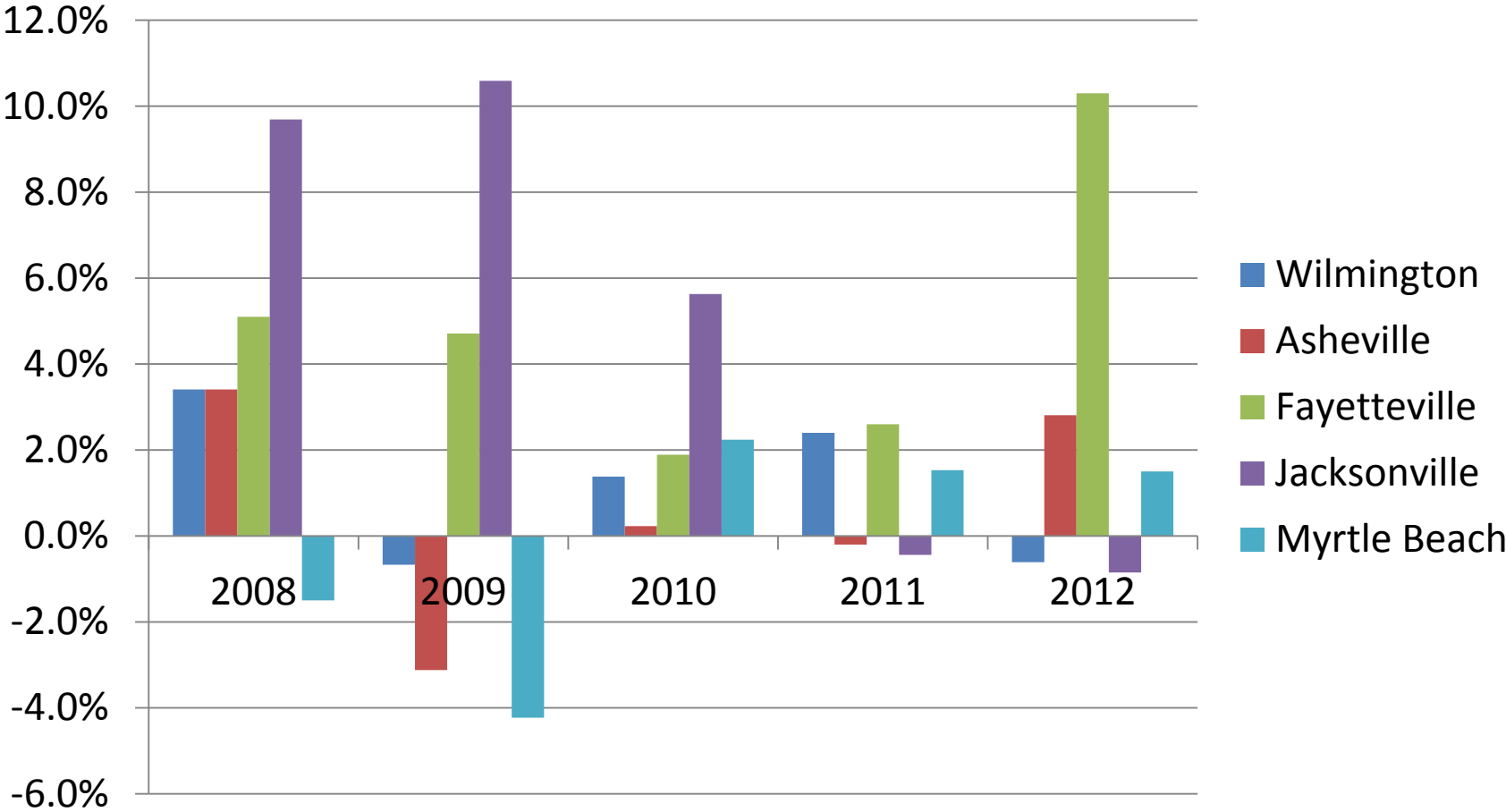
- <http://www.csb.uncw.edu/cbes/events/index.htm>

# Median Family Income (\$ Current)

	1990	2000	1990-2000 Annual Compound Growth Rate (%)	2012	Percent of State	2000-2012 Annual Compound Growth Rate (%)
Brunswick County	\$23,480	\$35,888	4.4	\$46,490	100.1	2.2
New Hanover County	\$27,320	\$40,172	4.0	\$50,420	108.5	2.0
Pender County	\$23,270	\$35,902	4.5	\$44,071	94.9	1.8
North Carolina	\$26,647	\$39,184	4.0	\$46,450		1.5

Source: US Bureau of the Census.

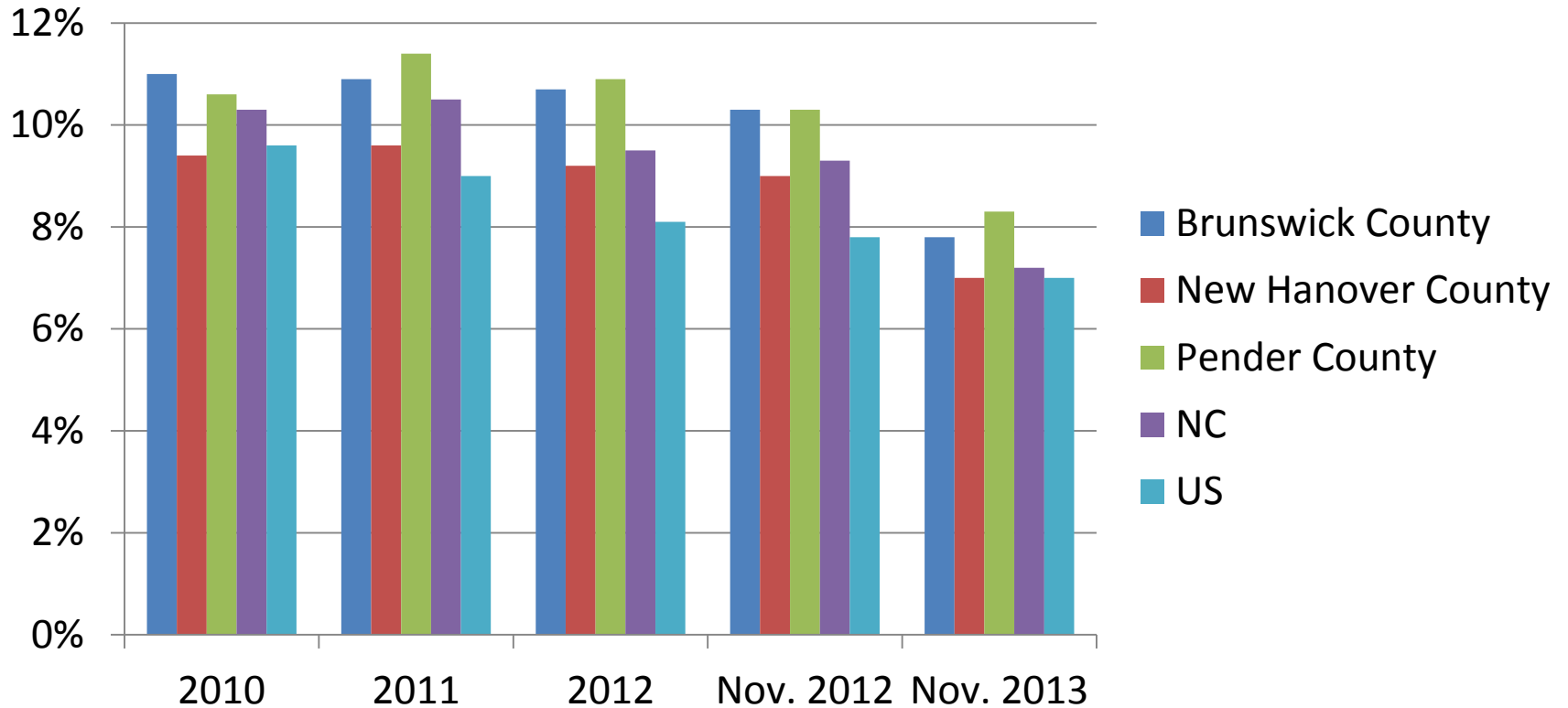
# Metropolitan Statistical Area (MSA) Real Gross Domestic Product (GDP) Growth Rates



Source: Bureau of Economic Analysis, U.S. Department of Commerce.

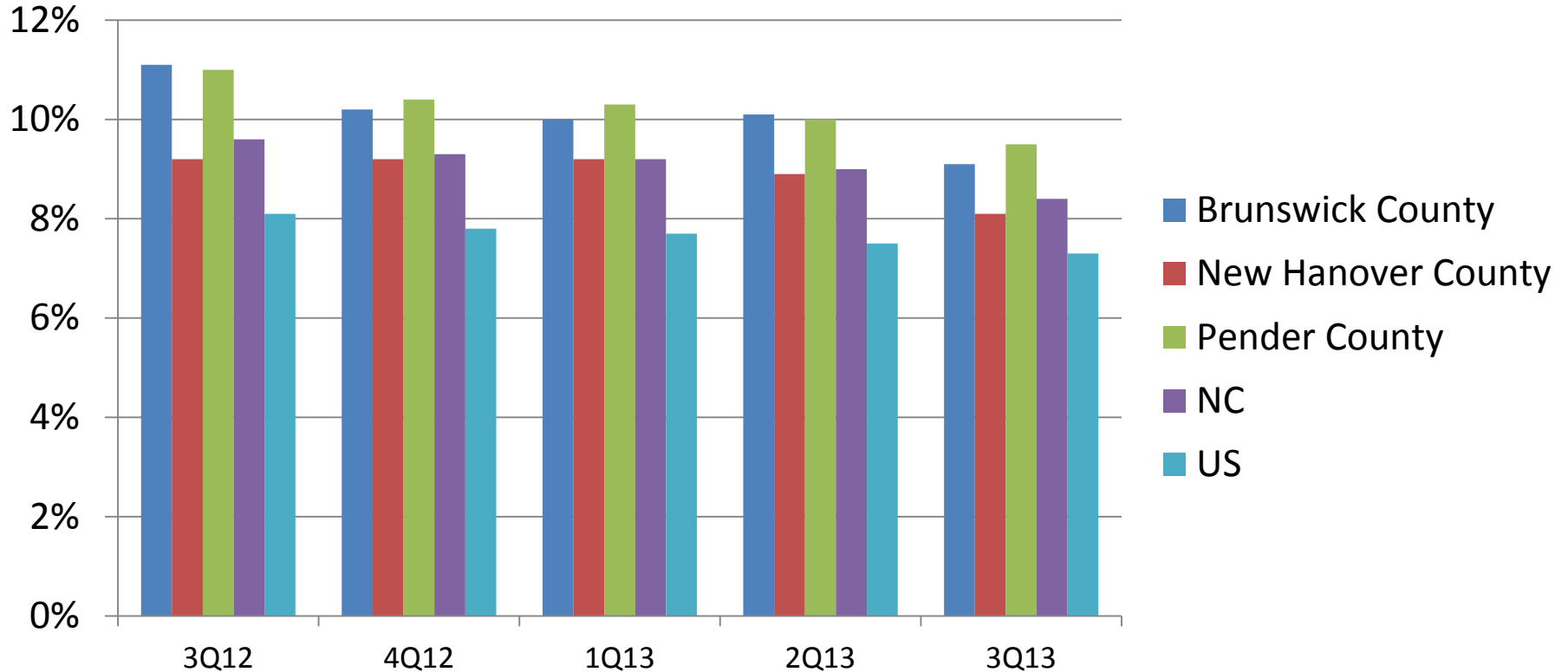


# Unemployment Rates



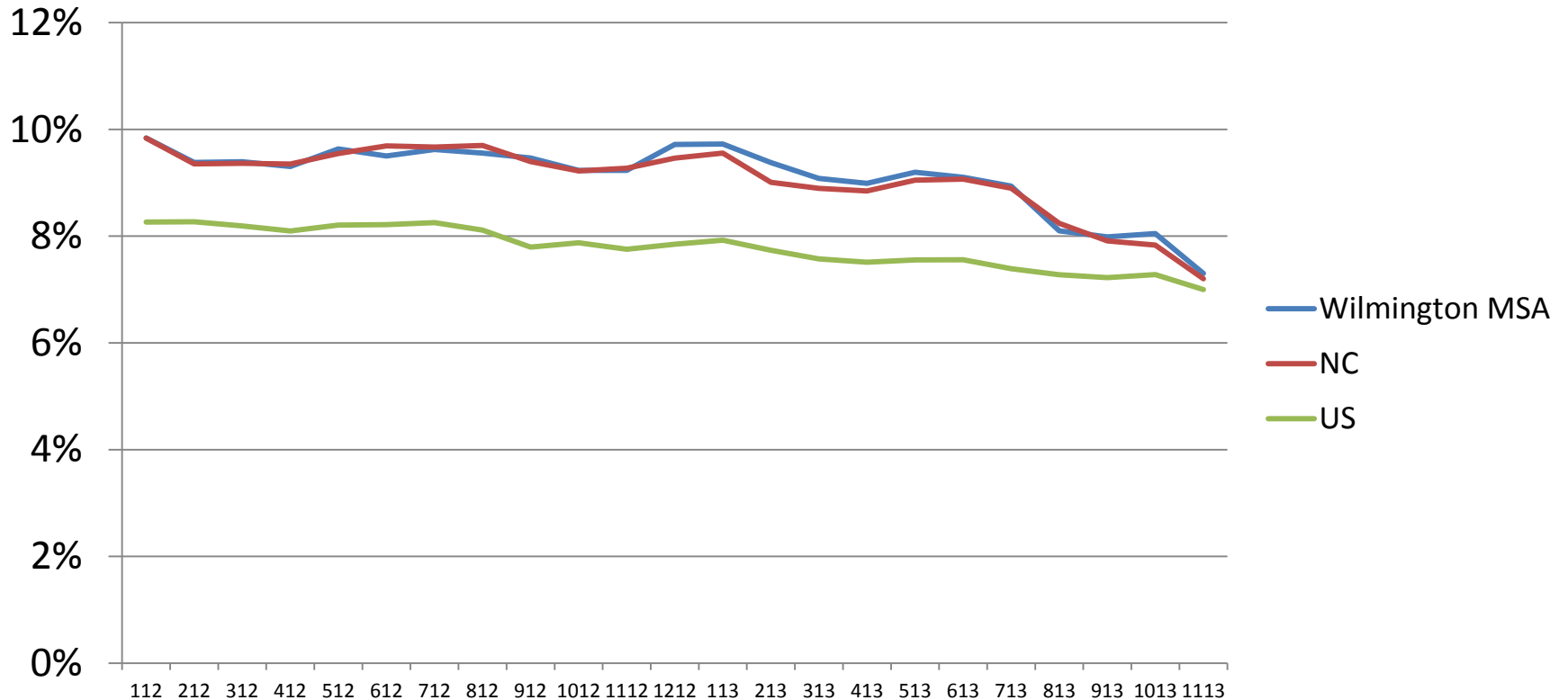
Source: Division of Employment Security, NC Department of Commerce; Bureau of Labor Statistics, US Department of Labor.

# Average Monthly Unemployment Rates



Source: Division of Employment Security, NC Department of Commerce; Bureau of Labor Statistics, US Department of Labor.

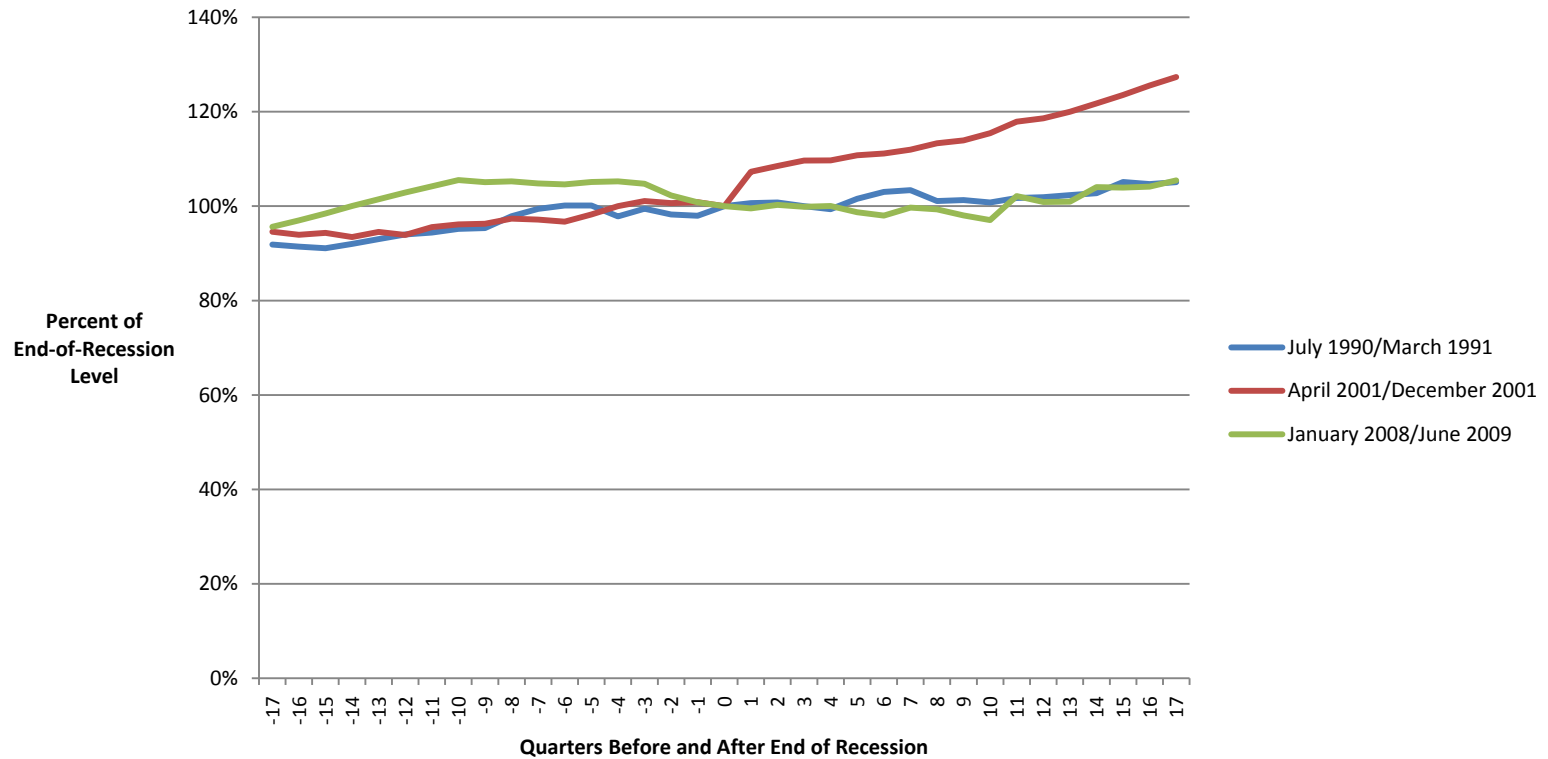
# Unemployment Rates (Seasonally Adjusted)



Source: Division of Employment Security, NC Department of Commerce;  
Bureau of Labor Statistics, US Department of Labor.



# Wilmington MSA Employment “Spider” Chart (New Hanover and Pender Counties)

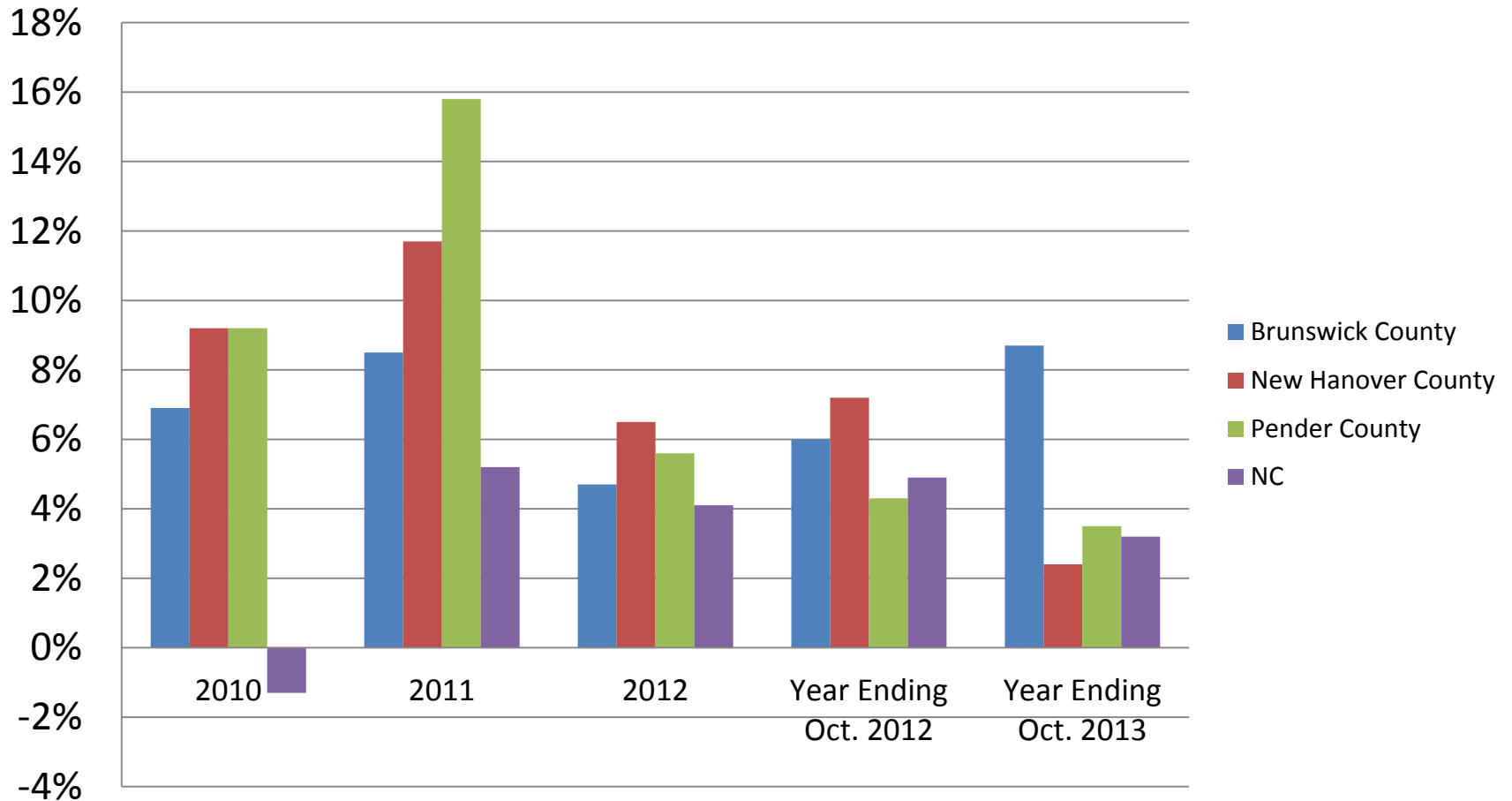


Source: Division of Employment Security Commission, NC Department of Commerce.





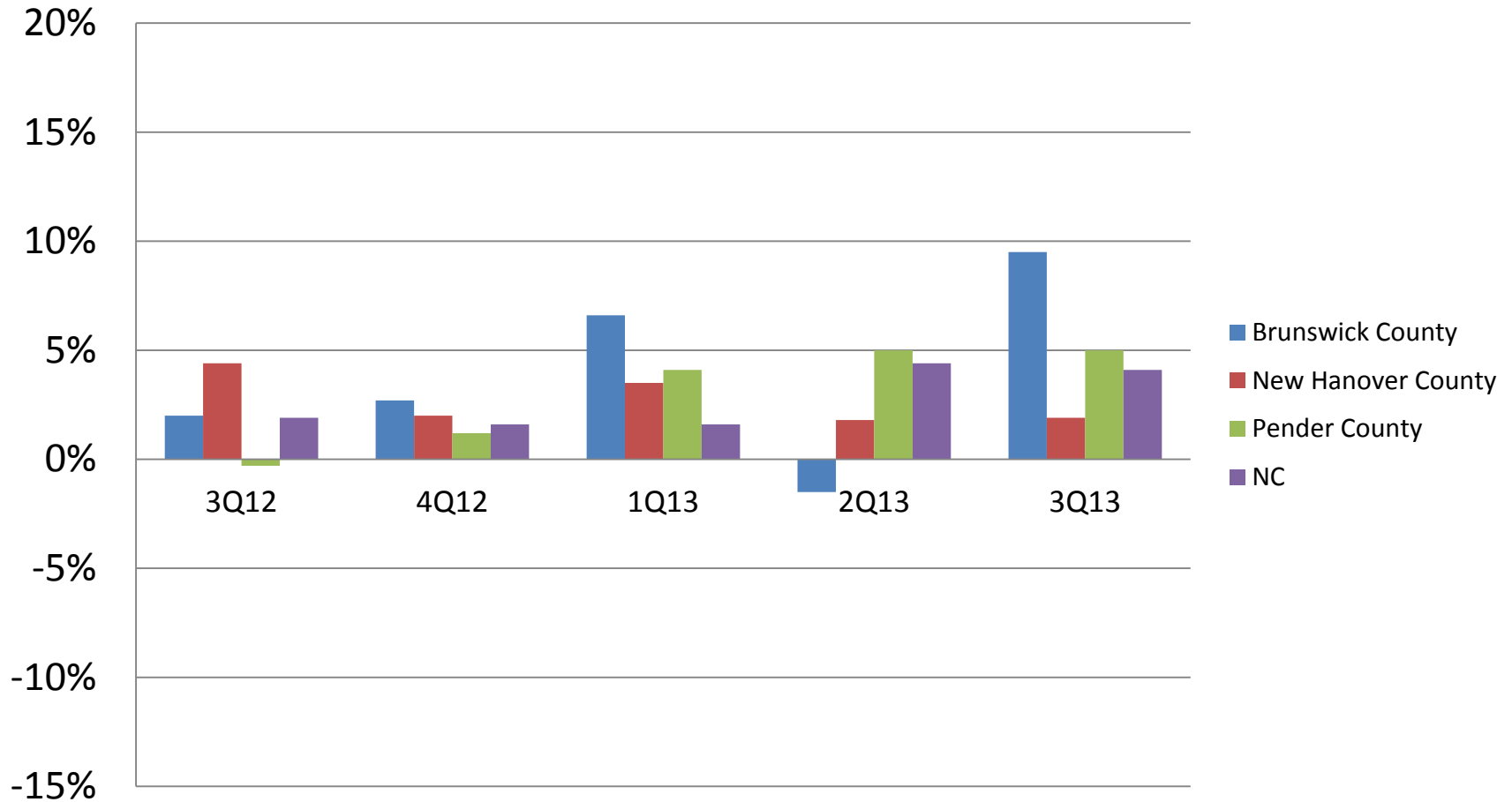
# Retail Sales Growth Rates



Source: NC Department of Revenue.



# Retail Sales Growth Rates (Compared to Year-Earlier Quarter)



Source: NC Department of Revenue.



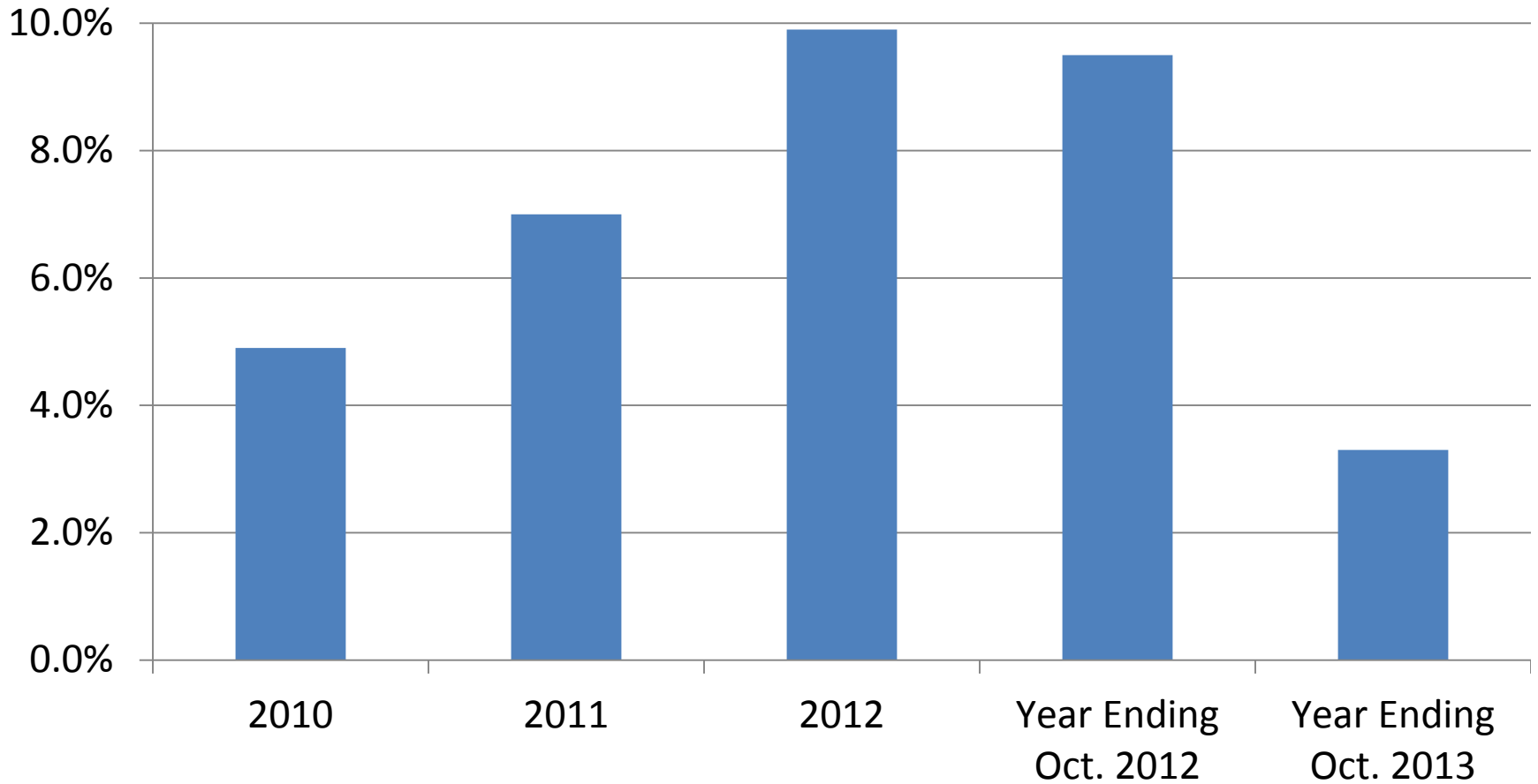
# Tourism Expenditures (\$ Millions)

Area	2012	2011	% Change 2011-12	2012 Rank in State
Brunswick County	\$445.9	\$418.0	6.7	10
New Hanover County	\$460.0	\$425.8	8.0	9
Pender County	\$80.6	\$76.4	5.5	43
North Carolina	\$19,410.6	\$18,421.0	8.3	

Source: Division of Tourism, Film and Sports Development, NC Department of Commerce.



# New Hanover County Room Tax Collections Growth Rates

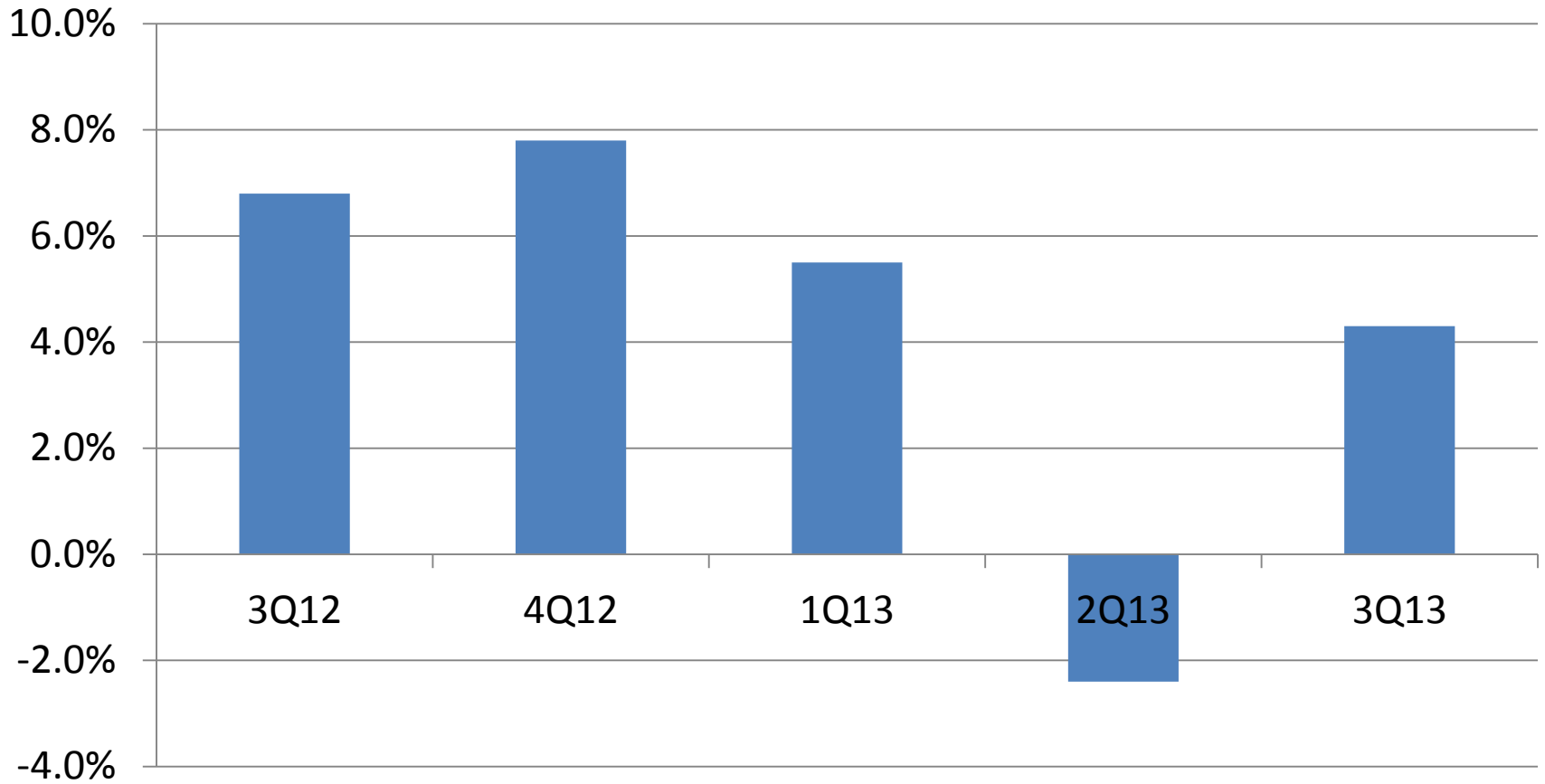


Source: New Hanover County Manager's Office.



# New Hanover County Room Tax Collections Growth Rates

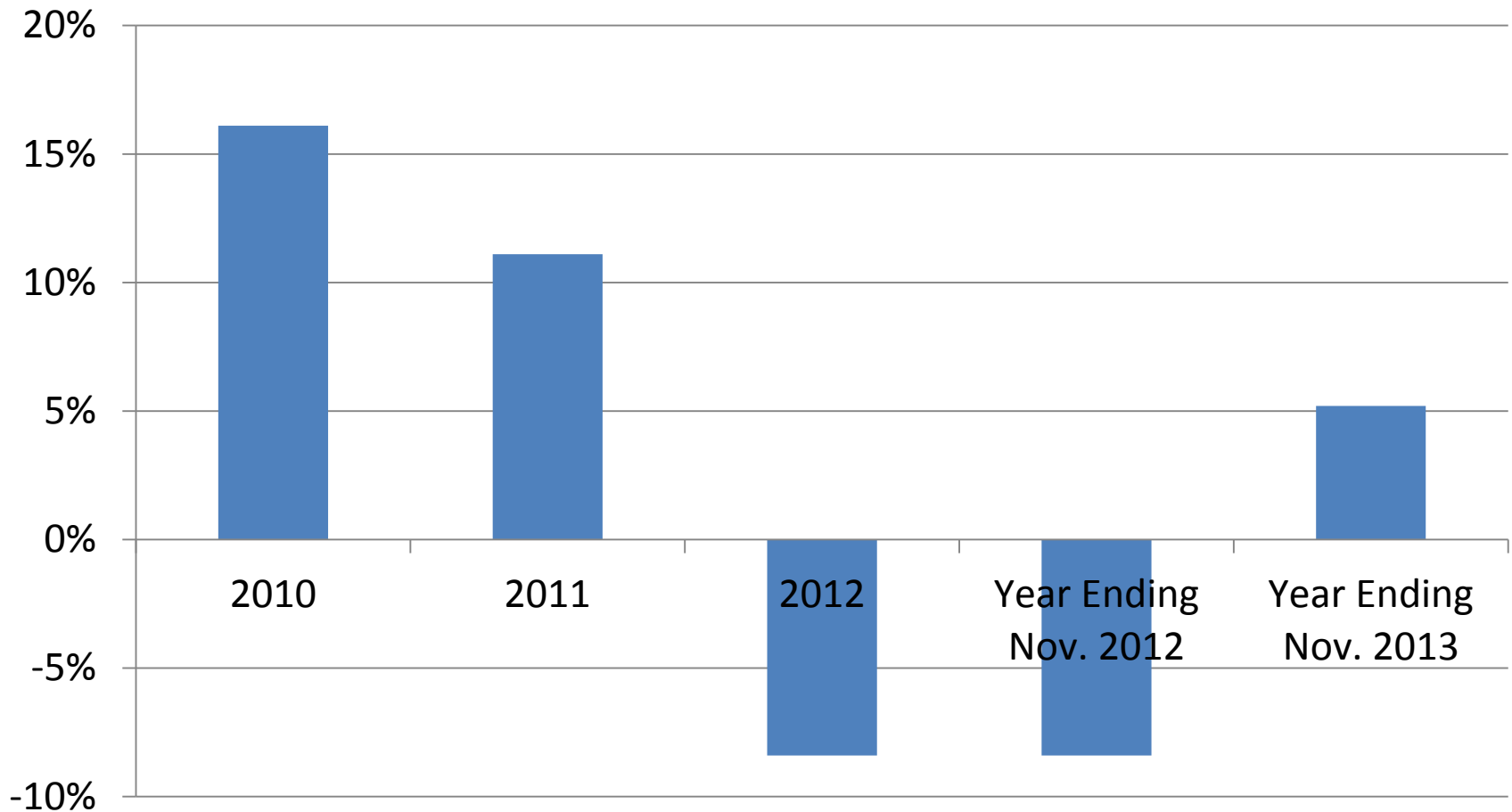
(Compared to Year-Earlier Quarter)



Source: New Hanover County Manager's Office.



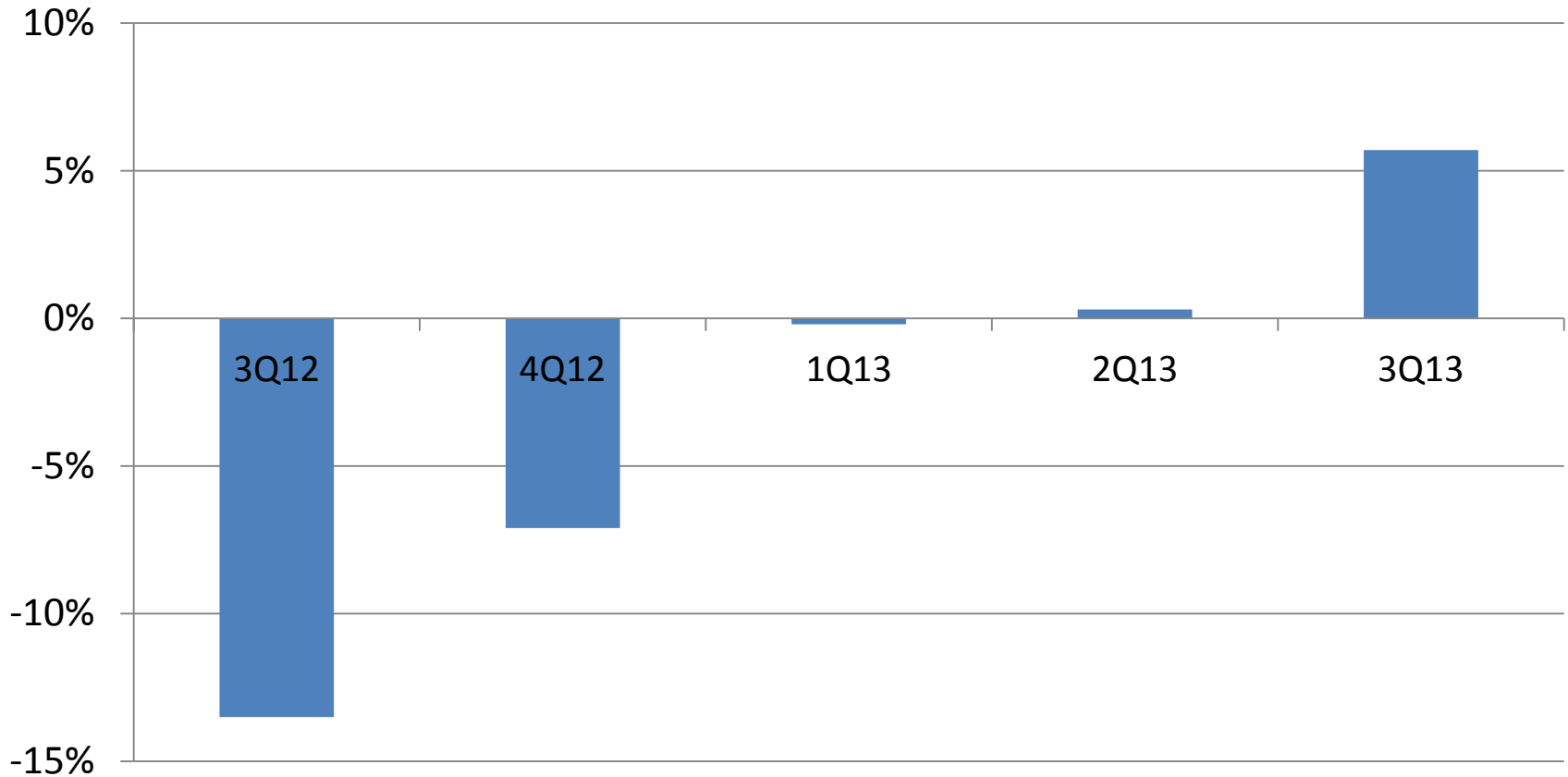
# Port of Wilmington Container Tonnage Growth Rates



Source: NC State Ports Authority.



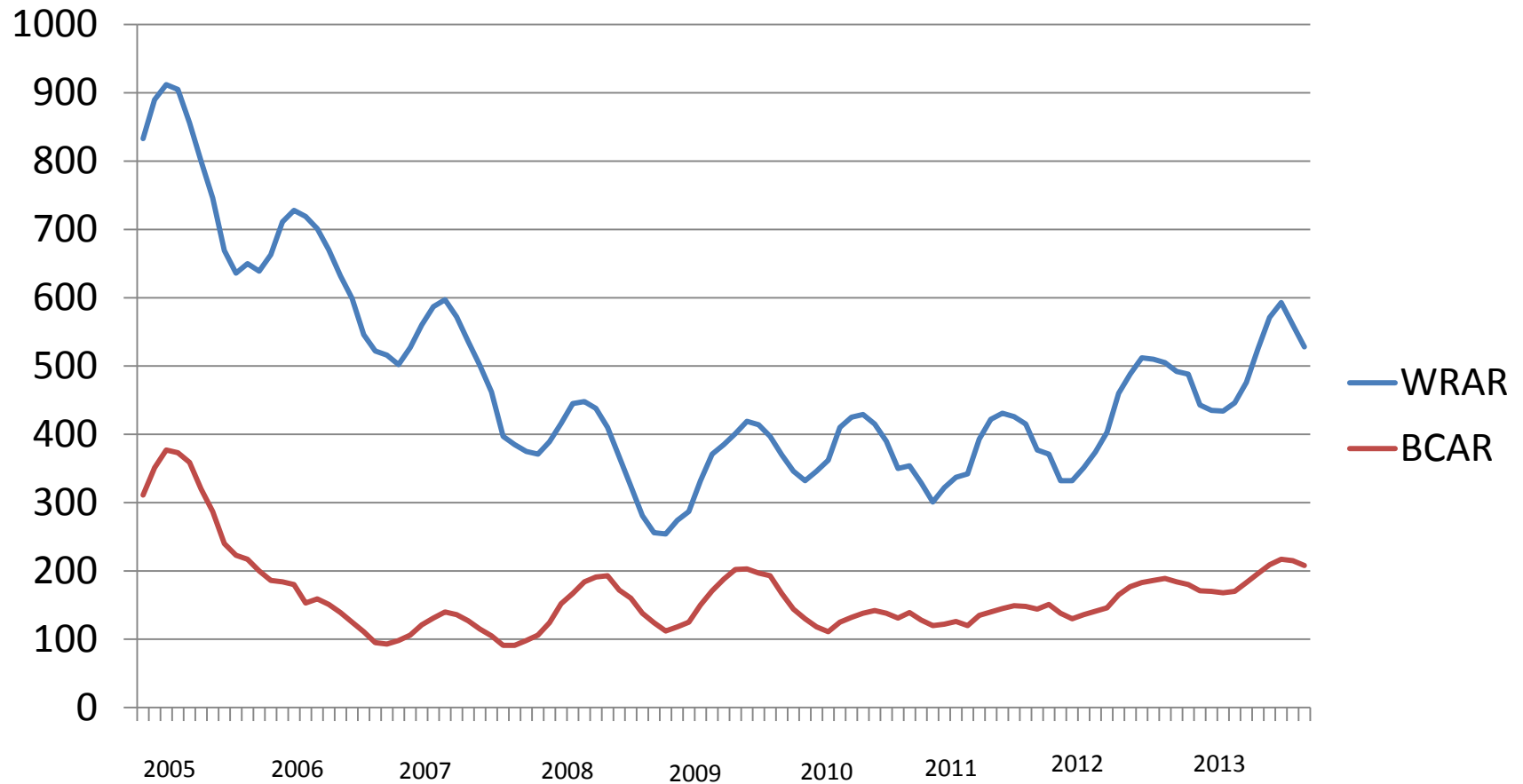
# Port of Wilmington Container Tonnage Growth Rates (Compared to Year-Earlier Quarter)



Source: NC State Ports Authority.



# Existing Single-Family Home Sales (5-Month Centered Moving Average)

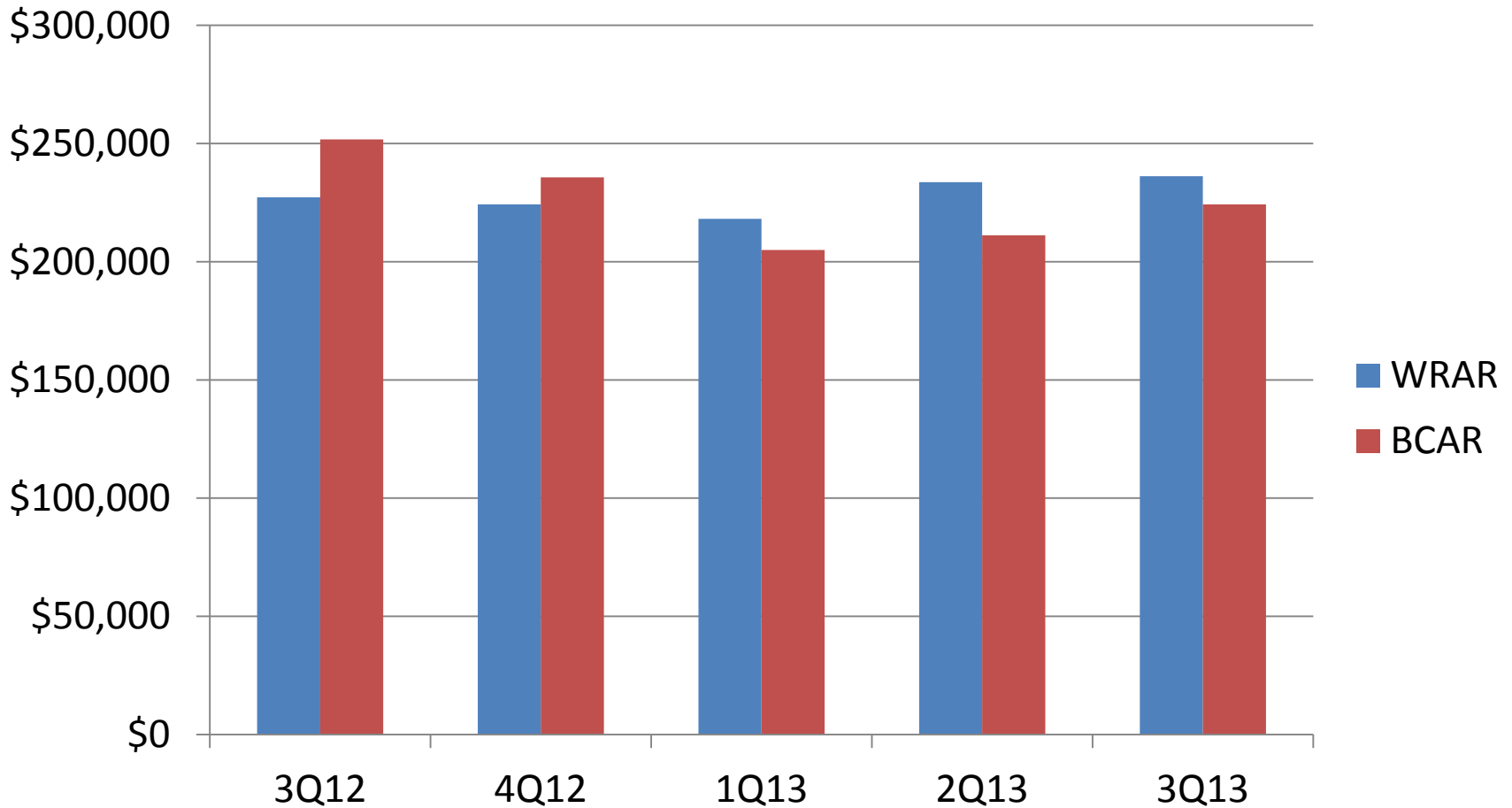


Source: NC Association of Realtors.





# Average Quarterly Sales Prices of Existing Single-Family Homes



Source: NC Association of Realtors.



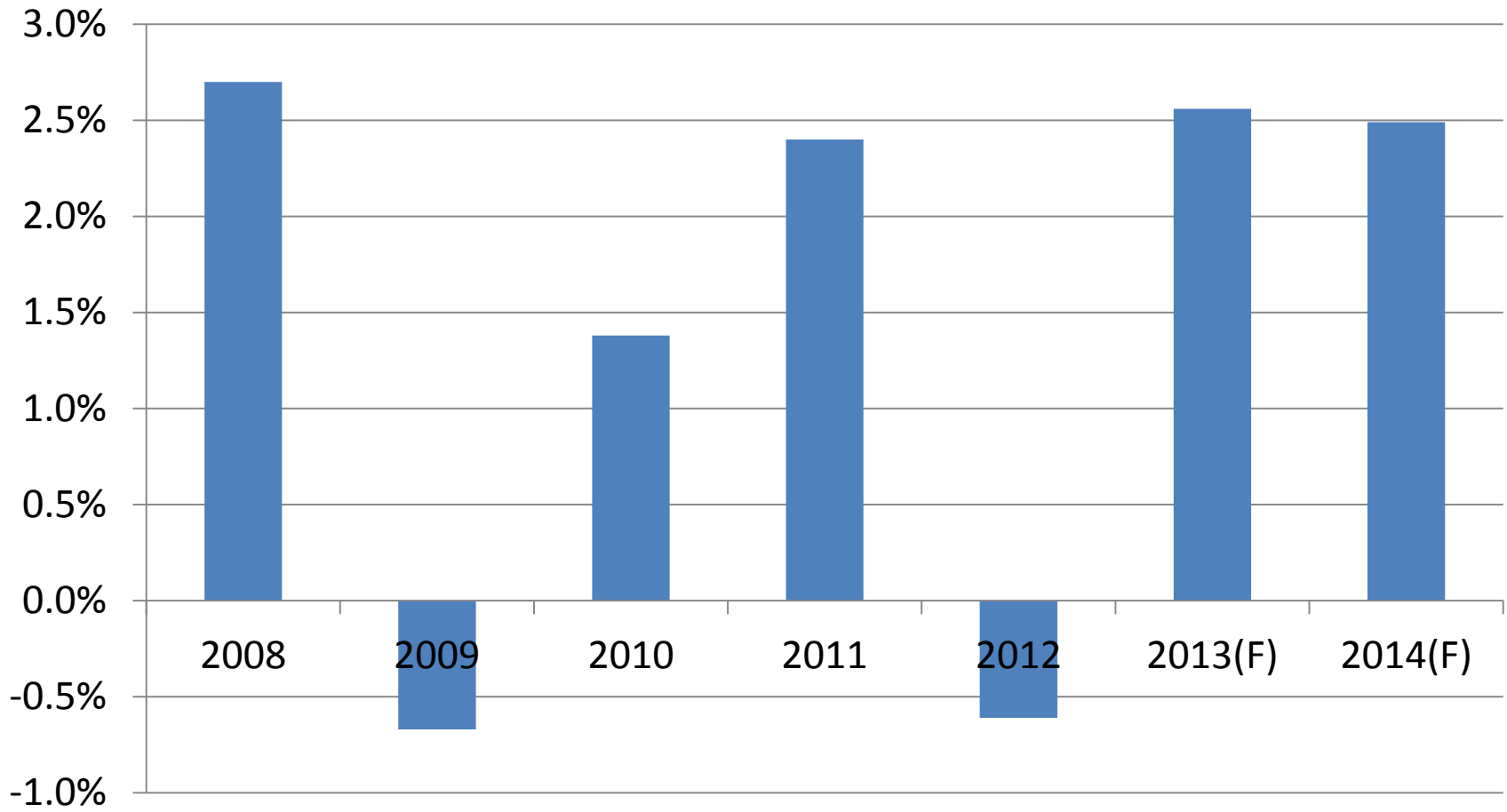
# Foreclosures

	Brunswick County	New Hanover County	Pender County	North Carolina
2010	1,693	1,881	521	66,296
% Change 2009-10	3.1	26.8	10.1	10.0
2011	1,458	1,559	419	53,218
% Change 2010-11	-13.9	-17.1	-19.6	-19.7
2012	1,173	1,432	426	54,749
% Change 2011-2012	-19.5	-8.1	1.7%	2.8
Year Ending Oct. 2013	969	1,037	378	47,249
% Change from Year Ending Oct. 2012	-20.0	-27.5	-8.5	-11.9

Source: NC Administrative Office of the Courts.



# Wilmington MSA Real Gross Domestic Product (GDP) Growth Rates (New Hanover and Pender Counties)




Source: Bureau of Economic Analysis, U.S. Department of Commerce; Ravija Badarinathi and William W. Hall, Jr., for the H. David and Diane Swain Center for Business and Economic Services, Cameron School of Business, UNC Wilmington.




# Quarterly Barometer

<http://www.csb.uncw.edu/cbes/newsletter/index.htm>



CAMERON SCHOOL OF BUSINESS  
H. DAVID AND DIANE SWAIN CENTER FOR BUSINESS AND ECONOMIC SERVICES

## Economic Barometer



Volume V, Issue 4 November 2013

### Recent Developments on the National Economy

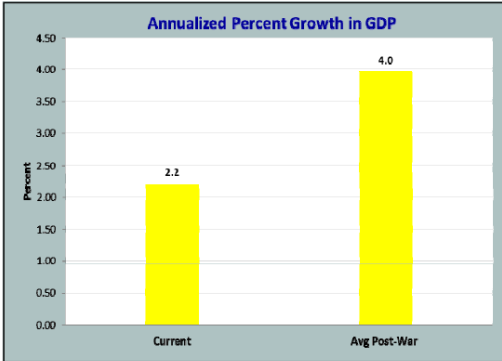
Slow growth. The U.S. economy this year has continued to register the kind of sluggish growth that has been characteristic of this recovery. As shown in the table below, growth in real GDP has averaged only a 2-percent annual pace this year. Moreover, a third of growth this year has come from a buildup in inventories, implying that final demand has grown at less than a 1-1/2 percent rate.

Growth in Real GDP  
(Percent change, annual rate)

2010	2011	2012	2013		
			Q1	Q2	Q3
2.8	2.1	2.5	1.1	2.5	2.8

To be sure, growth this year has been held down by restrictive federal fiscal measures that have taken the form of tax increases and sequester cuts in defense and non-defense spending. At the same time, monetary policy has been highly accommodative.

### Annualized Percent Growth in GDP



Category	Percent
Current	2.2
Avg Post-War	4.0

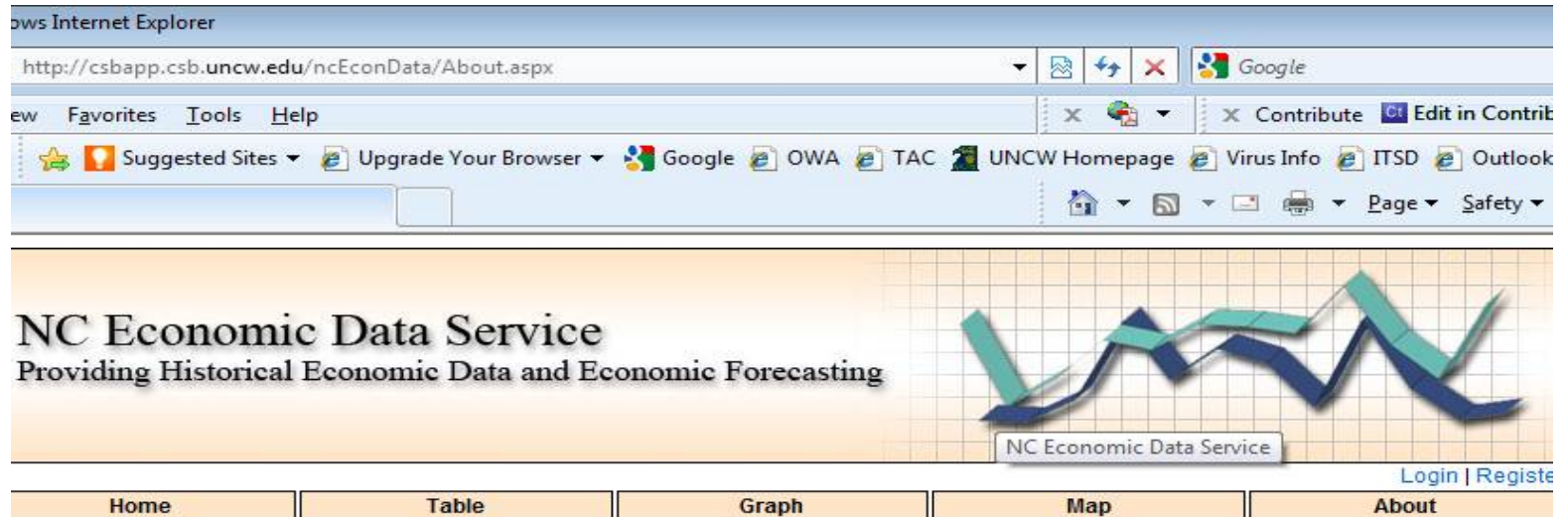
Learn about our benefactors, H. David and Diane Swain at [www.csb.uncw.edu/swaincenter](http://www.csb.uncw.edu/swaincenter)

INSIDE THIS ISSUE:

- The US Economy 1
- Growth in GDP 1
- Diminished Headwinds 2
- Household Wealth to Income 3
- U.S. Dollar Index 3
- Hightened uncertainty 4
- Outlook and PCE Index 5
- The Local Economy 6
- Wilmington Unemployment 7
- Employment and Wages 8
- New Incorporations 8
- Retail Sales Growth Rates 9
- Port Container Tonnage Growth 9
- Housing 10

# Online Data

<http://csbapp.csb.uncw.edu/ncecondata>



The screenshot shows a Microsoft Internet Explorer browser window displaying the NC Economic Data Service website. The address bar shows the URL <http://csbapp.csb.uncw.edu/ncecondata/About.aspx>. The browser's menu bar includes 'File', 'Favorites', 'Tools', and 'Help'. The toolbar contains various icons for navigation and utility. The website content features a header with the text 'NC Economic Data Service' and 'Providing Historical Economic Data and Economic Forecasting'. To the right of the text is a 3D line graph with two data series, one in blue and one in green, plotted on a grid. Below the graph is a navigation menu with buttons for 'Home', 'Table', 'Graph', 'Map', and 'About'. In the bottom right corner of the page, there are links for 'Login' and 'Register'.

## About The Site

UNCW's Economic Web Service provides twenty years of historical economic data for the southeastern United States. This publicly available data is presented in tables and graphs that can be searched and sorted by specific parameters. It also features a back-end system for administrators to record new data and manipulate old data. The goal of this service is to develop economic models based on historical and emerging trends using accepted forecasting procedures. Government agencies and businesses will then have the capability to use these models to forecast future economic growth for a particular region or industry.

Funding and support for this website comes from Progress Energy and the Center for Business and Economic Services at the University of North Carolina Wilmington. All economic data and analysis was collected and analyzed by Senior Economist Woody Hall. Website design and development supported by Dr. Tom Janicki, Information Systems Department and Josh Tobey, Masters Student in Computer Science and Information Systems at UNCW.