



Academic Affairs Organization



Background

- **Univ. Studies/QEP position and feedback**
- **Leadership transitions**
- **Review/consultation re Academic Affairs structure:**
 - **Lack of coherency in portfolios of responsibility**
 - **Historical rather than forward-looking**
 - **Not reflective of COO model implementation**
 - **Opportunities for enhanced effectiveness, efficiency and responsiveness**



Division of Academic Affairs Staff Organizational Chart

Gary L. Miller
Chancellor

Denise A. Battles
Provost and Vice Chancellor
for Academic Affairs

David P. Cordle
Dean,
College of Arts and
Sciences

Lawrence Clark
Dean,
Cameron School
of Business

Kenneth Teitelbaum
Dean,
Watson College of
Education

Charles Hardy
Dean,
College of Health
and Human
Services

Leah Kraus
Interim Chief
Information
Officer

Robert Roer
Dean, Graduate
School and
Research

Daniel G. Baden,
Dean/Director
Center for Marine
Science

Norman Bemelmans
Director,
Cultural Arts

Anthony Vaughn
Director,
Space Planning and
Management

Tina A. Strickland
Facilities Use
Manager

Caroline Clements
Director, Center for
Teaching Excellence and
Faculty Leadership

Johnson O. Akinleye
Associate Vice Chancellor for
Academic Programs

Director, Onslow Extension
Program & UNCW Military
Liaison

Katherine E. Bruce
Director,
Honors College

Robert Morgan
Liaison, Isaac Bear Early
College

Patricia Deanes
Business Officer
Summer School &
Distance Education

Sheri Anderson
Coordinator/Faculty E-
Learning

Patricia Gonzalez-McQuiston,
Coordinator,
E-Learning

Lisa Theriault
Publisher, Web-Based Acalog

Lifelong Learning

Professional and
Organizational Development

Stephen L. McFarland
Vice Provost

Martin Posey,
University SACS
Accreditation Liaison

Kim Cook,
University QEP Topic
Development Coordinator

Linda Siefert,
University General
Education Assessment

Sarah Watstein
University Librarian
William Madison Randall
Library

Lisa Castellino
Assistant Vice Chancellor
for Institutional Research
and Assessment

Denise DiPuccio
Assistant Provost for
International Programs

Terry M. Curran
Associate Provost for
Enrollment
Management

Janice H. Rockwell
Director of Admissions

Gilbert Bowen
University Registrar

Emily J. Bliss
Director of Financial
Aid and Veterans
Services

Kemille S. Moore
Dean,
University College

Linda Reece
Research Assistant

Jose E. Hernandez
Associate Provost for
Institutional Diversity and
Inclusion

Edelmira Segovia
Director of
Centro Hispano

Todd McFadden
Director, Upperman
African American
Cultural Center

Michelle Scatton-Tessier
Director,
Women's Studies &
Resource Center

Kimberly McLaughlin-
Smith
Program Coordinator,
Multicultural Affairs
Center

Amy Schlag,
Program Coordinator
LGBTQIA Resource
Center

Adalia Jessie Sova
Assistant Vice
Chancellor for Resource
Management

Sherri Batson
Assistant Director,
Resource Management

Claire Primrose
Administrative
Associate

F. Trent Rackley
Business Services
Coordinator/Budget

Susan Gray
Business Services
Coordinator/Personnel

Jan Johnson
Administrative
Specialist

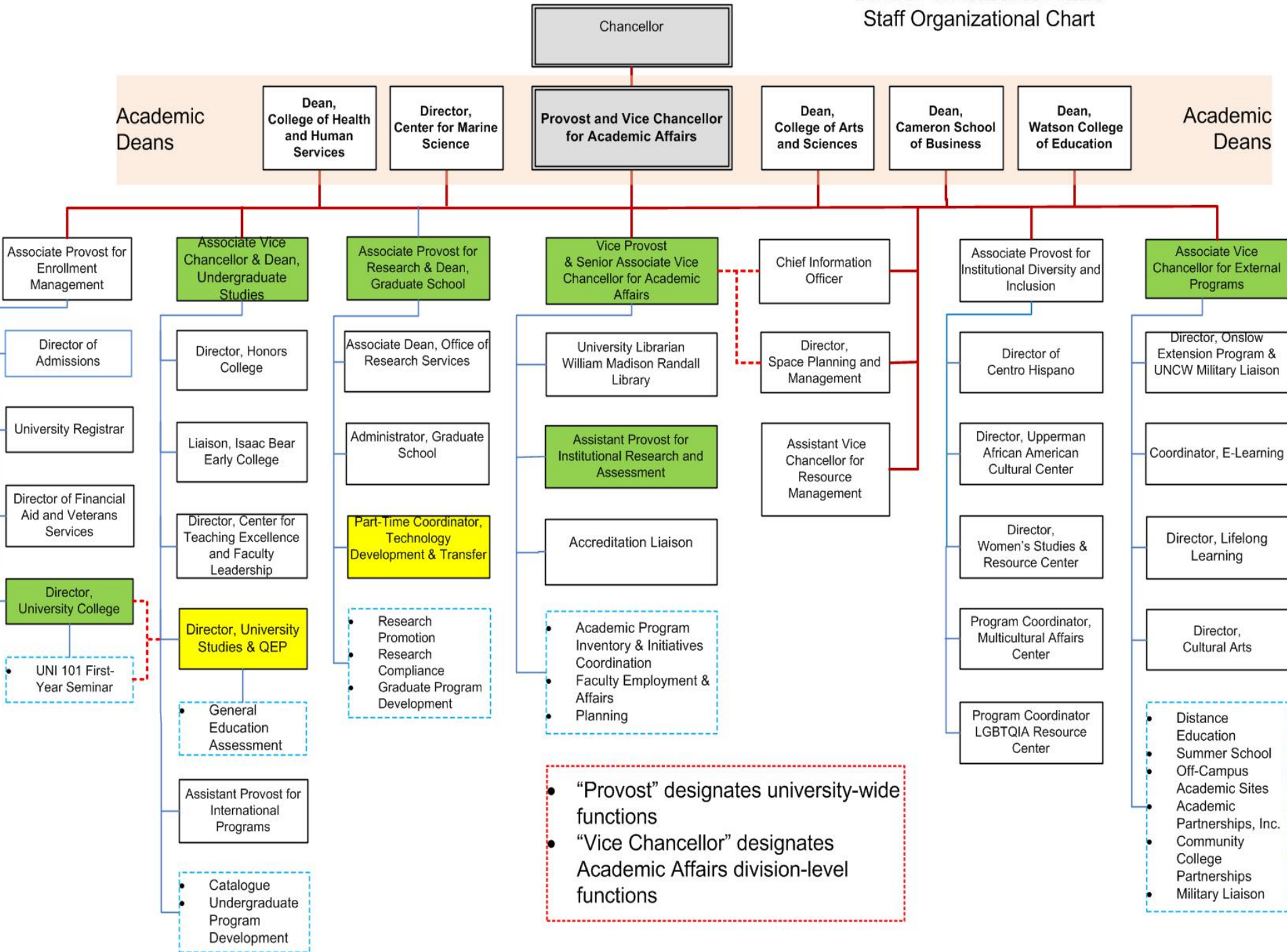
Kathy McDaniel
Program Coordinator

Aims of enhanced structure

- **Strengthen our focus on undergraduate education**
- **Acknowledge the importance of research and scholarly endeavor**
- **Establish more focused and coherent portfolios of responsibility for Academic Affairs personnel**
- **Implement a forward-looking structure that positions the division to respond to current and emerging needs and initiatives**
- **Enhance the overall effectiveness, efficiency and responsiveness of Academic Affairs**



Division of Academic Affairs Staff Organizational Chart



• “Provost” designates university-wide functions
 • “Vice Chancellor” designates Academic Affairs division-level functions