

Southeastern North Carolina Economic Conditions

February 24, 2014
Adult Scholars

William W. (Woody) Hall, Jr., Ph.D.
Professor of Economics and Senior Economist
H. David and Diane Swain Center for Business and Economic Services
Cameron School of Business
The University of North Carolina Wilmington
hall@uncw.edu



UNIVERSITY *of* NORTH CAROLINA WILMINGTON

Web Site for Slides

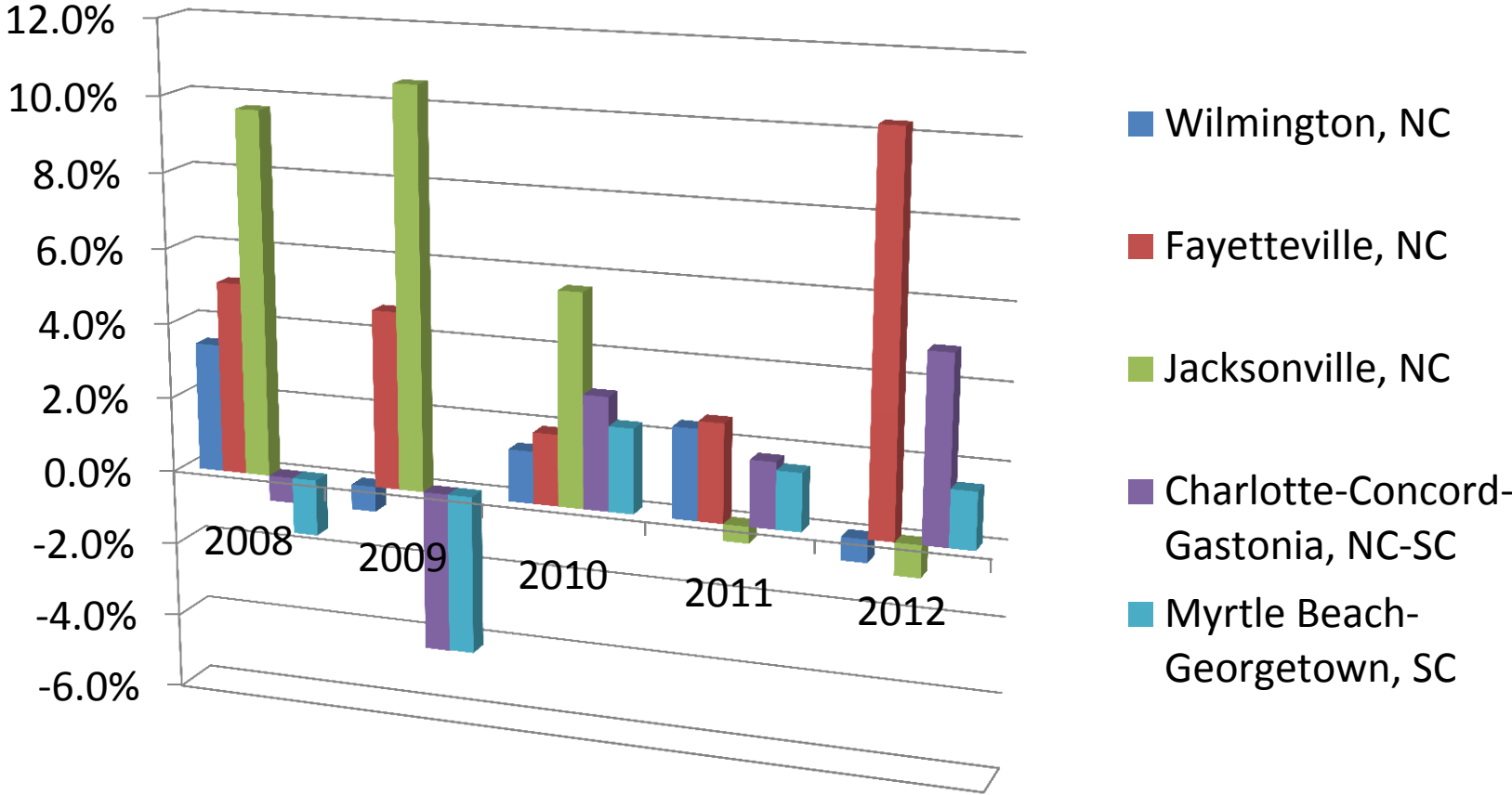
- <http://www.csb.uncw.edu/cbes/events/index.htm>

Median Family Income (\$ Current)

	1990	2000	1990-2000 Annual Compound Growth Rate (%)	2012	Percent of State	2000-2012 Annual Compound Growth Rate (%)
Brunswick County	\$23,480	\$35,888	4.4	\$46,490	100.1	2.2
New Hanover County	\$27,320	\$40,172	4.0	\$50,420	108.5	2.0
Pender County	\$23,270	\$35,902	4.5	\$44,071	94.9	1.8
North Carolina	\$26,647	\$39,184	4.0	\$46,450		1.5

Source: US Bureau of the Census.

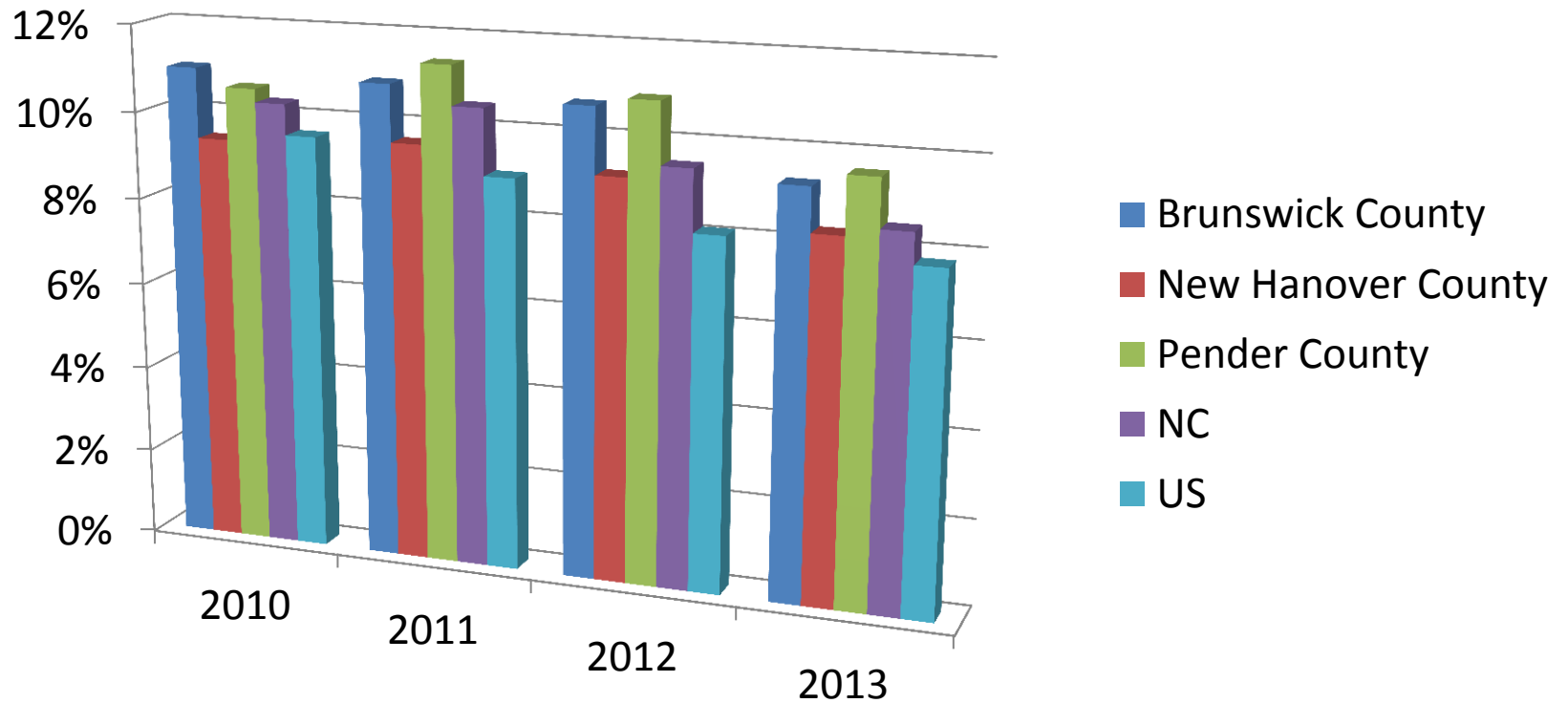
Metropolitan Statistical Area (MSA) Real Gross Domestic Product (GDP) Growth Rates



Source: Bureau of Economic Analysis, U.S. Department of Commerce.

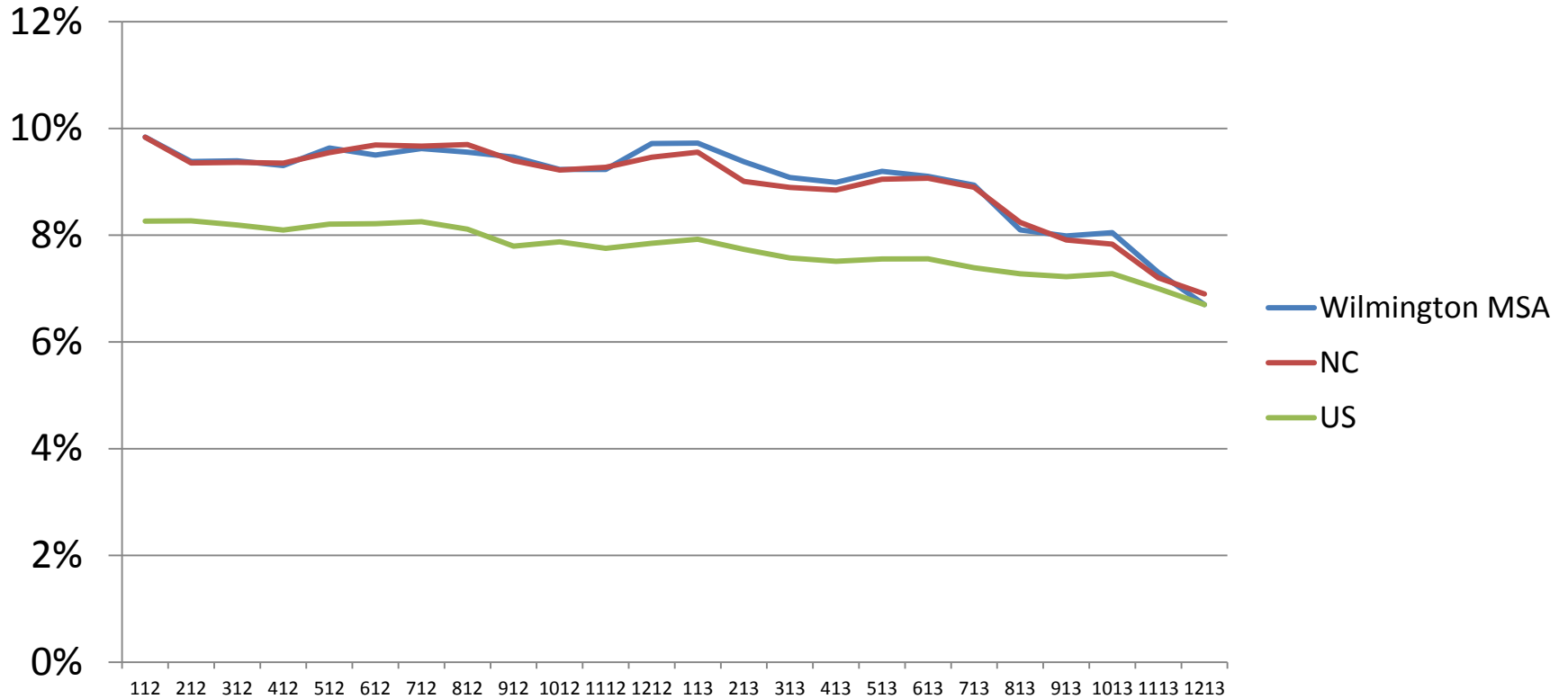


Unemployment Rates



Source: Division of Employment Security, NC Department of Commerce;
Bureau of Labor Statistics, US Department of Labor.

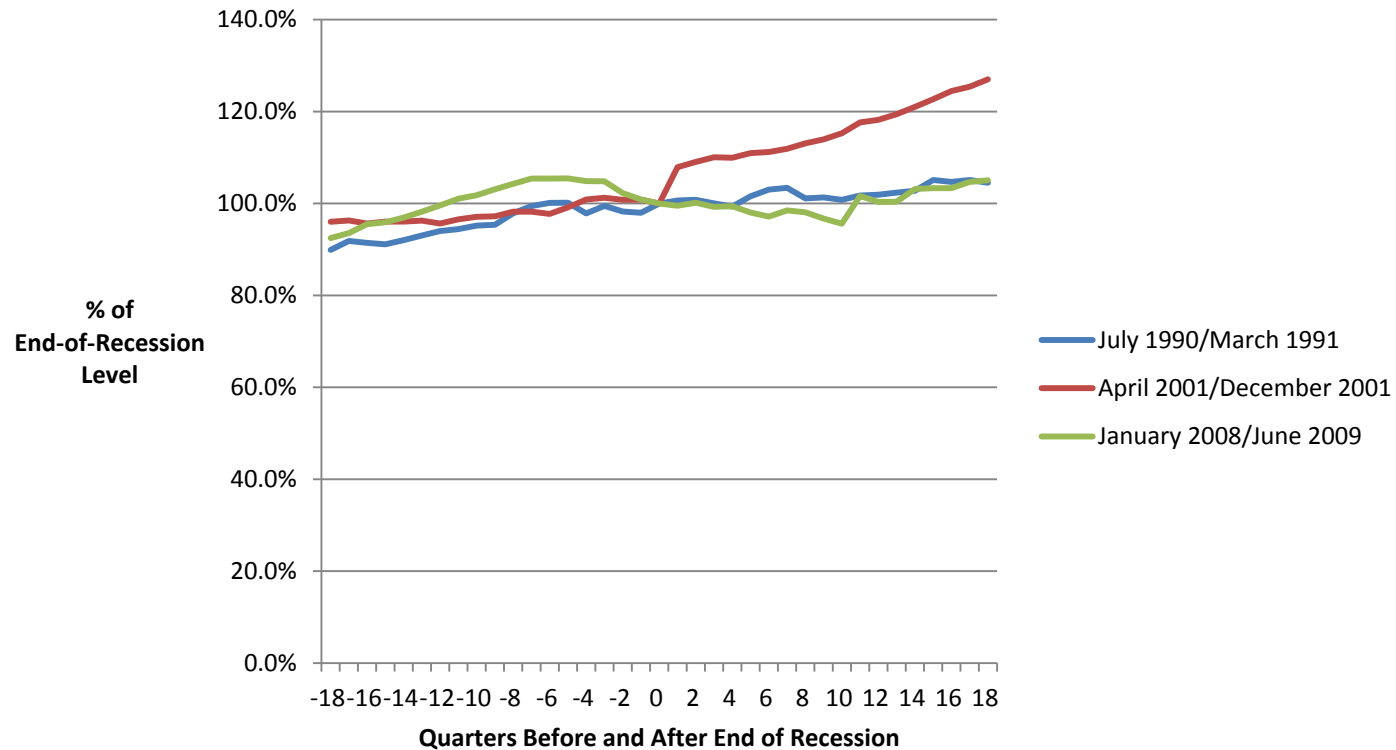
Unemployment Rates (Seasonally Adjusted)



Source: Division of Employment Security, NC Department of Commerce;
Bureau of Labor Statistics, US Department of Labor.



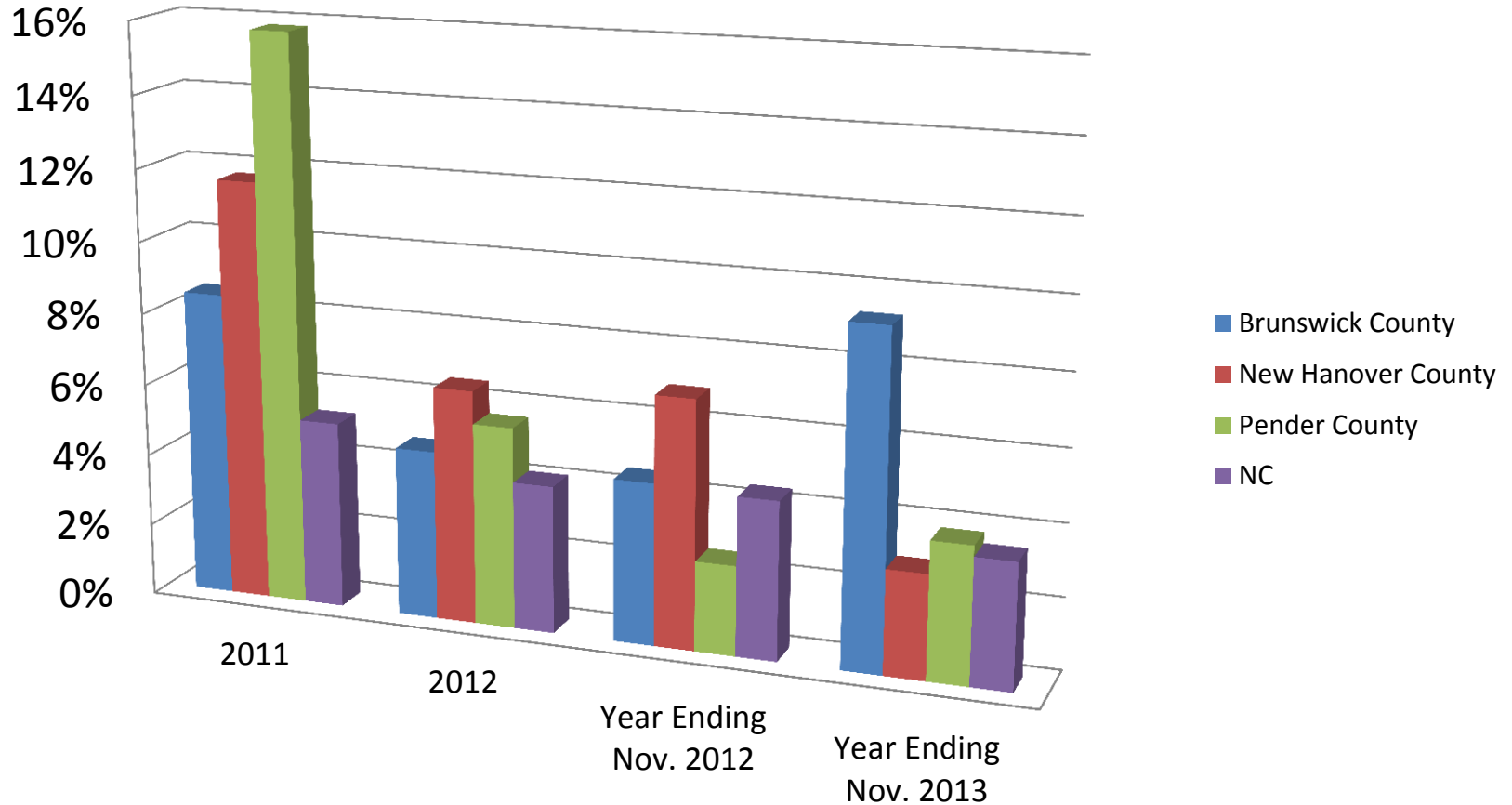
Wilmington MSA Employment “Spider” Chart (New Hanover and Pender Counties)



Source: Division of Employment Security Commission, NC Department of Commerce.



Retail Sales Growth Rates



Source: NC Department of Revenue.



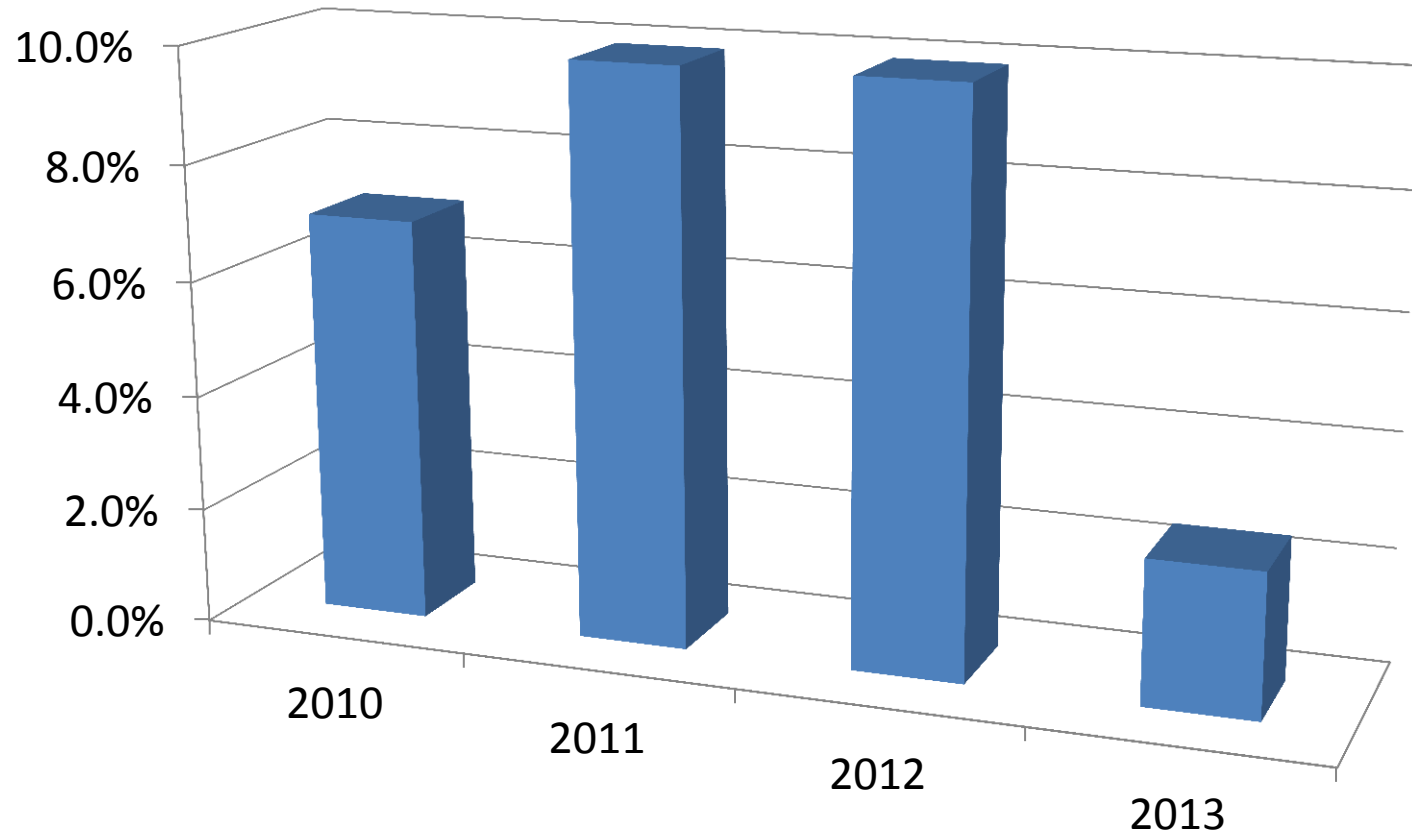
Tourism Expenditures (\$ Millions)

Area	2011	2012	% Change 2011-12	2012 Rank in State
Brunswick County	\$418.0	\$445.9	6.7	10
New Hanover County	\$425.8	\$460.0	8.0	9
Pender County	\$76.4	\$80.6	5.5	43
North Carolina	\$18,421.0	\$19,410.6	8.3	

Source: Division of Tourism, Film and Sports Development, NC Department of Commerce.

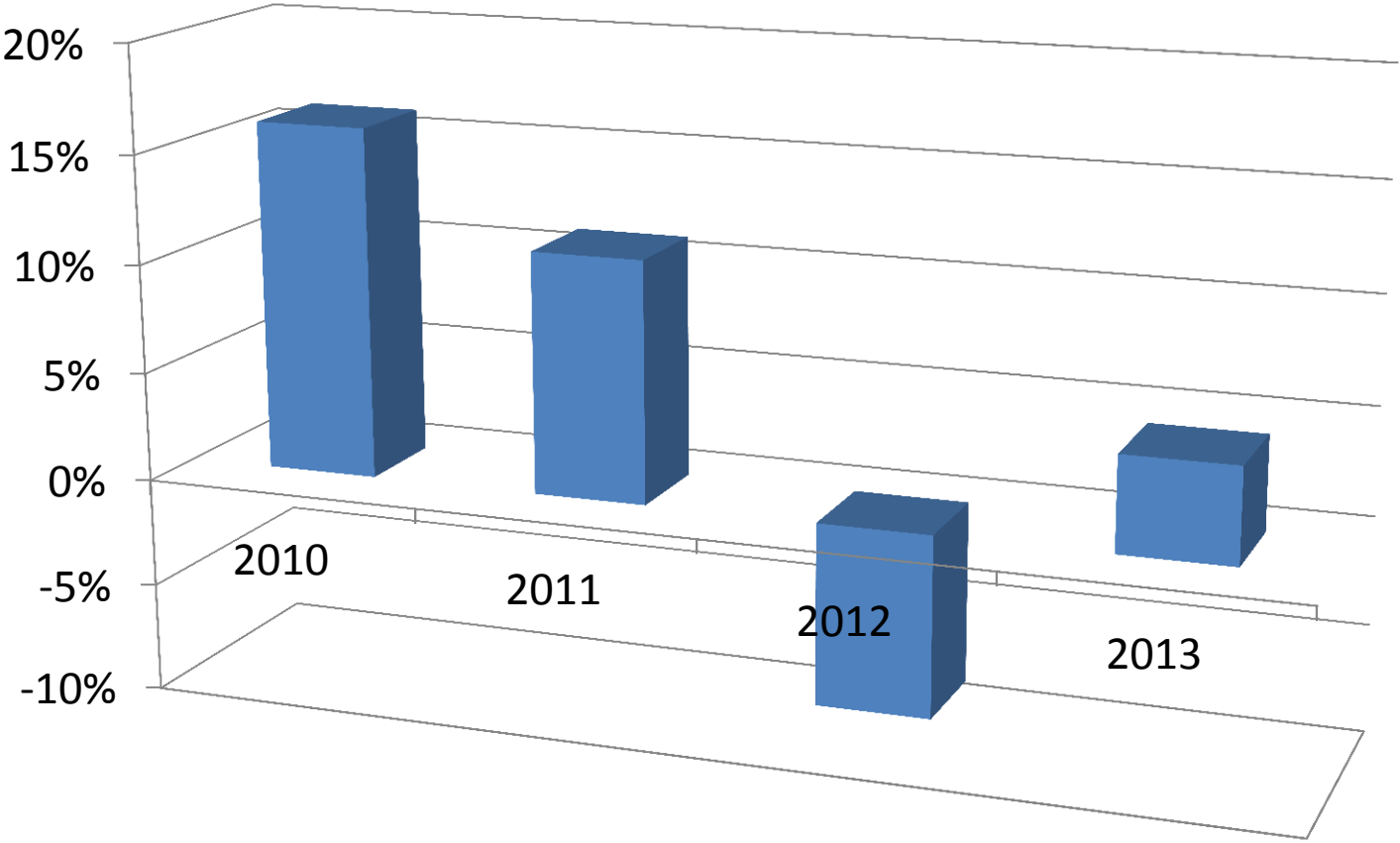


New Hanover County Room Tax Collections Growth Rates



Source: New Hanover County Manager's Office.

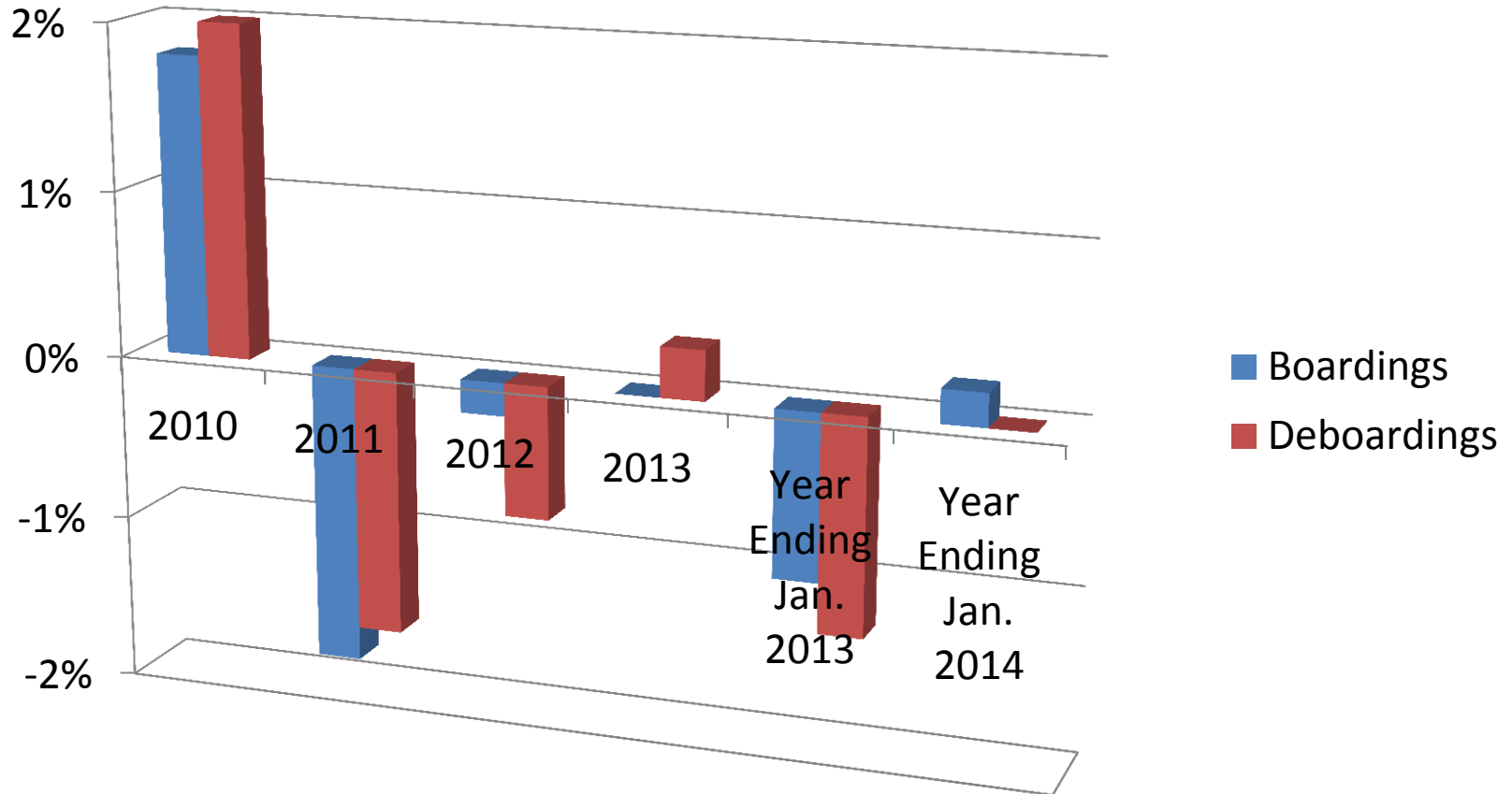
Port of Wilmington Container Tonnage Growth Rates



Source: NC State Ports Authority.

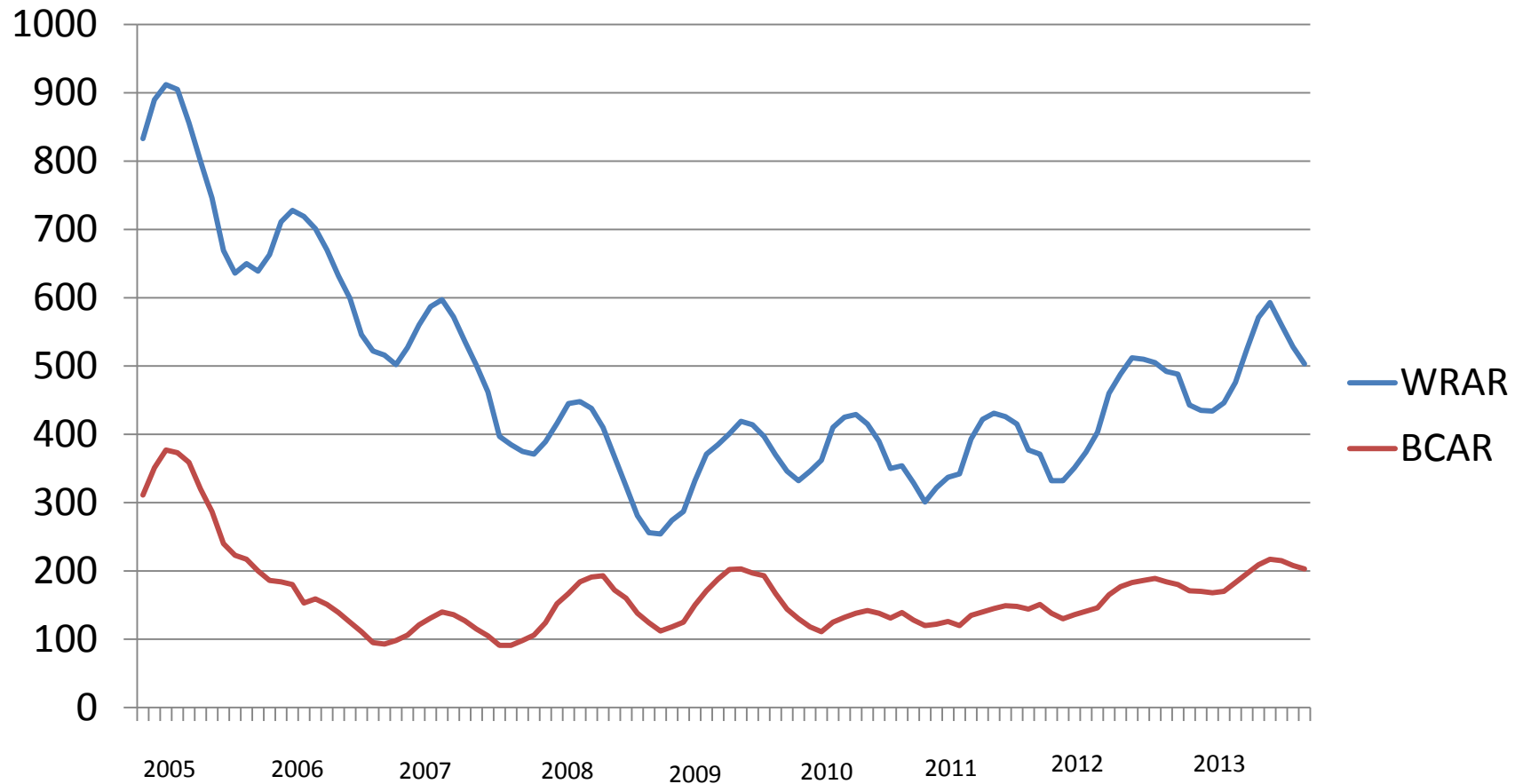


Wilmington International Airport Passenger Traffic Growth Rates



Source: Wilmington International Airport Manager's Office.

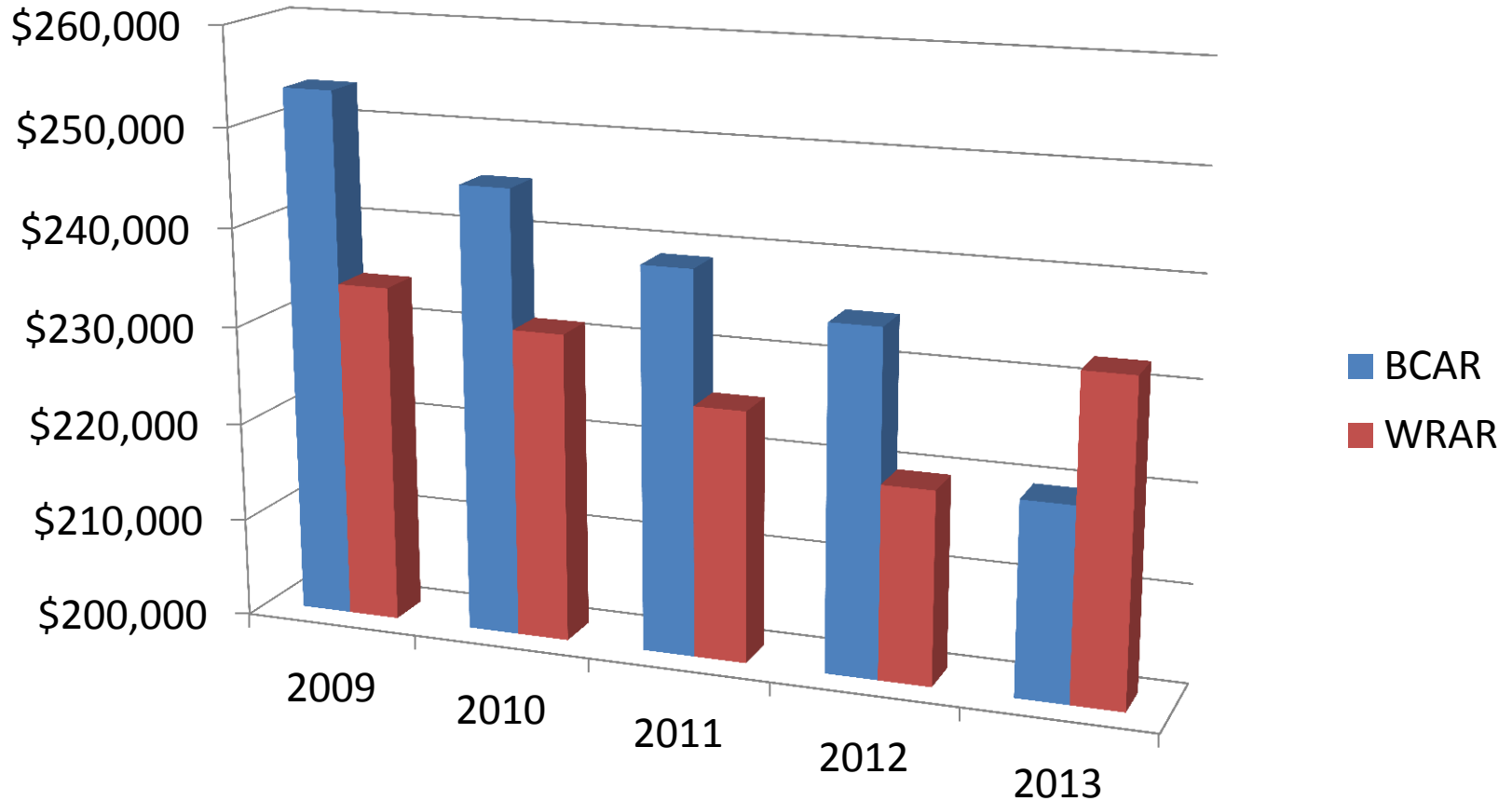
Existing Single-Family Home Sales (5-Month Centered Moving Average)



Source: NC Association of Realtors.

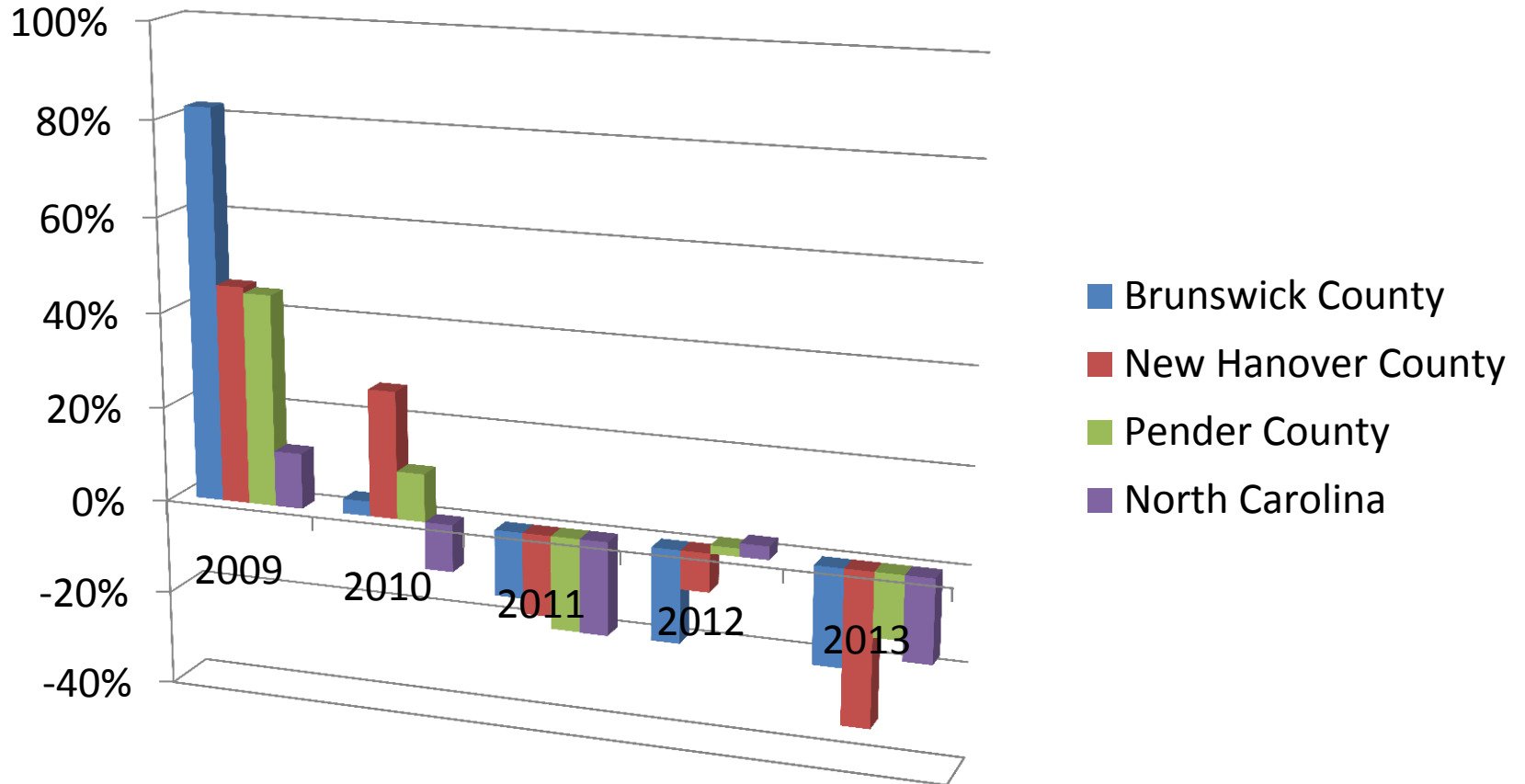


Average Monthly Sales Prices of Existing Single-Family Homes



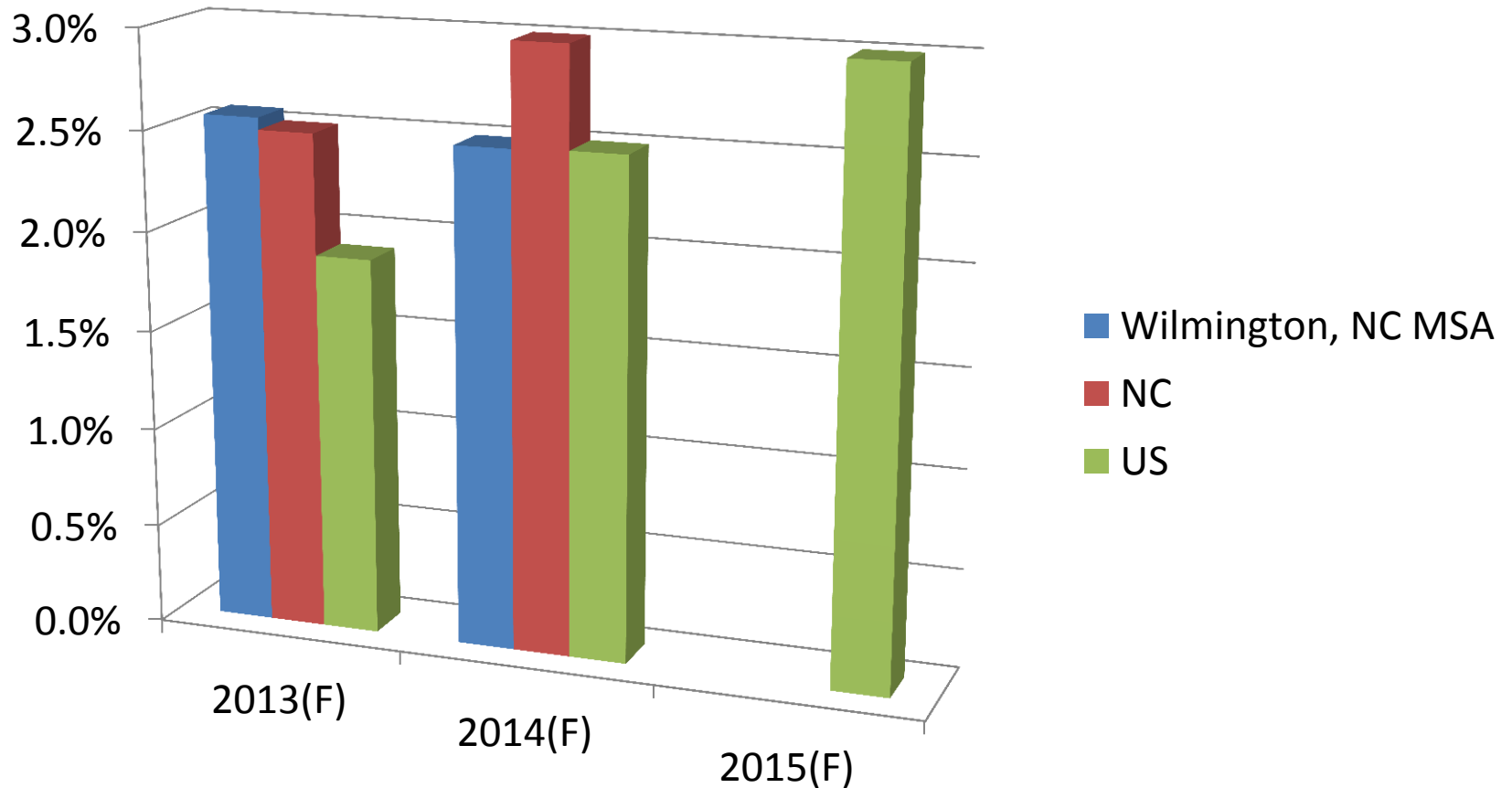
Source: NC Association of Realtors.

Foreclosure Growth Rates



Source: NC Administrative Office of the Courts.


Real GSP Growth Rates



Source: Ravija Badarinathi and William W. Hall, Jr. for the Swain Center for Business and Economic Services, Cameron School of Business, UNC Wilmington; "Babson Capital/UNC Charlotte Economic Forecast," January 15, 2014; "Weekly Economic & Financial Commentary," Economics Group, Wells Fargo Securities, February 14, 2014.


Quarterly Barometer

<http://www.csb.uncw.edu/cbes/newsletter/index.htm>



CAMERON SCHOOL OF BUSINESS
H. DAVID AND DIANE SWAIN CENTER FOR BUSINESS AND ECONOMIC SERVICES

Economic Barometer



Volume V, Issue 4 January 2014

INSIDE THIS ISSUE:

- The US Economy 1
- Growth in GDP 1
- Labor Market 1
- Aggregate Demand 2
- Stock Market 3
- Outlook 4
- The Local Economy 5
- Unemployment Rates 6
- Wilmington Employers 7
- Retail Sales Growth 8
- Port Container Tonnage 8
- Single-Family Home Sales 9
- Median Family Income 10

Recent Developments on the National Economy


Recent readings on the U.S. economy have generally been on the upbeat side. As shown in the table below, growth in real GDP broke out of the sluggish 2-percent pace that had characterized much of this recovery through the first half of 2013. It climbed to a 3- $\frac{1}{2}$ percent pace over the second half of last year. It is noteworthy that final demands for U.S. produced goods (final sales) were not as robust in 2013 as was production of final output, implying that build-ups in inventories played an important role in supporting growth in output and employment last year—adding about $\frac{1}{4}$ percentage points to output growth over the first three quarters of last year.

Growth in Real GDP (Percent change, annual rate)


	2012	2013		
		H1	Q3	Q4
Real GDP	2.0	1.8	4.1	3.2
Real Final Sales	2.5	1.2	2.5	

Labor Market. The December jobs report threw some cold water on the emberance that had been building on the outlook, as employment grew only 74,000 during the month in contrast to the more than 210,000 monthly pace over the previous four months. However, this would appear to be an “air pocket” and not a sustained slowdown. The chart below illustrates that initial claims for unemployment insurance have fallen to levels that have, in the past, been associated with solid and sustained gains in payrolls.

Initial Claims (ICSA)
Source: U.S. Department of Labor: Employment and Training Administration

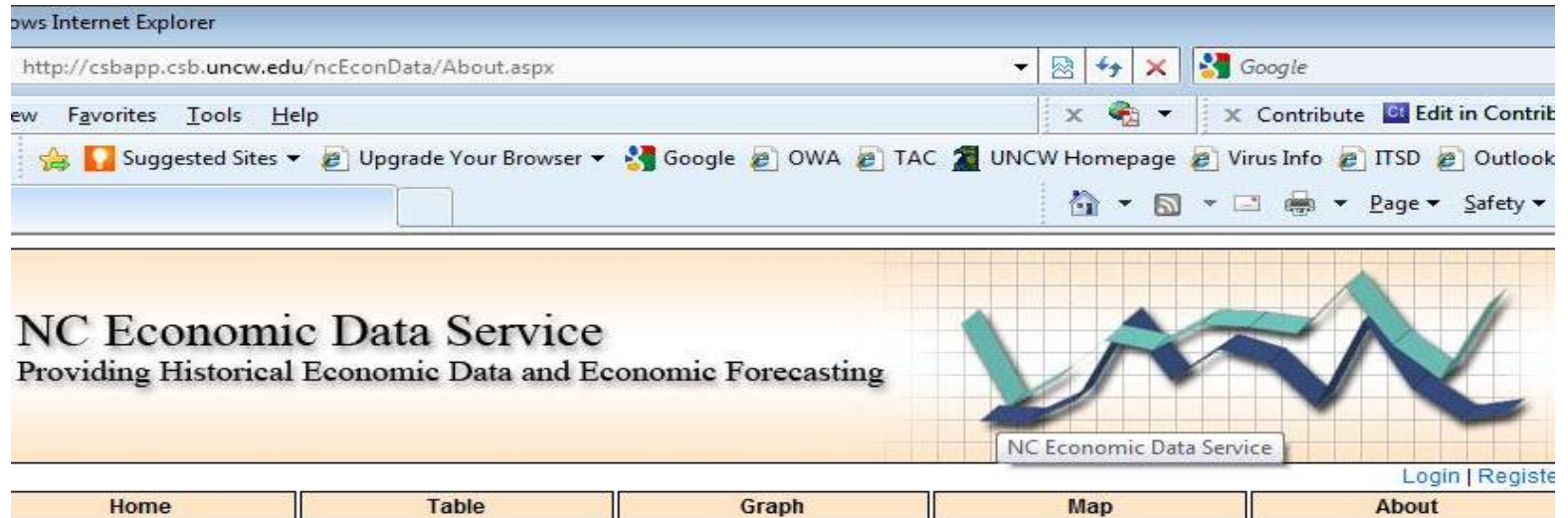


Learn about our benefactors, H. David and Diane Swain at www.csb.uncw.edu/swaincenter

FRED  Shaded areas indicate US recessions. 2014 research.stlouisfed.org

Online Data

<http://csbapp.csb.uncw.edu/ncecondata>



The screenshot shows a Microsoft Internet Explorer browser window displaying the NC Economic Data Service website. The address bar shows the URL <http://csbapp.csb.uncw.edu/ncecondata/About.aspx>. The browser's menu bar includes File, Favorites, Tools, and Help. The toolbar contains various icons for suggested sites, browser upgrades, and search engines like Google, OWA, TAC, and UNCW Homepage. The main content area features the text "NC Economic Data Service" and "Providing Historical Economic Data and Economic Forecasting" next to a 3D line graph. A navigation bar at the bottom contains buttons for Home, Table, Graph, Map, and About, along with links for Login and Register.

About The Site

UNCW's Economic Web Service provides twenty years of historical economic data for the southeastern United States. This publicly available data is presented in tables and graphs that can be searched and sorted by specific parameters. It also features a back-end system for administrators to record new data and manipulate old data. The goal of this service is to develop economic models based on historical and emerging trends using accepted forecasting procedures. Government agencies and businesses will then have the capability to use these models to forecast future economic growth for a particular region or industry.

Funding and support for this website comes from Progress Energy and the Center for Business and Economic Services at the University of North Carolina Wilmington. All economic data and analysis was collected and analyzed by Senior Economist Woody Hall. Website design and development supported by Dr. Tom Janicki, Information Systems Department and Josh Tobey, Masters Student in Computer Science and Information Systems at UNCW.