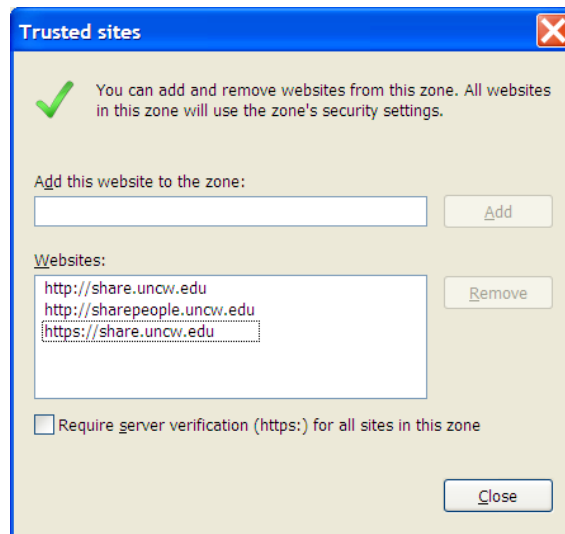
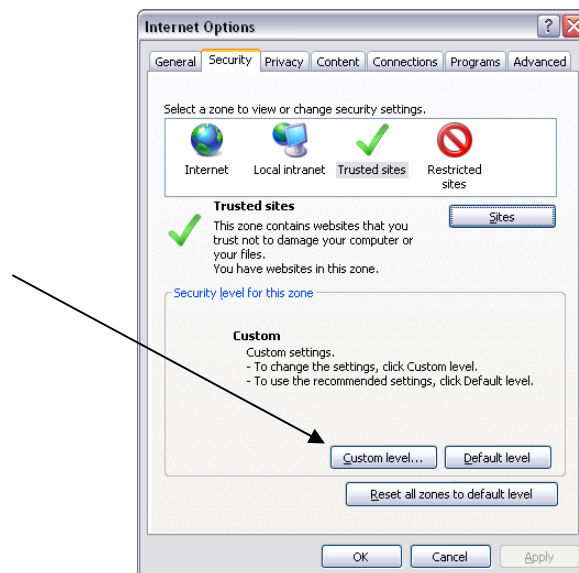


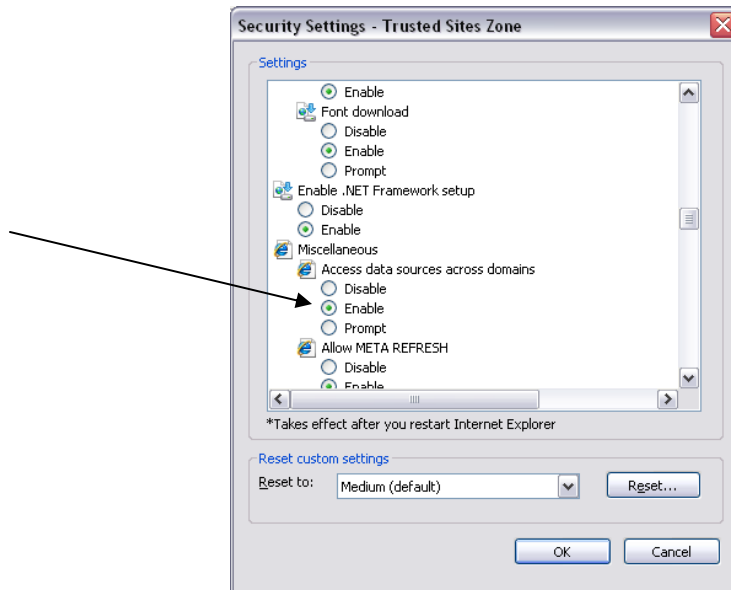
1. Open **Internet Explorer**
2. Go to **Tools, Internet Options**
3. Click on the **Security** tab and highlight **Trusted Sites** then select **Sites**. Add in all of the below sites:



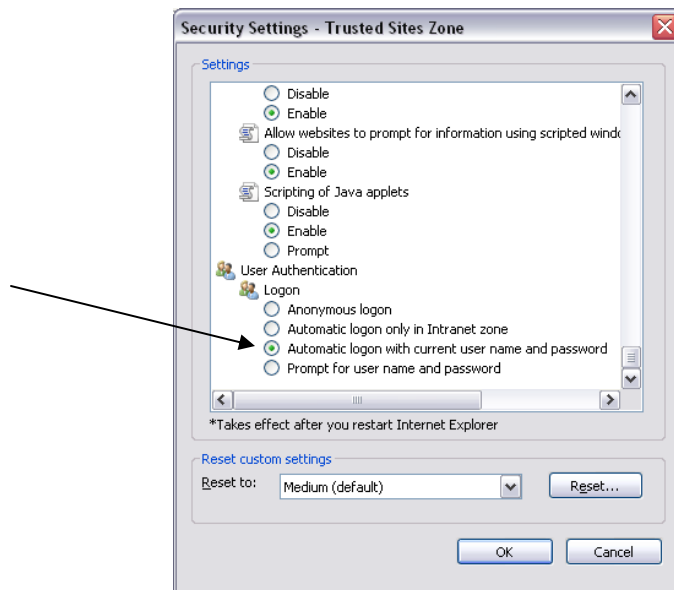
4. Click to **Close** Trusted Sites
5. Now click on **Custom Level** under "Security level for this zone"



6. About halfway down, under **MISCELLANEOUS**, Enable **Access data sources across domains**



7. Now scroll to the **User Authentication** section. Select **Automatic logon with current user name and password**



8. Click **OK** to close and you're done!