

**THE UNIVERSITY OF NORTH CAROLINA  
Request for Authorization to Establish a New Degree Program**

*INSTRUCTIONS: Please submit five copies of the proposal to the Senior Vice President for Academic Affairs, UNC Office of the President. Each proposal should include an executive summary. The signature of the Chancellor is required.*

Date November 20, 2006

**Constituent Institution:** The University of North Carolina at Wilmington

CIP Discipline Specialty Title: Sociology and Criminology

CIP Discipline Specialty Number: 45.1101 Level: B  M  1<sup>st</sup> Prof  D

Exact Title of Proposed Program: Masters of Arts in Criminology and Public Sociology

Exact Degree Abbreviation (e.g. B.S., B.A., M.A., M.S., Ed.D., Ph.D.): M.A.

Does the proposed program constitute a substantive change as defined by SACS? Yes  No

a) Is it at a more advanced level than those previously authorized? Yes  No

b) Is the proposed program in a new discipline division? Yes  No

Proposed date to establish degree program (allow at least 3-6 months for proposal review):

month August year 2007

Do you plan to offer the proposed program away from campus *during the first year of operation*?

Yes  No

If so, complete the form to be used to request establishment of a distance learning program and submit it along with this request.

## TABLE OF CONTENTS

Title Page .....	1
Table of Contents .....	2
Executive Summary .....	3
I. Description of the Program .....	4
II. Justification for the Program .....	5
III. Program Requirements and Curriculum .....	12
IV. Faculty .....	19
V. Library .....	21
VI. Facilities and Equipment .....	22
VII. Administration .....	24
VIII. Accreditation .....	26
IX. Supporting Fields .....	26
X. Additional Information .....	26
XI. Budget .....	26
XII. Evaluation Plans .....	31
XIII. Reporting Requirements .....	33
Appendices:	
A – List of Advisory Board Members and Affiliations .....	34
B – Sociology and Criminal Justice Graduate Faculty Vitae .....	35

## **Executive Summary**

UNCW requests authorization to establish a new graduate degree program in Criminology and Public Sociology. Increasingly, non-academic employers (chiefly policy makers, managers, planners and executives with responsibilities for a large variety of social, service, commercial, public and private agencies, programs and businesses) are becoming aware of the need for social science skills and for specific reliable information that they can use to assess policy, plan, pre-test, monitor and evaluate their efforts. Since many of the issues they confront are social in origin, current status or consequence, it is clear to them that in order to respond appropriately, they require highly relevant and necessary information, knowledge and social science skills that can contribute to making and carrying out effective decisions.

Recent developments in the social sciences, especially along methodological lines, have led to the emergence of a body of knowledge and skills bearing on decision-making and implementation. The theoretical and methodological developments in the social sciences can be made available to fill the acute need for professional skills that apply information to specific problems. In recent years the Sociology and Criminal Justice department has been approached by a variety of organizations with requests for competent MA professionals who can fill positions in applied social science and criminal justice areas, in the management of research, and in research related executive positions. In addition, master's-level enrollments and degrees in the social sciences nationally have increased markedly over the past ten years. Likewise, the desire for skills-based courses that develop students for careers as master's-level sociologists is increasing nationally. The department responds to this need by providing an MA program to educate graduate students who will work as professionals in non-academic applied settings as researchers, counselors, planners, managers, team members, volunteers, program directors, board members, and policy makers in public and private agencies, in marketing, media and not-for-profit management, that have use for the social science components of knowledge, information and skills.

One of the main objectives of the MA program will be to provide students with professional training to seek employment in federal, state, and local governmental agencies and in private-sector organizations, rather than seeking employment in strictly academic settings. The program will provide students training in both theory and methods as well as provide opportunities for them to apply both theory and methods in a variety of settings that deal with particular substantive areas. These areas will reflect the variety and depth of the department's faculty interests including family, demography, minority studies, drugs, crime mapping, rural services, social policy, mental health, education, criminology, legal studies, poverty and criminal justice policy.

The program requires the completion of 33 credit hours of graduate level course work and is designed to be completed in four semesters of full-time study. Required courses: 15 credit hours of methods, data analysis, theory; Elective courses: 12 credit hours; Thesis or internship: 6 credit hours. UNCW proposes to offer this program beginning in Fall 2007.

## **I. DESCRIPTION OF THE PROGRAM**

### **A. Describe the proposed degree program (i.e., its nature, scope, and intended audience).**

The proposed MA in Criminology and Public Sociology encompasses rigorous analyses of the values, assumptions, and social structures within national and global societies. The MA in Criminology and Public Sociology at UNCW assists and advises potential students to gain significant insights into these social processes and structures in their desired professions.

The purpose of the masters program is to train students to use theoretical and methodological tools that will allow them to acquire and apply specific information to particular problems or to improve the quality of life. Students will have the opportunity to challenge themselves and others in unique and realistic ways.

MA students will be able to concentrate in either criminology or public sociology. In either case, graduates of the program will be able to tackle professional tasks that directly or indirectly involve human relationships. We expect our graduates to move on to careers as evaluators, researchers, counselors, volunteers, planners, managers, advisors, program directors, and policy makers. The program will also provide a strong foundation for those who seek to pursue the Ph.D. in traditional criminology and sociology programs.

One of the strengths of the new program is the diverse theoretical, methodological, and substantive interests of the graduate faculty. For example, within public sociology, specific strengths include the study of rural and urban poverty, race-gender class inequalities and stratification, social structure and organizational power, globalization, and culture and media. Theoretical-methodological perspectives represented include both quantitative and qualitative, as well as critical, feminist, and conflict theories. Within criminology, specific strengths include not only traditional criminal justice studies, but theoretical criminology including critical criminological theory, and social justice including restorative justice. Students will work with the faculty to develop an individualized program of study. The program requires the completion of 33 credit hours of graduate level course work and is designed to be completed in four semester of full-time study. Required courses: 15 credit hours of methods, data analysis, theory; Elective courses: 12 credit hours; Thesis or internship: 6 credit hours.

### **B. List the education objectives of the program.**

The educational objectives of the master's program are:

- To prepare students for professional and/or academic careers in Sociology, Criminal Justice and Criminology
- To strengthen students' analytical, research and writing skills
- To provide extended training in theory and methods
- To strengthen students' ability to apply theories and methods to social issues, problems and policies

- To provide students opportunities to work with community organizations and leaders in internship settings gaining hands-on knowledge and application of social science research methods and practice

**C. Describe the relationship of the program to other programs currently offered at the proposing institution, including the common use of: (1) courses, (2) faculty, (3) facilities, and (4) other resources.**

Some graduate courses will be cross-listed to encourage enrollment by advanced undergraduate Public Sociology and Criminal Justice students, especially those who may wish to complete this or some other graduate-level program. Students in other graduate programs such as the Masters of Social Work and Masters in Public Administration, may seek to take courses from the proposed MA program.

Faculty teaching in the proposed program will come from the undergraduate program in Sociology and Criminal Justice (College of Arts and Sciences).

## **II. JUSTIFICATION FOR THE PROGRAM**

**A. Describe the proposed program as it relates to:**

**1. The institutional mission and strategic plan**

The proposed MA in Criminology and Public Sociology will enhance UNCW's mission, goals, and objectives. According to the strategic vision, "UNCW will promote and engage in high-quality scholarship and in master's-focused graduate education." Furthermore, UNCW is devoted to student development in terms of personal and professional aspirations. We are committed to providing students enrolled in our MA program with the cutting edge disciplinary skills and tools to take back into their communities, their employment, and their families as well-rounded, professionally trained social scientists. They will be encouraged to develop observation and analytical skills. Graduates of our MA program will have significant advantages for their career aspirations, whether they stay in this geographical region or move beyond southeastern North Carolina. UNCW values highly our commitment to regional engagement. This MA in Criminology and Public Sociology specifically requires graduate students to take on internships, and it is expected that most of them will be employed in the New Hanover metropolitan area (New Hanover, Pender and Brunswick counties).

Southeastern North Carolina is predominantly rural, with high rates of poverty, living wage concerns, job displacement and problems with affordable housing. The strengths of the faculty in the MA program focus on inequality (race, class, gender, ability), community development and engagement and our courses will reflect these areas of faculty expertise. Emphasis will be placed on regional internships which address these longstanding social problems in the region and state. The region will benefit from the application of students' theoretical and methodological skills to that work. Thus, our program will directly enhance Goal V ("strengthen the university's regional engagement and outreach activities"), and specifically relate to Objectives 2 (provide services to and collaborate with our P-16 educational partners in public schools, community colleges and other universities) and 8

(enhance the university's ability to perform larger scale multi-disciplinary applied research programs that focus on issues important to southeastern North Carolina).

## **2. Student demand**

The initial target market for this program will be undergraduate Sociology and Criminal Justice graduates and local professionals currently working in the criminal justice and social sciences fields. To date, more than 30 inquiries about the proposed program have been fielded by our department over the past six months, primarily through word-of-mouth networking. In 2004, the Department of Sociology and Criminal Justice was awarded Council Of Graduate Schools (CGS) and Ford Foundation funding to develop and plan a professional master's degree program in the social sciences. Using these funds, the department conducted a survey to assess the need for such a program and found that 77% of employers surveyed in the region indicated the need for professional master's trained graduates; 92% of alumni surveyed believed the program was needed. We believe there is a strong demand for the proposed program and that the program will attract students from the region, as well as nationally.

## **3. Societal need (For graduate, first professional, and baccalaureate professional programs, cite manpower needs in North Carolina and elsewhere.)**

Increasingly, non-academic employers (chiefly policy makers, managers, planners and executives with responsibilities for a large variety of social, service, commercial, public and private agencies, programs and businesses) are becoming aware of the need for social science skills and for specific reliable information that they can use to assess policy, plan, pre-test, monitor and evaluate their efforts. Since many of the issues they confront are social in origin, current status, or consequence, it is clear to them that in order to respond appropriately, they require highly relevant and necessary information, knowledge and social science skills that can contribute to making and carrying out effective decisions.

Recent developments in the social sciences, especially along methodological lines, have led to the emergence of a body of knowledge and skills bearing on decision-making and implementation. The theoretical and methodological developments in the social sciences can be made available to fill the acute need for professional skills that apply information to specific problems. In recent years the Sociology and Criminal Justice department has been approached by a variety of organizations with requests for competent MA professionals who can fill positions in applied social science and criminal justice areas, in the management of research, and in research related executive positions. In addition, master's-level enrollments and degrees in the social sciences nationally have increased markedly over the past ten years. Likewise, the desire for skills-based courses that develop students for careers as master's-level sociologists is increasing nationally. The department responds to this need by providing an MA program to educate graduate students who will work as professionals in non-academic applied settings as researchers, counselors, planners, managers, team members, volunteers, program directors, board members, and policy makers in public and private agencies, in

marketing, media and not-for-profit management, that have use for the social science components of knowledge, information and skills. Furthermore, in a recent research report produced by the American Sociological Association Research and Development Department (Spalter-Roth 2006), findings indicate that few students graduating from traditional graduate social science curricula felt they had the skills to work in non-academic careers such as those found in non-profits, consulting work, or government – a clear mismatch between the types of jobs available to MA-level graduates and the skills MA students receive in traditional sociological MA programs. We believe that the program we have created will address this mismatch between the traditional sociology and criminology curricula and the professional social science curricula which emphasizes applied experiences in professional settings, and social science skills development.

**4. Impact on existing undergraduate and/or graduate academic programs of your institution. (e.g., Will the proposed program strengthen other programs? Will it stretch existing resources? How many of your programs at this level currently fail to meet Board of Governors’ productivity criteria? Is there a danger of proliferation of low-productivity degree programs at the institution?)**

The mission statement of the Department of Sociology and Criminal Justice is to:

- provide quality undergraduate liberal arts education for its students;
- producing new knowledge through scholarship and research;
- and perform service to its profession, the university, and community.

As an academic unit within the College of Arts and Science, the primary department goal is the creation and transmission of knowledge through its two social science disciplines, sociology and criminal justice. To this end, the department's programs provide curricula that encourage critical thinking, intellectual curiosity, and an understanding of the social science perspective. Through various and innovative instructional modes, including technologically enhanced and web-based courses, individualized instructions, interdisciplinary curricula, distance learning, internships, and practice, the department seeks to fulfill the university's commitment to providing a quality learning experience for its students. Excellence in scholarship and research is also viewed as essential to providing an effective and meaningful educational environment. Performing service to the region from the special perspective of sociology and criminal justice and providing students with the professional training necessary for success in applied settings is also a basic department responsibility. The department seeks to increase knowledge of human society from a global perspective and to enhance understanding of the various multicultural segments of American Society.

The Department of Sociology and Criminal Justice currently offers a Bachelor of Arts degree in Sociology and in Criminal Justice. Both programs offer internships and applied settings. The department offers a Public Sociology track that emphasizes community based participatory research. Public Sociology involves taking sociology beyond the boundaries of the university: it is a sociology that “seeks to bring sociology to publics beyond the academy, promoting dialogue about issues that affect the fate of society” (Burawoy 2004). In the

Public Sociology Program, students learn how to use sociology to inform real life social issues. The proposed professional master's degree will expand on the undergraduate program focusing on internship placement in the community to apply social science skills in relevant professional settings. The 33 hour master's program includes a six hour internship placement. While the proposed program will provide an opportunity for advanced education at the master's level, it will also serve to strengthen both undergraduate programs in Criminal Justice and Sociology. Graduate teaching assistants will be utilized to provide instructional support for the undergraduate program. The MA program will attract more and better faculty to UNCW as well as additional resources which will be leveraged by undergraduate and graduate programs alike. In addition, two current faculty members serve on two separate national Task Forces for the American Sociological Association (ASA), the professional organization for Sociologists. Dr. Kim Cook, Chair of the Department of Sociology and Criminal Justice, has just been appointed to a two-year term on the ASA Task Force on Sociology and Criminology programs. Dr. Leslie Hossfeld, Co-Director of the proposed MA in Criminology and Public Sociology, was appointed by the American Sociological Association (ASA) Council to Co-Chair the national ASA Taskforce on Institutionalizing Public Sociology. The expertise offered by these two faculty members in their respective areas will guide the MA program and bring national attention to the proposed MA program and the university.

Other departments that offer courses that may be taken by students in the proposed degree program, include the Masters of Public Administration program and the Masters of Social Work program that would overlap with the applied professional features of our proposed master's program. Specifically, we seek to offer MSW course Social Policy and Service Organizations; and two MPA courses: Issues in Non-Profit Management and Resources Development in Non-Profit Organizations. This will strengthen our program by providing policy and non-profit organizational expertise that our students will use in their professional careers. These will not be unduly impacted by the program given they are all elective courses and not required.

There is little danger of the creation of low-productivity graduate programs at UNCW. In the 2001 biennial Review of Academic Degree Program Productivity, only the M.S./M.A. in Mathematics and the M.S. in Chemistry were identified as low-productivity programs. Both have increased enrollments and graduation rates and are no longer so classified. In the 2003 Review of Academic Degree Program Productivity, the M.Ed. in Middle Grades Education and the M.Ed. in Special Education, along with the M.A.T. degrees programs were classified as low-productivity. The M.Ed. degree program at UNCW has numerous specialty areas. The M.Ed. program, as a whole, is quite healthy and vigorous. Enrollment in subspecialties varies each year. The M.A.T. program was reconstituted and restarted only three years ago and it has reached high productivity levels in the short amount of time. We believe that the MA in Criminology and Public Sociology will be extremely attractive to prospective students and will immediately have high enrollments and will sustain high enrollments through subsequent years.

**B. Discuss potential program duplication and program competitiveness**

- 1. Identify similar programs offered elsewhere in North Carolina. Indicate the location and distance from UNCW. Include a) public and b) private institutions of higher education.**

**a) public institutions**

<u>Degree</u>	<u>Area</u>	<u>Distance</u>	<u>Institution</u>	<u>Location</u>
MA	Sociology	120 miles	ECU	On-campus
MS	Criminal Justice	120 miles	ECU	On-campus
MA	Sociology	165 miles	NC Central	On-campus
MA/MS	Sociology	130 miles	NCSU	On-campus
MA	Sociology	196 miles	UNC-CH	On-campus
MS	Criminal Justice	196 miles	UNC- CH	On-campus
MA	Sociology	208 miles	UNC-G	On-campus
MA	Sociology	88 miles	Fayetteville State	On-campus
MS	Criminal Justice	88 miles	Fayetteville State	On-campus
MA	Sociology	160 miles	UNC	On-campus

**b) private institutions**

<u>Degree</u>	<u>Area</u>	<u>Distance</u>	<u>Institution</u>	<u>Location</u>
MA	Sociology	165 miles	Duke	On-campus
MJA	Justice Administration	88 miles	Methodist	On-campus

- 2. Indicate how the proposed new degree program differs from other programs like it in the University. If the program duplicates other UNC programs, explain a) why is it necessary or justified and b) why demand (if limited) might not be met through a collaborative arrangement (perhaps using distance education). If the program is a first professional or doctoral degree, compare it with other similar programs in public and private universities in North Carolina, in the region, and in the nation.**

There are no public or private institutions of higher education in North Carolina currently offering a program in Criminology and Public Sociology. This program is unique in its focus on professional skill development and is unlike any in the state and nationally.

**C. Enrollment (baccalaureate programs should include only upper division majors, juniors, and seniors).**

**Headcount enrollment**

Show a five-year history of enrollments and degrees awarded in similar programs offered at other UNC institutions (using the format below for each

institution with a similar program); indicate which of these institutions you consulted regarding their experience with student demand and (in the case of professional programs) job placement. Indicate how their experiences influenced your enrollment projections.

Program Title: **MA Sociology and MS Criminal Justice**

University	Data	Year				
		<u>2001</u>	<u>2002</u>	<u>2003</u>	<u>2004</u>	<u>2005</u>
<b><u>NC Central</u></b>	Fall Enrollment	<u>33</u>	<u>30</u>	<u>38</u>	<u>15</u>	<u>26</u>
	Degrees awarded	<u>NA</u>	<u>NA</u>	<u>NA</u>	<u>NA</u>	<u>NA</u>
<b><u>ECU – MA SOC</u></b>	Fall Enrollment	<u>28</u>	<u>25</u>	<u>21</u>	<u>25</u>	<u>22</u>
	Degrees awarded	<u>10</u>	<u>11</u>	<u>7</u>	<u>6</u>	<u>9</u>
<b><u>ECU – MS CRJ</u></b>	Fall Enrollment	<u>30</u>	<u>40</u>	<u>46</u>	<u>48</u>	<u>48</u>
	Degrees awarded		<u>5</u>	<u>8</u>	<u>7</u>	<u>8</u>
<b><u>NCSU</u></b>	Fall Enrollment	<u>25</u>	<u>41</u>	<u>45</u>	<u>24</u>	<u>43</u>
	Degrees awarded	<u>0</u>	<u>2</u>	<u>4</u>	<u>1</u>	<u>0</u>
<b><u>UNC-Charlotte MA SOC</u></b>	Fall Enrollment	<u>18</u>	<u>16</u>	<u>16</u>	<u>13</u>	<u>15</u>
	Degrees awarded	<u>4</u>	<u>4</u>	<u>8</u>	<u>3</u>	<u>4</u>
<b><u>UNC-Charlotte MS CRJ</u></b>	Fall Enrollment	<u>42</u>	<u>33</u>	<u>43</u>	<u>42</u>	<u>34</u>
	Degrees awarded	<u>2</u>	<u>10</u>	<u>6</u>	<u>4</u>	<u>11</u>
<b><u>Fayetteville State MA SOC</u></b>	Fall Enrollment	<u>6</u>	<u>9</u>	<u>16</u>	<u>18</u>	<u>NA</u>
	Degrees awarded	<u>10</u>	<u>2</u>	<u>3</u>	<u>1</u>	<u>NA</u>
<b><u>UNC-Chapel Hill</u></b>	Fall Enrollment	<u>72</u>	<u>82</u>	<u>85</u>	<u>87</u>	<u>84</u>
	Degrees awarded	<u>0</u>	<u>7</u>	<u>7</u>	<u>12</u>	<u>16</u>
<b><u>UNC – Greensboro</u></b>	Fall Enrollment	<u>24</u>	<u>20</u>	<u>21</u>	<u>23</u>	<u>28</u>
	Degrees awarded	<u>0</u>	<u>12</u>	<u>8</u>	<u>6</u>	<u>4</u>

Each of the institutions shown in the table was contacted to tabulate the enrollment information shown above. Based upon these numbers, discussions with department chairs at the respective institutions, and along with the anticipated student demand discussed in Section I, enrollment projections were developed for the proposed program.

Use the format in the chart below to project your enrollment in the proposed program for four years and explain the basis for the projections:

	Year 1 (2007-08)	Year 2 (2008-09)	Year 3 (2009-10)	Year 4 (2010-11)
Full-time	10	20	25	25
Part-time	5	5	5	5
<b>TOTALS</b>	<b>15</b>	<b>25</b>	<b>30</b>	<b>30</b>

Please indicate the anticipated steady-state headcount enrollment after four years:

Full-time   25        Part-time   5        Total   30  

SCH production (upper division program majors, juniors and seniors *only*, for baccalaureate programs). Use the format in the chart below to project the SCH production for four years. Explain how projections were derived from enrollment projections (see UNC website for a list of disciplines comprising each of the four categories).

Year 1: 2005-06	Student Credit Hours (SCH)		
Program Category	UG	Master's	Doctoral
Category I		230	
Category II			
Category III			
Category IV			

Year 2: 2006-07	Student Credit Hours (SCH)		
Program Category	UG	Master's	Doctoral
Category I		410	
Category II			
Category III			
Category IV			

Year 3: 2007-08:	Student Credit Hours (SCH)		
Program Category	UG	Master's	Doctoral
Category I		500	
Category II			
Category III			
Category IV			

<b>Year 4: 2008-09</b>	<b>Student Credit Hours (SCH)</b>		
<b>Program Category</b>	<b>UG</b>	<b>Master's</b>	<b>Doctoral</b>
Category I		500	
Category II			
Category III			
Category IV			

Assumptions on SCH calculation: (a) on average, each full-time student will enroll in 18 hours per year and (b) on average, each part-time student will enroll in one 10-credit course per year.

### **III. Program Requirements and Curriculum**

#### **A. Program Planning**

**1. List the names of institutions with similar offerings regarded as high quality programs by the developers of the proposed program.**

There are no public or private institutions in North Carolina with either a Master of Arts in Public Sociology or an MA in Criminology. Indeed, only one other program in the country, American University <http://www.american.edu/cas/sociology/maps/>, offers an MA with a concentration in Public Sociology; the program was launched Fall 2006, thus it may be too soon to assess its quality. The MA in Sociology program at UNC Greensboro has a Criminology concentration, and appears to be a program of fine quality. Appalachian State University has an MS degree in Criminal Justice and Criminology, but is too recently approved to assess its quality. In addition, North Carolina State University's masters and doctoral programs in sociology identifies crime, deviance, and social control as an area of emphasis. Outside of North Carolina, the following programs are similar to ours and are considered to be of high quality:

- University of Missouri-St. Louis ([www.umsl.edu/%7Eeccj/html\\_files/masters.html](http://www.umsl.edu/%7Eeccj/html_files/masters.html))
- University of Maryland (<http://www.ccjs.umd.edu/Graduate/>)
- Northern Arizona University (<http://www.nau.edu/~crimj-p/mscj.html>)
- University of Delaware (<http://www.udel.edu/soc/gradpage.htm>)
- University of Florida (<http://web.crim.ufl.edu/grad/ma.html>)

The Alfred P. Sloan Foundation has also recognized this need and has provided funding to more than 30 institutions to develop interdisciplinary graduate programs (<http://www.sciencemasters.com>) for students interested in a wider variety of career options than provided by current graduate programs. UNCW has received Sloan Foundation funding for the planning and establishment the proposed program in Criminology and Public Sociology.

**2. List other institutions visited or consulted in developing this proposal. Also list any consultants' reports, committee findings, and simulations (cost, enrollment**

**shift, induced course load matrix, etc.) generated in planning the proposed program.**

The MA Program planning committee in Sociology & Criminal Justice consulted with colleagues at the following universities: UNC Greensboro, Northern Arizona University, American University, Old Dominion University, North Carolina State University, American Sociological Association and Eastern Michigan University. Committee members attended a workshop for graduate program directors at the meeting of the American Sociological Association in August 2006 and received valuable information on program planning from the workshop sessions. In addition, the committee collected invaluable qualitative and quantitative feedback from the program's advisory board at a session held early in the planning process. A list of advisory board members may be found in Appendix A.

**B. Admission. List the following:**

**1. Admissions requirements for proposed program (indicate minimum requirements and general requirements).**

Each applicant must have a strong overall academic record and have successfully completed an undergraduate degree and have a 3.0 overall undergraduate GPA.

Admissions decisions are based upon the examination of several factors, and where other indicators of success warrant, individuals who fall below the established criteria may still be considered for admission. A writing sample is required, in the form of an essay explaining how the MA in Criminology and Public Sociology may assist the candidate in meeting her or his personal goals. The admission procedure also includes an interview with the Graduate Coordinator of the program.

The application deadline for fall admission is April 1 (March 1 for consideration for financial aid and assistantships).

**2. Documents to be submitted for admission (listing or sample).**

Applicants seeking admission to the graduate program in Criminology and Public Sociology are required to submit the following to the Graduate School:

1. An application for graduate admission
  2. Official transcripts of all college work (undergraduate and graduate)
  3. Official scores on the Graduate Record Examination (GRE)
  4. Three recommendations by individuals in professionally relevant fields; at least two must be from academics
  5. A writing sample in the form of an essay explaining how the MA in Criminology and Public Sociology may assist the candidate in meeting her or his personal goals
  6. Students must have a 3.0 overall undergraduate GPA.
- The admission procedure also includes an interview with the Graduate Coordinator of the program.

**C. Degree requirements. List the following:**

- 1. Total hours required. Major: 33 Minor: 0**
- 2. Proportion of courses open only to graduate students to be required in program (graduate programs only).**

No more than six hours of undergraduate and graduate level cross-listed courses will apply towards student's degree. That is, 27 of the 33 credit hours will be required to be taken from graduate-only courses.

- 3. Grades required.**

A student must have no less than a 3.0 GPA on all graduate-level courses. Grades of A, B, C, F, S, U and W are permanent grades and can be changed only by the instructor with the approval of the appropriate dean in cases of arithmetical or clerical error or as a result of protest of grade. Plus (+) or minus (-) grades may be awarded at the discretion of the faculty.

- 4. Amount of transfer credit accepted.**

No transfer credits will be accepted.

- 5. Other requirements (e.g. residence, comprehensive exams, thesis, dissertation, clinical or field experience, second major, etc.)**

- An oral qualifying exam is required at the completion of the first 9 hours of core courses.
- Students must choose either a thesis (6 hours) or internship (6 hours) option.
- An oral defense of thesis proposal or internship proposal is required before enrolling in thesis or internship hours.
- An oral defense of final thesis or internship research paper is required in order to graduate.

- 6. Language and/or research requirements.**

No foreign language requirement. A student may select from thesis (6 hours) or internship (6 hours) options. Both options require research papers and oral defense.

- 7. Any time limits for completion.**

A five year time limit will be in effect for completing degree requirements.

**D. List existing courses by title and number and indicate (\*) those that are required. Include an explanation of numbering system. List (under a heading marked "new") and describe new courses proposed.**

Existing SOC Courses in the UNCW Graduate Catalog taught by Sociology and Criminal Justice faculty

- **SOC 501/GRN 501. Aging and Society (3)** Study of age as a structural feature of changing societies and groups, aging as a social process, and age as dimension of stratification. May be taken for elective credit in the GLS program.
- **SOC 518/GRN 518. (418) Women and Aging (3)** Examines women's experiences of old age and the aging process. Specific emphasis on family, medical, and economic institutions. May be taken for elective credit in the GLS program.

**New Core Required Courses for the Proposed Program**

- **\*CRM/SOC 500. Social Research Methods (3)** Analysis of process of social research in terms of problem definition, research design, data sources, and methods of data analysis. Emphasis will be placed on the application of research methods to practical problems.
- **\*CRM/SOC 502. Evaluation, Methods, and Policy (3)** Advanced research methods course focusing on the techniques and principles of evaluation research. Emphasis will be on methods of evaluation and research design, instrument development, data collection techniques within a public/applied setting. Additionally, students will become familiar with the policy implications and consequences of evaluation research.
- **\*CRM/SOC 503. Sociological Theory (3)** Analysis of sociological theories and theoretical perspectives, with emphasis on their practical application to contemporary society.
- **\*CRM/SOC 504. Data Analysis (3)** The purpose of this course is to instruct students in techniques of quantitative data analysis. It will explore techniques to describe and make inferences from univariate, bivariate and multivariate data. Students will learn to evaluate scholarly literature that makes use of such methods. They will also have the opportunity to apply these statistics to current social problems.
- **\*CRM/SOC 505. Pro Seminar (3)** Focus on the professional role of social scientists in different types of organizational contexts as constrained by organizational policies and protocol, professional codes of ethics, budgets, client needs, politics, professional commitment, technology, inter-organizational linkages, and other considerations.

**New Elective Courses - 12 credits; students may select an area of concentration in either Criminology or Public Sociology**

- **CRM/SOC 506. Qualitative Data Analysis (3)** An introduction to qualitative methods of data gathering and analysis in sociology and criminology. Specific content will cover: participant observation, in-depth interviewing, content analysis, field methods. Students

are required to collect and analyze qualitative data. A final research paper demonstrating these methods is required.

- **CRM/SOC 507. Community-Based Participatory Research Methods (3)** Focus on engaged methodologies that facilitate community-based participatory research (CBPR). Attention will be given to the history of CBPR, ethics, logic and methods of community-based research, research design, conceptualization, measurement and sampling, modes of observation, data gathering and analysis and democratization of the research process through validating multiple forms of knowledge.
- **CRM/SOC 515. Advanced Victimology (3)** A sociological examination of victimization and formal responses to victimization. Empirical patterns of specific forms of victimization will be discussed, including: domestic violence, sexual violence, corporate violence, political violence, etc.
- **CRM 510. World Criminal Justice Systems (3)** Comparative study of criminal justice systems throughout the world. Attention to historical, structural, political, legal and philosophical similarities and differences.
- **CRM 516. Crime and Social Control (3)** A theoretical foundation for understanding formal social control strategies in response to crime patterns. Will present a history of incarceration, decarceration, diversion, and rehabilitation programs.
- **CRM 517. Death Penalty (3)** A sociological examination of capital punishment in the USA. Emphasis will be placed on US Supreme Court decisions, sociological research on various aspects of deterrence, racial bias, public opinion, and wrongful convictions.
- **CRM/SOC 530. Restorative Justice (3)** Restorative justice practices will be examined theoretically, empirically, and historically. Emphasis will be placed on Australia, New Zealand, the United Kingdom, Canada and the United States. Specific content includes: juvenile crime, violence against women, aboriginal/indigenous justice, victims and offenders needs.
- **CRM/SOC 535. Sociology of Deviant Behavior (3)** Examines what comes to be considered, and treated, as deviant behavior in historical, cultural, and societal context, linking theories as to the causes and appropriate management of deviant behavior to changes in that larger context.
- **CRM 540. Race, Class, Gender and Crime (3)** Examines the intersection of race, class, and gender with regard to criminal offending and victimization. Emphasis will be placed on the application of criminological theory to the explanation of variations in patterns of crime in relation to race, class, and gender. Additionally, this course will examine the policy implications of the current explanations.
- **CRM/SOC 549. Sociology of Law. (3)** Review of theoretical and empirical developments in the sociology of law, including classical and modern sociological theories of law and selected sociological themes of law in various social settings.

- **CRM 560. Interpersonal Violence (3)** A sociological approach to the study of interpersonal violence, including discussion of theory, methods, and empirical findings of structural, cultural, and situational criminological research on the topic.
- **CRM/SOC 561. Seminar in Criminology (3)** (recommended for all graduate criminology students) An overview of the breadth of topics that comprise the discipline of criminology, with emphases on theoretical explanations and the various reactions to crime in society.
- **CRM 570. Drug Problems and Crime (3)** Results from numerous studies have found illicit drugs, especially illicit drug sales, are linked to a myriad of crime, especially violent crime. The role of drugs in crime events and patterns of use are a focus of the course. Additionally, the topics of addiction, drug markets, both national and international and drug policy implementation and change will be addressed.
- **CRM/SOC 580. Social Justice (3)** A sociological examination of social justice, and policies that proclaim to promote social justice in the United States. The class examines various forms of institutionalized inequality on the basis of social class, race/ethnicity, gender, and sexuality. Social policy solutions are also examined.
- **CRM 585. Communities and Crime (3)** The course is designed to immerse students in research and policies related to communities and crime. The course will cover classic and contemporary contributions from the social sciences, with a primary focus on crime and place across American space along with occasional stops outside the U.S. borders. The course will also examine how communities deal with, and are affected by, crime and criminal offenders.
- **CRM/SOC 598. Thesis (1-6)** Prerequisite: Successful defense of thesis proposal. Intensive study of a topic selected by the student and approved by thesis committee.
- **CRM/SOC 599. Internship (6)** Prerequisite: permission from instructor and successful defense of internship proposal. Supervised participation in field experience, includes written final research report.
- **SOC 508. Public Sociology Seminar (3)** (recommended for all graduate Public Sociology students) An overview of the roots of public sociology and current debates surrounding public sociology. Methods, theory and praxis will be examined.
- **SOC 515. Globalization and Development (3)** Globalization is one of the most important features of the contemporary world, which describes a socioeconomic system of interdependence unprecedented in terms of scope and intensity. What is less clear and still under debate, however, is the nature and the consequences of globalization: Who has pushed it forward and who benefits from it? This course will review the process of globalization and critically examine the different perspectives on it. Students will better understand how globalization has influenced (and will change) our and other's life and development

- **SOC 520. Political Economy of Rural Development (3)** Examination of the development and underdevelopment of rural economies. Emphasis is placed on the dynamics of socioeconomic political change and the ways in which current global political economy shapes rural experiences.
- **SOC 521. Urban Sociology (3)** Examination of sociological theory and research on urban growth and its consequences on social behavior.
- **SOC 524. Social Stratification (3)** Examination of social and economic inequalities based on social class and status as basic dimensions of individual life chances as well as of the structure and dynamics of societies and the world system. Reviews current state of the field in regard to academic and policy debates, theories, methods, crucial research findings, as well as comparative analyses.
- **SOC 525. Racial and Ethnic Group Relations (3)** Examination of race and ethnicity in modern societies and the modern world system. Focuses on the causes and consequences of racism, discrimination, prejudice, racial conflict, and racial oppression in American society. Special emphasis will be given to the relationship between race/ethnicity and social class.
- **SOC 526. Social Control and Social Change (3)** This course looks at how societal control mechanisms interact with a society's ability incorporate change. Following a review of the social control literature, the class will analyze social behavior that breaks from existing patterns and expectations, such as riots, crowds, revolution, and social movements.
- **SOC 531. Self, Desocialization, No-Self (3)** Explores the social construction of self and desocialization practices through the study of sociological, postmodern, and Buddhist perspectives on self and no-self.
- **SOC 543. Corporations and Consumer Culture (3)** Critically examines the social significance of popular culture with special emphasis on corporations and the commercialization of culture.
- **SOC 546. Tourism and Society (3)** An examination of the role of tourism and tourists in human societies. Topics may include: history and growth of mass tourism; relations between hosts and guests; tourism and development; heritage, environmental and pilgrimage tourism; tourism ethics; typologies of tourists and tourist experiences; and the social consequences of tourism.
- **SOC 547. Sociology of Education (3)** Advanced analysis of the social structures and processes both affecting and characteristic of education in modern societies. Topics include: education's role in the socialization process; the ways in which education is both a product and producer of social stratification; variability in racial experiences in education; human, social, and cultural capital; social and cultural change and their impact on education.

- **SOC 550. Gender (3)** This course first explores the history of social inequality associated with gender. It will explore both micro and macro factors that perpetuate inequality as well as those factors that have reduced inequality. The course will culminate with an in-depth look at current global efforts to address gender inequality
- **SOC 565. Social Psychology (3)** This course offers an overview of the current themes in contemporary Social Psychology as well as their applications. This course focuses on the social structural determinants of social behavior and social change, with an emphasis on inequality.
- **SOC 567. Sociology of Health (3)** This course explores the effects of social structural inequality on health. It looks at the history of social, economic, and political factors that have affected health and well being. It covers comparative health care systems as well as current issues concerning the United State health care system.
- **SOC 568. Media and Democracy (3)** Critically examines the social, cultural, and political consequences of privately-owned corporate media, and the important role of independent media, in a democratic society.
- **SOC 569. Intersectionality in Media (3)** Critically examines the intersectionality of race/ethnicity, class, gender, and sexuality in popular media.
- **SOC 584. Community Development (3)** Analysis of principles, theory and practice of community change and development. Examination of multiple definitions of community and the contribution of community capitals to community well-being.
- **SOC 586. Sociology of Work, Occupations and the Labor Force (3)** Theories of work and occupations; the changing structure of the labor force, the relationships between work, the individual and society. Focus on the changes in the place of work in society corresponding to technological and organizational change. Specific topics may include workplace restructuring, women and minorities in the labor force, and relations between labor and management.
- **SOC 587. Sociology of Organizations (3)** Analysis of organizational theory and research applied to issues in contemporary society; topics include organizational social psychology, organizational structure and process, and inter-organizational relationships.
- **SOC 590. Sociology of Poverty (3)** Analysis of trends, measurement, and extent of poverty in the United States. Examination of sociological theory explaining poverty, social policy addressing policy, specifically welfare reform, and its consequences.

## **IV. FACULTY**

- A. List the names of persons on the faculty who will be directly involved in the proposed program. Provide complete information on each faculty member's**

**education, teaching experience, research experience, publications, and experience in directing student research, including the number of theses and dissertations directed for graduate programs. The official roster forms approved by SACS can be submitted rather than actual faculty vita.**

Department of Sociology and Criminal Justice (for vitae see Appendix B)

1. Dr. Susan Bullers
2. Dr. Kimberly Cook
3. Dr. Leslie Hossfeld
4. Dr. Darrell Irwin
5. Dr. Sangmoon Kim
6. Dr. Donna King
7. Dr. Christina Lanier
8. Dr. Diane Levy
9. Dr. Michael Maume
10. Dr. Clyde McDaniel
11. Dr. Stephen McNamee
12. Dr. Robert Miller
13. Dr. John Rice
14. Dr. Lynn Snowden
15. Dr. Adam Watkins
16. Dr. Cecil Wills

**B. Estimate the need for new faculty for the proposed program for the first four years. If the teaching responsibilities for the proposed program will be absorbed in part or in whole by the present faculty, explain how this will be done without weakening existing programs.**

2007-2008: 0 new faculty  
2008-2009: 2 new faculty (public sociology, criminology)  
2009-2010: 1 new faculty (sociology of law)  
2010-2011: 1 new faculty (criminology)

**C. If acquisition of new faculty requires additional funds, please explain where and how these funds will be obtained.**

New faculty positions will come from enrollment growth in the program and at UNCW.

**D. Explain how the program will affect faculty activity including course load, public service and scholarly research.**

The Department’s faculty workload policy is consistent with the College of Arts and Sciences and allows for faculty to gain workload credit for a variety of instructional methods. The workload will remain 9 hours of instruction for research-active faculty in the Department. To be a member of the graduate faculty, one must maintain research activity. Scholarly research productivity will be enhanced and increased as a result of this program since faculty will have the benefits of graduate assistants who will participate in faculty research projects and who may be employed from faculty research grants. The proposed program will also bolster existing undergraduate programs where students work with faculty on research projects, thus providing undergraduate students with role models from among the graduate students to mentor them.

## V. LIBRARY

### A. Provide a general statement as to the adequacy of present library holdings for the proposed program.

There are 347 journal subscriptions in the combined areas of sociology, criminology and criminal justice; 87% of these journals have online, full-text access. The library subscribes to both Sociological Abstracts and Criminal Justice Abstracts, which provide access to journal articles, book reviews, dissertation and book abstracts, and technical reports in the disciplines of sociology and criminology. In addition, the library provides access to secondary databases in these fields (e.g., Applied Social Sciences Indexes and Abstracts, National Criminal Justice Reference Service Abstracts).

The Department of Sociology & Criminal Justice has seen its appropriation for purchasing library materials increased to \$6,500 for the 2006-2007 AY. These funds may be used to purchase books, datasets, or audiovisual materials. The department has completely spent its appropriation every year for the last several years, such that the library boasts extensive holdings in the social sciences. The table below shows the extent of holdings in general sociology (Library of Congress Classification [LCC]: HM) and social pathology, which includes most of the books in the areas of criminology and criminal justice (LCC: HV). These figures are compared to corresponding holdings at two other state universities in the southeastern region: Fayetteville State University (FSU) and UNC Pembroke (UNCP). Although UNCP has no masters programs in sociology, criminology or criminal justice, FSU has a masters program in sociology and a new masters in criminal justice program. The table shows the count of catalogued materials in the general holdings in both general sociology and criminology & criminal justice. Of the 6,779 items totaled between sociology and criminology & criminal justice, 96% are books.

LC Call # Range	Description	Record Count			UNCW Circulation Rate*
		UNCW	FSU	UNCP	
HM1-HM1281	Sociology (General)	3,241	475	619	175.6

HV6001-HV9960	Criminology & Criminal Justice	3,538	945	954	398.8
Totals:		6,779	1,420	1,573	284.6

\* The circulation rate is the number of checkouts in the 2005-2006AY per 1,000 volumes.

In addition to these formal holdings, the Department of Sociology & Criminal Justice maintains its own informal library of books, journals, pedagogical materials and videos.

**B. State how the library will be improved to meet program requirements for the next five years. The explanation should discuss the need for books, periodicals, reference materials, primary source materials, etc. What additional library support must be added to areas supporting the proposed program?**

Although no departments at UNCW have been authorized to increase journal subscriptions within their disciplines, new tenure-track faculty members have the ability to request one journal subscription (up to a cost of \$500 per year per journal). There are three new tenure-track faculty in the Department of Sociology & Criminal Justice this year, and the department expects to hire four tenure-track faculty members for the 2007-2008 AY. We therefore have the potential to substantially increase the journal holdings in sociology and criminology by next year. In addition, the department has received a \$2000 special project fund to purchase books to redress deficiencies in the areas of social research methods and analysis. The department will actively encourage faculty to apply for these special project funds as they identify deficiencies in holdings—particularly those most relevant to the MA program.

**C. Discuss the use of other institutional libraries**

All UNCW faculty and students have borrowing privileges at other North Carolina state universities. In addition, UNCW is a member of the Coastal Library Consortium, which includes Fayetteville State University (FSU) and UNC Pembroke (UNCP). Faculty and students may use the electronic catalog to locate and place holds on books and other circulating materials at FSU and UNCP, which are usually delivered to Randall Library's circulation department within a few days. ILIAD, which is Randall Library's interlibrary loan system, is an online request application that allows faculty and students to request books, theses and dissertations, and journal articles that are not available from UNCW. These materials are usually available within several days; many articles are received in an electronic format.

## **VI. FACILITIES AND EQUIPMENT**

**A. Describe facilities available for the proposed program.**

The MA in Criminology and Public Sociology will be housed entirely in the Department of Sociology & Criminal Justice, which is located in the Social & Behavioral Sciences (SBS) building.

**B. Describe the effect of this new program on existing facilities and indicate whether they will be adequate, both at the commencement of the program and during the next decade.**

All graduate faculty members in the department have offices in SBS, and the department has some shared office space that it will be able to set aside for graduate students. Given that most, if not all, classes will be planned for times that are not in the “prime time” block identified by the College of Arts & Sciences (i.e., late afternoons and evenings), classroom availability for the graduate program will be adequate. However, should departmental growth continue over the next decade at the current rate of growth, it is quite likely that both the department and the graduate program will need additional office and classroom space.

**C. Discuss any information technology services needed and/or available.**

Technology continues to play an increasingly important role in the lives of faculty, staff and students at the University of North Carolina at Wilmington, and its importance was underscored by a vote of the Faculty Senate to “*ensure that UNCW graduates are equipped with the technology related skills necessary to ensure success in their academic disciplines and related professional pursuits.*”

The Information Technology Systems Division at UNCW provides information technology services for over 10,900 students and 1,650 faculty and staff. The division conducts planning through a systematic process engaging faculty and students within various committees.

The student, faculty and staff e-mail, calendar, and scheduling system is provided through the MS Exchange environment which also offers faculty and select staff access to on-campus services through its VPN system. The Technology Assistance Center (technology help desk) is staffed from 7:30 to 5:30 5 days a week and *Collegis* provides 24/7 support for online courses for both faculty and students. The Technology Support Center is a new facility that houses the Technology Assistance Center, student support area and a dedicated faculty support area with dedicated staff.

The E-merging technology training arm of the Information Technology Systems Division focuses on integration of teaching and learning tools in the classroom and online. This includes support of PDA’s and classroom whiteboards. Coupled with this is a *Skillport* system of online skill development courses. Blackboard/WebCT is the campus course management system used for online course development.

The UNCW campus wireless network brings nearly 90% coverage of the entire campus, while Sungard/SCT is the basis of the UNCW portal system along with enterprise system applications in the Banner suite of products. Full training and support is offered for these applications on an ongoing basis. UNCW is moving to a datamart-type format in the near future with application systems that to allow flexibility in report development and data access. To date there have been 95 classrooms outfitted with complete audio visual media systems including LCD projectors, computer systems, network access, speakers and lighting controls all developed from a baseline model for ease of support and maintenance. These classrooms are supported by three dedicated staff and five students. These classrooms were specific designed by the Division of Academic Affairs for outfitting. Cable services run to the wall in nearly all classrooms, and satellite access is available as requested predominantly as downlink services.

There are 12 computer labs across campus and two laptop (wireless) checkout locations to serve students on an ongoing basis. Randall Library has a computer lab that is designated for exclusive use by graduate students. UNCW has a preferred vendor program with Dell Computer, Inc. which offers students a preferred price for computer systems developed to utilize the collaborative environment the ITS division has implemented. The division has also developed several programs to serve faculty and staff with personal purchases at very competitive pricing structures.

**D. Discuss sources of financial support for any new facilities and equipment.**

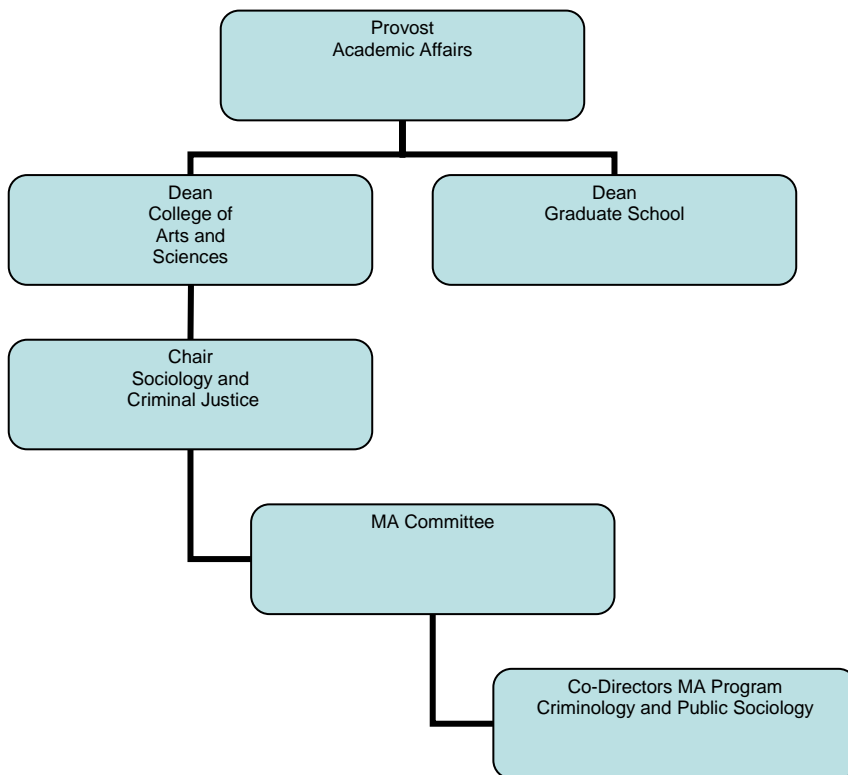
N/A

## **VII. ADMINISTRATION**

**Describe how the proposed program will be administered giving the responsibilities of each department, division, school, or college. Explain any inter-disciplinary or inter-unit administrative plans. Include an organizational chart showing the “location” of the proposed program.**

The MA Committee is a standing committee in the department of Sociology and Criminal Justice. It is composed of the Co-Directors of the MA program (one for Criminology and one for Public Sociology) and seven appointed Graduate Faculty from the department representing both Criminology and Public Sociology substantive areas. The MA Committee reports to the Chair of the department, who reports to the Dean of the College of Arts and Sciences.

The primary duties of the Co-Directors of the MA program will be to implement policies derived by the MA Committee in accordance with guidelines provided by the Graduate School.



## **VIII. ACCREDITATION**

**Indicate the names of all accrediting agencies normally concerned with programs similar to the one proposed. Describe plans to request professional accreditation. If the proposed new degree program is at a more advanced level than those previously authorized or if it is in a new discipline division, was SACS notified of a potential “substantive change” during the planning process? If so, describe the response from SACS and the steps that have been taken to date with reference to the applicable procedure.**

SACS - no substantial change

## **IX. SUPPORTING FIELDS**

**Are other subject-matter fields at the proposing institution necessary or valuable in support of the proposed program? Is there needed improvement or expansion of these fields? To what extent will such improvement or expansion be necessary for the proposed program?**

Some elective courses are proposed to be supported by other departments including the Department of Social Work and Public Administration. Due to these courses being elective in nature, they should pose no undue demand on these supporting fields or on the Sociology and Criminal Justice department.

## **X. ADDITIONAL INFORMATION**

**Include any additional information deemed pertinent to the review of this new degree program proposal.**

N/A

## **XI. BUDGET**

**Provide estimates (using the attached form) of the additional costs required to implement the program and identify the proposed sources of the additional required funds. Use SCH projections (section II.C.) to estimate new state appropriations through enrollment increase funds. Prepare a budget schedule for each of the first three years of the program, indicating the account number and name for all additional amounts required. Identify EPA and SPA positions immediately below the account listing. New SPA positions should be listed at the first step in the salary range using the SPA**

**classification rates currently in effect. Identify any larger or specialized equipment and any unusual supplies requirements.**

**For the purposes of the second and third year estimates, project faculty and SPA position rates and fringe benefits rates at first year levels. *Include the continuation of previous year(s) costs in second and third year estimates.***

**Additional state-appropriated funds for new programs may be limited. Except in exceptional circumstances, institutions should request such funds for no more than three years (e.g., for start-up equipment, new faculty positions, etc.), at which time enrollment increase funds should be adequate to support the new program. Therefore it will be assumed that requests (in the “New Allocations” columns of the following worksheet) are for one, two, or three years unless the institution indicates a continuing need and attaches a compelling justification. However, funds for new programs are more likely to be allocated for limited periods of time.**

**SUMMARY OF ESTIMATED ADDITIONAL COSTS FOR PROPOSED PROGRAM**

**INSTITUTION:** University of North Carolina Wilmington

**DATE:** 11/20/06

**Program (API #, Name, Level):** 45.1101, Criminology and Public Sociology

**Degree(s) to be Granted:** M.A. **Program Year:** 2007-2008

**ADDITIONAL FUNDS REQUIRED - BY SOURCE**

	Reallocation of Present Institutional Resources	Enrollment Increase Funds	Federal Other (identify)	New Allocations	Total
<b>Regular Term Instruction</b>					
1210 SPA Regular Salaries					
1310 EPA Academic Salaries					
Faculty ( )					
Teaching Assistants (5)		\$45,000			\$45,000
		(\$45,000)			(\$45,000)
1810 Social Security (7.65%)		\$3442			\$3442
1820 State Retirement (SPA: 6.82%) (EPA: 9.64%)					
1830 Medical Insurance (\$312.33/month)					
Scholarships					
2000 Supplies & Materials					
3000 Current Services		\$5000			\$5000
Includes travel, recruitment, software					
4000 Fixed Charges					
5000 Capital Outlay (Equipment)		\$6000			\$6000
(5 Computers for graduate students to use)		(\$5000)			(\$5000)
(1 common printer)		(\$250)			(\$250)
(1 scanner)		(\$250)			(\$250)
(toner cartridges)		(\$500)			(\$500)
TOTAL – Regular Term Instruction					
<b>Libraries (121710)</b>					
<b>Trust Funds</b>					
<b>TOTAL COSTS</b>					
<b>TOTAL Additional Costs</b>		<b>\$59,442</b>			<b>\$59,442</b>

**I INSTITUTION:** University of North Carolina Wilmington

**DATE:** 11/20/06

**Program (API #, Name, Level):** 45.1101, Criminology and Public Sociology

Degree(s) to be Granted: M.A. Program Year: 2008-2009

**ADDITIONAL FUNDS REQUIRED - BY SOURCE**

	Reallocation of Present Institutional Resources	Enrollment Increase Funds	Federal Other (identify)	New Allocations	Total
<b>Regular Term Instruction</b>					
1210 SPA Regular Salaries					
1310 EPA Academic Salaries					
Faculty (2)		\$130,000			\$130,000
Teaching Assistants (10)		\$90,000			\$90,000
1810 Social Security (7.65%)		\$16,830			\$16,830
1820 State Retirement (SPA: 6.82%) (EPA: 9.64%)		\$12,532			\$12,532
1830 Medical Insurance (\$312.33/month)		\$7,496			\$7,496
Scholarships					
2000 Supplies & Materials					
3000 Current Services		\$2500			\$2500
Includes travel, recruitment, software					
4000 Fixed Charges					
5000 Capital Outlay (Equipment)		\$6000			\$6000
5 Computer for graduate students use		(\$5000)			(\$5000)
(1 common printer)		(\$250)			(\$250)
(1 scanner) (toner cartridges)		(\$250) (\$500)			(\$250) (\$500)
<b>TOTAL – Regular Term Instruction</b>					
<b>Libraries (121710)</b>					
<b>Trust Funds</b>					
<b>TOTAL COSTS</b>					
<b>TOTAL Additional Costs</b>		<b>\$265,358</b>			<b>\$245,578</b>

**INSTITUTION:** University of North Carolina Wilmington

**DATE:** 11/20/06

**Program (API #, Name, Level):** 45.1101, Criminology and Public Sociology

**Degree(s) to be Granted:** M.A. **Program Year:** 2009-2010

**ADDITIONAL FUNDS REQUIRED - BY SOURCE**

	Reallocation of Present Institutional Resources	Enrollment Increase Funds	Federal Other (identify)	New Allocations	Total
<b>Regular Term Instruction</b>					
1210 SPA Regular Salaries					
1310 EPA Academic Salaries					
Faculty (1)		\$65,000			\$65,000
Teaching Assistants (10)		\$90,000			\$90,000
1810 Social Security (7.65%)		\$11,857			\$11,857
1820 State Retirement (SPA: 6.82%) (EPA: 9.64%)		\$14,942			\$14,942
1830 Medical Insurance (\$312.33/month)		\$3,748			\$3,748
Scholarships					
2000 Supplies & Materials					
3000 Current Services					
Includes travel, recruitment, software					
4000 Fixed Charges					
5000 Capital Outlay (Equipment)					
Computer, office equipment					
TOTAL – Regular Term Instruction					
<b>Libraries (121710)</b>					
<b>Trust Funds</b>					
<b>TOTAL COSTS</b>					
<b>TOTAL Additional Costs</b>		<b>\$185,547</b>			<b>\$185,547</b>

**INSTITUTION:** University of North Carolina at Wilmington

## XII. EVALUATION PLANS

All new degree program proposals and degree program track descriptions must include an evaluation plan which includes: (a) the criteria to be used to evaluate the quality and effectiveness of the program, (b) measures to be used to evaluate the program, (c) expected levels of productivity of the proposed program/track for the first four years of the program (numbers of graduates), (d) the names, addresses, and telephone numbers of at least three persons...qualified to review this proposal and to evaluate the program once operational, and (e) the plan and schedule to evaluate the proposed new degree program prior to the completion of its fifth year of operation once fully established.

The annual criteria we will use to evaluate MA in Criminology and Public Sociology include the number and quality of applicants, the number of students accepted into the program, performance in graduate coursework, advisor and mentor feedback, graduate student professional activity, the number of successful theses and comprehensive exams (written and oral components), and placement of graduates.

### B. Measures to be used to evaluate the program: Evaluation Plan -- Annual Activities

Criteria	Indicators	Measures
1. Quality and number of applicants	Eligible applicants will have: <ul style="list-style-type: none"> <li>exceeded minimum criteria set by Graduate School</li> <li>submitted all materials requested</li> </ul>	<ul style="list-style-type: none"> <li>Number of eligible applications received</li> <li>Average GRE scores</li> </ul>
2. Number of students accepted into the program	Successful applicants will have above average or excellent ratings by the departmental admissions committee.	Number of students accepted into the program
3. Performance in graduate coursework	Successful graduate students will have exceeded a 3.0 GPA in all graduate coursework.	Average GPA for cohort
4. Advisor and mentor feedback	Successful graduate students will have received positive feedback from advisors and/or mentors.	Qualitative assessments of student performance/progress toward the degree
5. Graduate student professional activity	Successful graduate students will have attended at least one academic conference <u>or</u> presented or co-presented at least one academic conference paper <u>or</u> authored or co-authored a peer-reviewed	<ul style="list-style-type: none"> <li>Number of graduate students who attended an academic conference</li> <li>Number of conference papers presented or co-presented by graduate</li> </ul>

	publication.	students <ul style="list-style-type: none"> <li>Number of peer-reviewed publications authored or co-authored by graduate students</li> </ul>
6. Theses and comprehensive exams	Successful graduate students will have: <ul style="list-style-type: none"> <li>passed the thesis requirement (written and oral components) <u>or</u> passed the internship requirement (written and oral components)</li> </ul>	Number of graduates from the program
7. Placement of graduates	<ul style="list-style-type: none"> <li>Successful graduates of the program will have found employment in a professional occupation <u>or</u> been accepted into a doctoral degree program</li> </ul>	<ul style="list-style-type: none"> <li>Number of graduates placed in professional occupations</li> <li>Number of graduates accepted into doctoral degree programs</li> </ul>

**C. Projected productivity levels (numbers of graduates):**

	Year 1 (2007-2008)	Year 2 (2008-2009)	Year 3 (2009-2010)	Year 4 (2010-2011)	TOTALS
Graduates	0	8	11	13	32

**D. Recommended consultants/reviewers: Names, titles, addresses, e-mail addresses, and telephone numbers. May not be employees of the University of North Carolina.**

1. Dr. Raymond J. Michalowski, Arizona Regents' Professor of Criminal Justice, Department of Criminal Justice, Northern Arizona University, [Raymond.Michalowski@nau.edu](mailto:Raymond.Michalowski@nau.edu), (928)523-3710
2. Dr. Ronet Bachman, Professor and Chair, Department of Sociology and Criminal Justice, University of Delaware, [ronet@udel.edu](mailto:ronet@udel.edu), (302)831-2581
3. Dr. Karen Parker, Associate Professor, Department of Criminology, Law and Society, University of Florida, [kparker@crim.ufl.edu](mailto:kparker@crim.ufl.edu), (352) 392-1025 ext 205
4. Dr. Phil Nyden, Professor and Director, Center for Urban Research and Learning Loyola University Chicago, Lewis Towers, 10th Floor, 820 N. Michigan Avenue, Chicago, IL 60611, Phone: (312) 915-7760, Fax: (312) 915-7770, [pnnyden@luc.edu](mailto:pnnyden@luc.edu)
5. Dr. Roberta Spalter-Roth, Director Research and Development Department, American Sociological Association, 1307 New York Avenue, NW, Suite 700, Washington, DC 20005, Phone:(202) 383-9005, [spalter-roth@asa.net](mailto:spalter-roth@asa.net)

**E. Plan for evaluation prior to sixth operational year.**

UNCW has a set of guidelines and a well defined process for the review and evaluation of its graduate programs (see [http://www.uncw.edu/grad\\_info/pdf/Guidelines2001.PDF](http://www.uncw.edu/grad_info/pdf/Guidelines2001.PDF)). After the second full year of operation, the proposed program will undertake a comprehensive self-study as outlined by these guidelines.

**IX. REPORTING REQUIREMENTS**

**Institutions will be expected to report on program productivity after one year and three years of operation. This information will be solicited as a part of the biennial long-range planning revision.**

**Proposed date of initiation of proposed degree program:** August 2007

**This proposal to establish a new program has been reviewed and approved by the appropriate campus committees and authorities.**

**Chancellor** \_\_\_\_\_

**Date** \_\_\_\_\_

## **Appendix A – Advisory Board Members and Affiliations**

Janet Nelson, NC Partnership for Children, Wrightsville Avenue  
Dr. Tom Barth, UNCW, Political Science  
Claude Odom, NC Dept. of Juvenile Justice  
Larry Bonney, National Center for Missing and Exploited Children  
Rebecca Caldwell, Crossroads  
Sterling Cheatam, City Manager, City of Wilmington  
Dr. Deborah Covington, Inveresk  
Lynn H. Pharr, Cape Fear United Way  
Amy Price, Dept of Health and Human Services  
Benjamin Quattlebaum, Wilmington Housing Authority  
Bruce Hickman, Wilmington Police Dept.  
Cathy Howell, AFL-CIO  
Mary Ann Lama, Domestic Violence Shelter  
Christine McNamee, New Hanover County Social Services  
John Ranalli, Director New Hanover County Juvenile Day Treatment Center  
Dr. P. Nelson Reid, Social Work, UNCW  
Bob Speight, Juvenile Justice Court Counselors  
Kitty, Yerkes, Domestic Violence Shelter  
J. L. Yost, Cape Fear Community College  
Babette Boyd, UNCW  
Lynn Smithdeal, Faculty Liaison, Community Engagement Programs  
UNCW Division for Public Service and Continuing Studies  
Reverend Mac Legerton, Center for Community Action,  
Serena Lau, JD, MSW, Community Mediation Center  
Joan Pennell, Chair, Social Work Dept. North Carolina State University  
Dr. Olga Wheatley, IBM Education  
Frankie Roberts, Director, LINC  
John Parker, Executive Director, Good Work, Durham

## **Appendix B – Sociology and Criminal Justice Faculty Vitae**

### **Donna King**

Department of Sociology and Criminal Justice  
University of North Carolina Wilmington  
910-962-3574  
[kingd@uncw.edu](mailto:kingd@uncw.edu)

#### **Education**

- Ph.D.**           **Sociology** with distinction, Graduate Center, City University of New York. February 1994. **Dissertation:** "Doing Their Share to Save the Planet: Children and Environmental Crisis."
- M.A.**           **Psychology** summa cum laude, University of West Georgia, December 1986.  
**Thesis:** "The Experience of Transformation through the Alexander Technique."
- B.A.**           **Music** magna cum laude, State University of New York at New Paltz, August 1979.

#### Administrative Experience

- 2002-2003**    Associate Director, Master of Liberal Studies Program, University of North Carolina Wilmington
- 2005           **Interim Associate Director, Master of Liberal Studies Program**, University of North Carolina Wilmington

#### Academic Experience

- 1999-present   **Associate Professor**, Department of Sociology & Criminal Justice, University of North Carolina Wilmington.
- 1994-1999     **Assistant Professor**, Department of Sociology & Anthropology, University of North Carolina Wilmington
- 1992-1994     **Instructor**, Orange County Community College, Middletown, New York.
- 1989/1992     **Adjunct Lecturer**, CUNY, Baruch College. New York, New York.
- 1986            **Teaching Assistant**, University of West Georgia. Carrollton, Georgia.

#### Teaching and Research Areas:

Media and Society  
Popular Culture and Consumer Society

Sociology of Children and Childhood  
Introduction to Sociology – Race, Class, Gender & Society  
Feminist critique of consumer culture  
Constructions and deconstructions of the self

**Research**

2003-2004 **Research Associate and Project Director.** NIH/SBIR grant, Janice Kupersmidt, Principal Investigator. Created and tested a media literacy curriculum designed to prevent alcohol and tobacco use among elementary age children, conducting focus groups with 3<sup>rd</sup>-5<sup>th</sup> grade students and teachers. The core curriculum involved teaching students how to read and interpret magazine and television advertising using the principles of media literacy and substance abuse prevention.

**Publications**

**Books**

*Doing Their Share to Save the Planet: Children and Environmental Crisis.* Rutgers University Press. 1995.

**Chapters**

"If We Don't Do Anything Now, There Won't Be Anything Left: Categories of Concern in Children's Drawings of Environmental Crisis" in Joel Best, editor, *Troubling Children.* Aldine de Gruyter. 1994.

**Journal articles**

"A Cultural Studies Approach to Teaching the Sociology of Childhood." *Sociation Today.* 4(1), 2006.

"Using Videos to Teach Mass Media & Society from a Critical Perspective." *Teaching Sociology.* 28(3):232-240, 2000.

Donna L. King and Christopher Mele. "Making Public Access Television: Community Participation, Media Literacy, and the Public Sphere." *Journal of Broadcasting and Electronic Media.* 43(4):603-623, 1999.

"Using Children's Artwork in Social Research." *The Maine Scholar.* 8, Autumn 1995:85-103.

"Captain Planet and the Planeteers: Kids, Environmental Crisis, and Competing Narratives of the New World Order." *The Sociological Quarterly.* 35(1):103-120, 1994.

"Prostitutes as Pariah in the Age of AIDS: A Content Analysis of Coverage of Women Prostitutes in *The New York Times* and the *Washington Post*, 1985-1988." *Women & Health,* Vol. 16, No. 3/4, 155-176, 1990.

**Book Reviews**

"Goodness Personified: The Emergence of Gifted Children." *Contemporary Sociology.* 26(5), 1997.

### **Essays**

"Noble Savages and Eco-Tyrants: Images of Children in Environmental Crisis."  
*Conscience*. 15(4):3-10, 1994.

### **Experience Directing Graduate Student Research**

Mary Walsh, "The Role of Media in the Marginalization of Women's Sports," Spring 2006, Faculty Director.

Robin Robertson, "Island Voices: Oral Histories of Carolina Beach, Spring 2005, Faculty Director.

Cathy Bowens, "The Poisoning of a Community: Environmental Racism in Warrenton, NC, Fall 2005, Faculty Reader.

Eric Bruton, "Unifying Cultural Values in World Scripture," Fall 2005, Faculty Reader.

Casey Mabry, MALS final project, Spring 2003, Faculty Director

Lesia Heltzell, "The Hidden Curriculum," Spring 2002, Faculty Director.

Christie O'Sullivan, "Innocence Lost." Fall 2002, Faculty Reader.

Linda Range, "White Gloves, White Girls, White Lies," Fall 2002, Faculty Reader

Linda MacRae, "No Longer Wicked: Real Stepmom Experiences that Challenge the Stereotype," Fall 2001, Faculty Reader

Served as the Graduate School's outside representative for Eric Vrooman's MFA thesis defense in Creative Writing, Spring 2000

Sandra Wait, "Attrition and Retention of Teachers." Master of School Administration thesis. Served as the Graduate School's outside representative at the defense. April 1997.

### **Experience Directing Undergraduate Student Research:**

Courtney McDonald, "Importance of Networking in Academia," Spring 2005.

Sharon Bundick, "Ethnographic Study of Homelessness In Wilmington, NC," Spring 2005.

Kristin Henry, "The Consumer Society: From Theory to Action," Spring 2003

Nicole Tomczyk, "Horror Movie Fans: Fact and Fiction," Spring 2003

Erin Speer, "Animals and Society," DIS, Spring 2003

Kristin Henry, "Critical Study of Consumer Culture," DIS, Fall 2002

Kim Hart, "The War on Terrorism," Spring 2002

Alicia Sowisdral, "Body Satisfaction among Young Black Women," Spring 2002

Meg McCarry, "Gendered Behavior in a Daycare Setting," Spring 2002

Jennifer Mitchell, "The Evolving Self," Spring 2001

Andrew Mueller, "Negotiating a Career in Public Relations," Spring 2001

Stacy Moran, "Women of Islam and their Code of Dress," Fall 2001

Michelle Smith, "Themes in the Sociology of Childhood," Fall 2001

- Christopher Rochelle, "The Effects of Divorce on Young People's Attitudes about Commitment," DIS, Fall 2000.
- Jere McKeithen, "Media-made Southerners and Newcomers," Spring 2000.
- Jennifer Heaton, "Interpersonal Conflict Among Daycare Children," Fall 2000.
- Elizabeth Cherry, Content Analysis of Newspaper Coverage of Vegetarianism, DIS, Spring 1999
- Douglas Mayes, DIS, Stereotypes of Southerners in the Media, Spring 1999
- Ashley Funderburk, White Hip Hop Fans: A Sociological Analysis of a Subculture, Spring 1999
- Rhonda Greene, Studying the Social Worlds of Children and the Least-Adult Role, Spring 1999
- Elizabeth Cherry, Go Vegan! The Call of the Vegan Subculture, Fall 1999
- Jennifer Gordon, "The Unknown Child." Committee member, Honor's thesis project. Spring 1998.
- Brent Booker, "Community Television: A Resource for Society." Fall 1997.
- Blair Jackson, "The Role of Women in Art During the Turn of the Century," DIS, Fall 1997.
- Alison Mercer, "Personal Ads: A content analysis." Fall 1997.
- Dionne Tate, "Understanding Hip Hop." Fall 1997.
- Jennifer Wilkins, "Breaking Down Exotic Dancers." Fall 1997.
- Samantha Smith, "Images of Working Women in the 1990s." Fall 1996.
- Audrey Tolar, "Exploring a Transition: Three Middle School classes write on becoming a teenager." Spring 1996.
- Katherine L. Stewart, "Do Equivalence Classes Produce Clustering Similar to Language Classes?" Committee member, Honor's thesis project. Fall 1995/Spring 1996.
- Michael Adams, "The Salesman's View of the Consumer." Fall 1994.

November, 2006

**Robert K. Miller, Jr.**

**EDUCATION**

Ph.D. Temple University (Sociology: January, 1978)  
Dissertation Title: "Job Mobility and Employment Difficulty: Social and  
Cultural Heritage Bases" (Advisor: William L. Yancey)

M.A. Temple University (Sociology: January, 1972)

A.B. Franklin and Marshall College (Sociology: June, 1970)

**POSITIONS HELD**

**University of North Carolina Wilmington**

Professor: Fall, 1990 to present  
Assistant Chair: Fall, 1996 to May, 2004  
Associate Professor (tenured): Fall, 1983 to Spring, 1990  
Graduate Faculty: member from outset to present  
Assistant Professor: Fall, 1978 to Spring, 1983  
Lecturer: Fall, 1977 to Spring, 1978

**Temple University**

Instructor (part-time): 1975\_1976, 1976\_1977  
Graduate Teaching Assistant: 1972\_1973, 1974\_1975  
Graduate Research Fellow: 1973\_1974  
Graduate Research Assistant: 1970\_1971, 1971\_1972

**COURSES TAUGHT**

Methods of Sociological Research (SOC 300) Urban Sociology (SOC 315)  
Racial and Ethnic Group Relations (SOC 325) Community (SOC 485)  
Social Classes (SOC 380) Human Societies (SOC 205)  
Sociology of Religion (SOC 346) Social Problems (SOC 215)  
Sociology of Education (SOC 347) Introduction to Sociology (SOC  
105) Sociology of Poverty (SOC 460)

**RESEARCH AREAS**

### **Social Stratification/Mobility**

Wealth Inheritance/Intergenerational Transmission of Wealth

Status group relations and status group mobility

Forms of class and status group conflict

Contributions of elite education to occupational and income attainment

### **Ethnicity/Immigration, Immigrant Work Experiences**

## **PUBLICATIONS**

### **Books**

McNamee, Stephen J. and Robert K. Miller, Jr. 2004. *The Meritocracy Myth*. New York: Rowman and Littlefield.

Miller, Robert K. Jr. and Stephen J. McNamee (eds.). 1998. *Inheritance and Wealth in America*. New

York: Plenum. Included in this volume are the following two chapters:

Miller, Robert K. Jr. and Stephen J. McNamee. "The Inheritance of Wealth in America"

McNamee, Stephen J. and Robert K. Miller, Jr. "Inheritance and Stratification"

### **Refereed Journal Articles**

McNamee, Stephen J. and Robert K. Miller, Jr. 2004. "The Meritocracy Myth." *Sociation Today* 2,1 (Spring).

Miller, Robert K. Jr. and Toni M. Benton. 1992. "The Effects of ROTC Program Participation on Socioeconomic Status and Life Satisfaction." *Sociological Inquiry* 62,3 (August):348-364.

Miller, Robert K. Jr. 1989. "Segmentation and Gender Occupational Segregation Within an Industrial Labor Market: The Radio Manufacturing Industry in Philadelphia, 1926-1935." *Sociological Spectrum* 9,4 (October):403-424.

McNamee, Stephen J. and Robert K. Miller, Jr. 1989. "Theory and Research on Estate Inheritance: A Sociological Lacuna." *Sociological Inquiry* 59,1 (February):7-31.

Bland, Connie E., Kenneth F. Ferraro and Robert K. Miller, Jr. 1987. "Use of Time and Satisfaction with the Psychotherapeutic Relationship." ***Sociological Focus*** 20,1:33-44.

Levy, Diane E., Robert K. Miller, Jr. and Cecil L. Willis. 1984. "Social and Economic Macrostructural Antecedents of Fertility." ***Sociological Inquiry*** 53,1 (Spring):26-43.

Wells, Richard H., Robert K. Miller, Jr. and Kemp S. DeVille. 1983. "Hunger as a Global Phenomenon: A Case of Sociological Neglect." ***Humanity and Society*** 7,4 (November):338-372.

Miller, Robert K. Jr. 1982. "Postmigration Employment Experiences of European Immigrants: A Test of Assimilationist Theory." ***Sociological Focus*** 15 4 (October):359-377.

Miller, Robert K. Jr. 1982. "Labor Market Structure and Career Occupational Status Mobility: A Theoretical Model." ***Sociological Inquiry*** 52,2 (Spring):152-163.

Miller, Robert K. Jr. 1981. "Determinants of Initial Postmigration Employment Experience Among European Immigrants, 1900-1935." ***International Migration Review*** 15,3 (Fall):529-542.

Miller, Robert K. Jr. 1978. "A Comment on Lewis's 'Writers of the Academy, Unite!'" ***The American Sociologist*** 13,3 (August):177-179.

### **Book Chapters (not published elsewhere)**

Miller, Robert K. Jr., Jeffrey P. Rosenfeld, and Stephen J. McNamee. 2003. "The Disposition of Property: Transfers Between the Dead and the Living" Pages 817-925 in Clifton D. Bryant (ed.), ***Handbook of Death and Dying***. Thousand Oaks, CA: Sage Publications.

Miller, Robert K. Jr. 1981. "Patterns of Employment Difficulty Among European Immigrant Industrial Workers During the Great Depression: Local Opportunity and Cultural Heritage." Chapter 11

(pages 297-325) in Ivar Berg (ed.), ***Sociological Perspectives on Labor Markets***. New York: Academic Press.

Miller, Robert K. Jr. 1981. "Roots of the White Immigrant Experience: Employment Difficulties from 1900-1935." Pages 107-118 in David Claerbaut (ed.), ***New Directions in Ethnic Studies: Minorities in America***. Saratoga, California: Century Twenty One Publishing.  
**Proceedings (not abstracts and not published elsewhere)**

Miller, Robert K. Jr. 1981. "The Process of Occupational Status Mobility: Achievement or Allocation?"  
In J.H. Bullard, J. Hughes, W. McWhorter, D. Shoemaker, and J.K. Skipper, Jr. (eds.)  
***Sociological Research Symposium Proceedings, XI***. Blacksburg, Virginia: Alpha Kappa Delta, Virginia Polytechnic Institute and State University.

Miller, Robert K. Jr. 1979. "Academic Job Market Structure and the Adequacy of Job Advertisements as an Indicator of Job Opportunities for Sociologists." In P. Lewis, L.D. Nelson, D. Scully, and J.S. Williams (eds.), ***Sociological Research Symposium Proceedings, IX***. Richmond, Virginia: Alpha Kappa Delta, Virginia Commonwealth University.

### **Other Publications**

Miller, Robert K. Jr. 1996. "Sociology of Education Course Syllabus," Pp. 202-205 in Jeanne Ballantine, Floyd Morgan Hammack, Edith King, Caroline Hodges Persell and Theodore C. Waganaar. (eds.)  
***Teaching Sociology of Education: Syllabi and Instructional Materials***. Washington, D.C.: American Sociological Association.

Miller, Robert K. Jr. 1981. "But Some Are More Equal Than Others." ***The Humanist Sociologist*** 6,2:13-15.

**Papers Presented at Professional Meetings [more than 25; see long CV]**

**Grants and fellowships (awarded and applied for)**

UNCW Web Course Development Grant. Summer, 2005. \$5000.

Hope VI Impact Evaluation. Proposal submitted to evaluate impacts of Taylor Homes redevelopment. Co-principal investigator with Clyde O. McDaniel.

UNCW Summer Initiatives Research Grant. Summer, 2001. \$1000.

UNCW College of Arts and Sciences. Summer Initiatives Research Grant, June, 1992. \$2700.

UNCW Faculty Research and Development Fund. Research Grant, March, 1989. \$600.

Summer Research Fellowship, Biomedical Research Support Grant. College of Liberal Arts, Temple University, 1976. \$800.

Graduate Research Fellowship. Temple University, 1973\_74. \$3,400 plus tuition waiver.

Ph.D. Dissertation Grant. Department of Sociology, Temple University, 1974. \$400.

**Manuscript reviewer for scholarly journals:**

Social Forces  
Social Problems

**For complete information on service to the profession, the university, and local communities, see long CV.**

**Robert K. Miller, Jr.  
Professor of Sociology  
Department of Sociology and Criminal Justice**

I graduated from Franklin and Marshall College in 1966 with an AB in sociology and earned my PhD in sociology from Temple University in 1978. Since coming to UNCW thirty years ago, undergraduate teaching and sociological research have been my main activities. Over the years, I have taught eleven different courses and regularly teach six of these. This semester, I am teaching an online course and our senior seminar, the capstone course for our majors. I try to incorporate my research into the courses I teach. While I haven't kept track of the numbers, over the years I have supervised a

large number of senior projects and directed individual studies. I have served on several undergraduate honors committees, and have served on a few masters committees. I have included students in my research: three students are co-authors of articles I have published in scholarly journals. Finally, I have been a member of the graduate faculty since its inception.

MICHAEL O. MAUME, Ph.D.  
Department of Sociology & Criminal Justice  
University of North Carolina at Wilmington 601 S.  
College Road  
Wilmington, NC 28403-5978  
maume@uncw.edu  
(910) 962-7749

#### EDUCATION

1998 Ph.D., Sociology, Louisiana State University  
1994 M.A., Sociology, College of William and Mary  
1992 B.A., Sociology, Virginia Wesleyan College

#### EMPLOYMENT

2006-present Associate Professor, Department of Sociology & Criminal Justice, University of North Carolina Wilmington  
2001-2006 Assistant Professor, Department of Sociology & Criminal Justice, University of North Carolina Wilmington  
1998-2001 Assistant Professor of Sociology, Department of Sociology & Anthropology, Ohio University

#### RESEARCH INTERESTS

Macrosocial Correlates of Lethal Violence  
Crime and Victimization in School and Community Contexts  
Juvenile Justice Decision Making  
Life Course and Criminal Careers

#### GRANTS AND CONTRACTS

2004-05 Co-principal Investigator (with Reid Toth and Cecil Willis), "Disproportionate Minority Contact Demonstration Project in New Hanover County," North Carolina Governors Crime Commission, \$42,300.  
2004 Online Course Development (for World Criminal Justice Systems), UNCW, \$5,000  
2002 Summer Research Initiative, UNCW, \$3,000  
2002 Online Course Development (for Criminology), UNCW, \$5,000  
2000 "Using Computer-based Media to Enhance the Introductory Criminal Justice Course" (with Rick Matthews and Martin D. Schwartz), Center for Innovations in Technology for Learning, Ohio University, \$11,000  
1997 "Assessing Changes in Perceptions of Social Climate in a Juvenile Correctional Institution," Substance Abuse Unit, Virginia Department of Juvenile Justice, \$4,600

#### PUBLICATIONS

- Maume, Michael O., Reid C. Toth, and Jeffrey W. Spears. 2006. "Race in Context: The Impact of Structural Factors on Racial Differences in Juvenile Court Processing." *International Review of Modern Sociology*.
- Maume, Michael O., Graham C. Ousey, and Kevin Beaver. 2005. "Cutting the Grass: Life Course Transitions and Desistance from Marijuana Use." *Journal of Quantitative Criminology* 21:27-53.
- Maume, Michael O. and Matthew R. Lee. 2003. "Social Institutions and Violence: A Sub-National Test of Institutional Anomie Theory." *Criminology* 41(4):1137-1172.
- Lee, Matthew R., Michael O. Maume, and Graham C. Ousey.\* 2003. "Social Isolation and Lethal Violence Across the Metro-Nonmetro Divide: The Effects of Socioeconomic Disadvantage and Poverty Concentration on Homicide." *Rural Sociology* 68(1):107-131. \*Authors are listed alphabetically; contributions are equal.
- Schwartz, Martin D. and Michael O. Maume (Eds.). 2003. *Teaching the Sociology of Deviance*. Fifth Edition. Washington, DC: American Sociological Association.
- Matthews, Rick, Michael O. Maume, and William Miller. 2001. "Deindustrialization, Economic Distress and Homicide Rates in Mid-sized Rustbelt Cities." *Homicide Studies* 5(2): 83-113.
- Alvi, Shahid, Martin D. Schwartz, Walter S. DeKeseredy, and Michael O. Maume. 2001. "Women's Fear of Crime in Canadian Public Housing." *Violence Against Women* 7(6): 638-61.
- Maume, Michael O. and Rick A. Matthews (Eds.). 2001. *Syllabi and Instructional Materials for Courses in Juvenile Delinquency*. Fourth Edition. Washington, DC: American Sociological Association.
- Kilburn, John C. and Michael O. Maume. 2000. "The Paradox of Neighborhood Association Formation and Membership." *Research in Community Sociology* 10: 327-44.
- Schwartz, Martin D. and Michael O. Maume (Eds.). 1999. *Teaching the Sociology of Deviance*. Fourth Edition. Washington, DC: American Sociological Association.
- Maume, Michael O., William B. Bankston, and Edward S. Shihadeh. 1997. "Whose Ox is Being Gored?: An Examination of the Determinants of Public Support for Coercive Social Control Policies." *Journal of Crime & Justice* 20(2): 33-50.
- Ousey, Graham C. and Michael O. Maume. 1997. "The Grass is always Greener: Explaining Rural and Urban Differences in Marijuana Use." *Sociological Focus* 30(3): 293-303.
- Shihadeh, Edward S. and Michael O. Maume. 1997. "Segregation and Crime: The Relationship Between Black Centralization and Urban Black Homicide." *Homicide Studies* 1(3): 254-80.
- Smith, Benjamin, Michael O. Maume, and Scott Reiner. 1997. "Perceptions of Social Climate in a Juvenile Correctional Institution." *Journal of Offender Rehabilitation* 25(1/2): 143-62.

#### PAPERS UNDER REVIEW

- Phillips, Scott W. and Michael O. Maume. 2006. "Have Gun Will Shoot? Guns, Intentions, and the Escalation of Interpersonal Conflict." Under review at *Homicide Studies*.

#### JOURNAL MANUSCRIPT REVIEWS

*American Sociological Review*

*Journal of Research in Crime & Delinquency*

*Journal of Quantitative Criminology*

*Journal of Research in Crime & Delinquency*

*Studies on Crime & Crime Prevention*

*Violence and Victims*

*Women's Health and Urban Life*

*Criminology*

*Social Problems*

*Justice Quarterly*

*Rural Sociology*

*Sociological Focus*

*Sociological Spectrum*

*Criminal Justice*

#### PROFESSIONAL MEMBERSHIPS

American Society of Criminology

Southern Sociological Society

Homicide Research Working Group



Dr. Michael O. Maume  
Experience Directing Student Research

Papers Published with Students

Maume, Michael O., Graham C. Ousey, and Kevin Beaver\*. 2005. "Cutting the Grass: Life Course Transitions and Desistance from Marijuana Use." *Journal of Quantitative Criminology* 21:27-53. \*Dr. Beaver, a former undergraduate student of mine from Ohio University, is now on the faculty at the School of Criminology & Criminal Justice at Florida State University.

Theses Supervised

Lisa DiCarlo (Ohio University)

Thesis Committees

Tricia Cruciotti (Ohio University)

Dan Voytek (Ohio University)

Directed Individual Study and Other Undergraduate Research Projects

<u>Year</u>	<u>Student</u>	<u>Project</u>
2006	Amanda Long	Infanticide
2005	Natia Hamilton	Disproportionate Minority Contact Project
2004	Amber Rabon	Teaching Internship for CRJ 105
	Jeff Harvey	Homicide in the U.S.
	Catherine Herring	Infanticide
2003	Jennifer Kruckeberg	A Comparison of Social Learning and Social Control Theories as a Potential Explanation for Juvenile Delinquency
2002	Vanessa Calvery	Homicide in Small and Mid-sized Cities
	Angel Moore	Perceptions of Crime
	Lori Gammaro	The Effects of Parental Incarceration on their Children

Other

Two of my colleagues and I hired three undergraduate research assistants in Spring and Summer 2005 for our research project on disproportionate minority contact in New Hanover County. The students fine-tuned skills they learned in SOC 300 and SOC 301, and all made plans to go on to graduate school. One of them, Jennifer Reingle, was recently accepted and is now enrolled in the MA program in criminal justice at the University of Cincinnati.

CURRICULUM VITAE  
Adam M. Watkins

University of North Carolina Wilmington  
Department of Sociology and Criminal Justice  
208-J Social and Behavioral Sciences Bldg.  
601 South College Road  
Wilmington, NC 28403-5978

Office Phone: 910-962-7723  
Cell Phone: 314-304-8819  
Fax: 910-962-7385  
E-mail: watkinsa@uncw.edu

ACADEMIC POSITIONS

---

2006-Present *Assistant Professor*, Department of Sociology and Criminal Justice, University of North Carolina Wilmington.

DEGREES AWARDED

---

Ph.D.                      University of Missouri – St. Louis  
2006                      St. Louis, Missouri  
                                 Criminology and Criminal Justice

M.P.A.                    Bowling Green State University  
2002                    Bowling Green, Ohio  
                                 Political Science

B.S.                        Bowling Green State University  
2000                    Bowling Green, Ohio  
                                 Criminal Justice

PUBLICATIONS AND PRESENTATIONS

---

*PAPERS IN REFEREED JOURNALS*

2007    Watkins, Adam M. and Scott. H. Decker. “Patterns of Homicide in East St. Louis.”  
*Homicide Studies* 11(1).

2005    Watkins, Adam M. “Examining the Disparity Between Juvenile and Adult Victims in  
Notifying the Police: A Study of Mediating Variables.” *Journal of Research in Crime  
and Delinquency* 42(3): 333-353.

*PAPERS UNDER REVIEW*

- 2006 Watkins, Adam M. "Exploring the Spillover Hypothesis: Do Imported Community Conditions Affect School-Based Weapon Carrying?" Submitted to *Criminology* in November.

PAPERS UNDER REVIEW (cont.)

- 2006 Watkins, Adam M. and Chris Melde. "The Effect of Self-Control on Unit and Item Nonresponse in an Adolescent Sample." Revised and Resubmitted to *Journal of Research in Crime and Delinquency* in September.

TECHNICAL REPORTS

- 2006 Decker, Scott H., Beth M. Huebner, Adam Watkins, and Lindsey Green. "Project Safe Neighborhoods Case Study Report: Eastern District of Missouri." Reported submitted to the National Institute of Justice, May.
- 2005 Decker, Scott H., Richard Rosenfeld, Robert Fornango, Allison Deutsch, Lindsey Green, and Adam Watkins. "Analysis of St. Louis Rape, Aggravated Assault, Simple Assault, and Other Sex Offenses, 2004." Report submitted to St. Louis Metropolitan Police Department, July.
- 2005 Decker, Scott H., G. David Curry, Shannan Catalano, and Adam Watkins. "Final Report: Strategic Approaches to Community Safety Initiative (SASCI) in St. Louis." Report submitted to National Institute of Justice, March.

PRESENTATIONS

- 2005 Watkins, Adam M. "Identifying Predictors of Student Weapon Carrying." Paper Presented at the annual meeting of the American Society of Criminology, Toronto, Canada, November.
- 2005 Green, Lindsey, Adam M. Watkins, and Scott H. Decker. "Does Age Matter? Comparing Adult and Juvenile Patterns of Firearm Acquisition and Use." Paper Presented at the annual meeting of the American Society of Criminology, Toronto, Canada, November.
- 2005 Watkins, Adam M. "The Effect of Self-Control on Unit and Item Nonresponse in an Adolescent Sample." Paper presented at the annual meeting of the Academy of Criminal Justice Sciences, Chicago, IL, March.
- 2003 Watkins, Adam M. and Scott H. Decker. "Patterns of Homicide in East St. Louis." Paper presented at the annual meeting of the American Society of Criminology, Denver, CO, November.

- 2003 Watkins, Adam M. "Juvenile Victims and Their Likelihood of Reporting to Police and Nonpolice Officials." Paper presented at the annual meeting of the Midwestern Criminal Justice Association, Chicago, IL, October.

#### AWARDS AND PROFESSIONAL MEMBERSHIPS

---

##### AWARDS

- 2006 *Grant Proposal Development Fellowship*, Office of Research Services and Sponsored Programs, University of North Carolina Wilmington.
- 2005 *Graduate Student Travel Award*, Annual Meeting of the Academy of Criminal Justice Sciences, Chicago, IL, March.
- 2003 *Outstanding Student Paper Award*, Annual Meeting of the Midwestern Criminal Justice Association, Chicago, IL, October.

##### PROFESSIONAL MEMBERSHIPS

- 2001-Present Academy of Criminal Justice Sciences  
2002-Present American Society of Criminology

I received my bachelor's and master's degrees from Bowling Green State University and acquired my Ph.D. in Criminology and Criminal Justice from the University of Missouri – St. Louis in 2006. I have recently published on issues dealing with the sharp disparity in police reporting between juvenile and adult victims, as well as patterns of homicide in East St. Louis, Illinois. More recently, I have assisted in the process and outcome evaluation of the Project Safe Neighborhoods Initiative (P.S.N.) in the Eastern District of Missouri and Southern District of Illinois. My duties have included collecting, analyzing, and spatially mapping data; and meeting with local, state, and federal agencies to help coordinate the PSN initiative. In completing this program evaluation, I have also worked closely with graduate students in carrying out research.

## **CURRICULUM VITAE**

John Steadman Rice

### **Office Address:**

Department of Sociology and Criminal Justice  
Social and Behavioral Sciences Building 208D  
University of North Carolina at Wilmington  
601 South College Road  
Wilmington, NC 28403  
(910)-962-7313  
[ricej@uncwil.edu](mailto:ricej@uncwil.edu)

### **Education:**

Ph.D. Department of Sociology, University of Virginia (May, 1992) (Specialization in Sociology of Culture and Sociology of Deviance)

M.A. Department of Sociology, University of Nebraska at Omaha (December, 1989)

B.F.A. Writer's Workshop/Creative Writing Program, University of Nebraska at Omaha (May, 1986)

### **Honors/Awards:**

Chancellor's Award for Excellence in Teaching in the Watson School of Education: University of North Carolina at Wilmington. 2003.

Outstanding University Faculty, Watson School of Education, 1998-1999 Academic Year: University of North Carolina at Wilmington.

Commonwealth Dissertation Fellowship, 1990-1991: Commonwealth Center for Literary and Cultural Change, Charlottesville, Virginia.

DuPont Fellowship: University of Virginia, 1988-1990

Elton S. Carter Award: Best Annual Master's Thesis, University of Nebraska at Omaha, 1989

Presidential Fellowship: University of Nebraska System (Lincoln and Omaha Campuses), 1987-1988

### **Representative Teaching Activities: Courses Taught:**

Introductory Sociology  
Sociology of Culture (Undergrad & Graduate-Level) Sociology of Deviant Behavior

Sociology of Art (Undergrad & Graduate-Level)	Sociology of Literature
Sociology of Religion	Sociology of Education
Social Theory (Undergrad & Graduate Level)	Research in Education (Grad Level)

**Administrative Experience:**

August 2004-Present: Associate Chair, Department of Sociology and Criminal Justice, University of North Carolina at Wilmington  
August 1999-January 2004: Program Coordinator, Master's in School Administration Program, Watson School of Education, University of North Carolina at Wilmington

**Teaching Experience:**

January 2004-Present: Associate Professor, Department of Sociology and Criminal Justice, University of North Carolina at Wilmington  
January 2001- January 2004: Associate Professor, Watson School of Education, University of North Carolina at Wilmington  
January 1998-December 2000: Assistant Professor, Watson School of Education, University of North Carolina at Wilmington  
August 1995-December 1997: Assistant Professor of Sociology, Western Illinois University  
August 1991-July 1995: Assistant Professor of Sociology, Boston University  
August 1989-July 1990: Instructor of Sociology, University of Virginia  
August 1988-July 1989: Teaching Assistant in Sociology, University of Virginia  
July 1988-August 1988: Instructor of Sociology, University of Nebraska at Omaha  
August 1986-July 1988: Teaching Assistant in Sociology, University of Nebraska at Omaha

During my tenure in the Watson School of Education I served as chair on nearly 30 master's thesis committees. I have also chaired a thesis committee for the MALS/GLS program, am chairing another MALS thesis currently, and will be chairing another in the Spring 2007 semester. I was also the chair for a doctoral dissertation in the Department of Sociology at Boston University.

**RESEARCH**

My research has largely focused on the area of the sociology of culture and, more recently, the sociology of education. I have published *A Disease of One's Own: Psychotherapy, Addiction, and the Emergence of Co-Dependency* (New Brunswick, NJ: Transaction Publishers, 1996, 1998). In addition, I have published journal articles, book chapters, and books reviews in such venues as *Society*, *Sociological Quarterly*, and others. I have also conducted extensive survey research on school culture, and safe and drug-free schools, for the New Hanover, Onslow, and Pender County school districts and written numerous technical reports summarizing the results of those research projects. I have also presented scholarly research on nearly thirty occasions to various professional organizations.

**SERVICE**

In the Watson School of Education (January 1998 – January 2004), I coordinated the Master's in School Administration program, a task that involved numerous service-related work to the School of Education, as well as to local and regional school districts and to the state. Since August of 2004, I have served as associate chair of the Department of Sociology and Criminal Justice. During all of these years, I have served, as well, on a variety of department, college, and university committees, as well as serving twice as a Faculty Senator. Other service positions have included the University Budget; the Curriculum Committee for the college of education; the University Bookstore Committee; and so on. I am currently a Faculty Senator, and the Chair of the Department's Budget Committee. I am also a member of the Southern Sociological Society, the Society for the Study of Social Problems, and the American Sociological Association. I have reviewed articles and manuscripts for, *inter alia*, ***Social Problems***, ***The Journal of Contemporary Ethnography***, ***Sociological Quarterly*** and for McGraw-Hill, Wadsworth, and other publishers.

**DARRELL D. IRWIN**

Dept. of Sociology and Criminal Justice  
*University of North Carolina Wilmington*  
Wilmington, NC 28403-5978

Office: 910-962-7420 Cell: 910-471-9151  
Fax: 910-962-7385 Email: [irwind@uncw.edu](mailto:irwind@uncw.edu)

---

**SUMMARY OF QUALIFICATIONS**

Justice expert with 18 years of analytical and policy skills

- Analyst, author of white papers, researcher.
- Grant and project manager.
- Drafting legislation.
- Adept at working with multiple cultures in modern and developing world.

**EDUCATION**

*Loyola University Chicago*

M.A. in Sociology: May, 1988; Ph.D. in Sociology: May, 1994

*University of Florida*

B.A. in Sociology, B.A. Certificate in Latin American Studies: March, 1980

**Language Training:** *University of Paris VII* - Certificate in Intensive French 1984

*Portland State University* - Serbo-Croatian in Yugoslavia, 1983-84

*Universidad de Los Andes* - Certificate Intensive Spanish in Colombia 1976

*Beijing Language and Culture University* Mandarin 2006.

**PROFESSIONAL CAREER EXPERIENCE**

1997– Present *University of North Carolina at Wilmington* - **Associate Professor of Criminal Justice**

- Duties: Teach courses in Criminal Justice, Sociology and Masters of Liberal Arts. Supervise 4-6 researchers on grants; fiscal and budgetary responsibilities. Work with grant agencies and develop research agreements with international/federal/state law enforcement agencies. Publish scholarly results; conduct workshops and presentations. Team Leader for China Summer Abroad in Beijing, China.

1996-1997 **National Development and Research Institutes, Inc., New York**

**Post-Doc Fellow, Institute for Special Populations.**

**National Institute on Drug Abuse Post-Doc Fellowship**

- Duties: Awarded post-doc support for advanced drug abuse research at World Trade Center NYC think tank. Assisted senior researchers. Conducted field research projects that led to publication. Demonstrated analyst abilities. Facilitated training modules for graduate students.

- 1994 - 1996 *St. John's University, Dept. of Sociology, New York*  
**Visiting Assistant Professor**
- Duties: Taught graduate and undergraduate courses in Sociology and Criminology. Supervised graduate student assistants. Conducted field research projects that led to publication.
- 1993-1994 *University of Wisconsin – Parkside, Dept. of Sociology*  
**Instructor**
- Duties: Taught Sociology, Statistics and Criminology.
- 1985-93 *Loyola University of Chicago, Dept. of Sociology*  
**Teaching Fellow and Research Assistant**
- Duties: Taught Sociology and Criminology. Evaluated judges for Illinois Supreme Court. Firm grasp of survey design, coding and data input and software applications.
- 1988-89 *University of Wisconsin - Superior, Dept. of Sociology*  
**Instructor**
- Duties: Taught Sociology and Criminology.
- 1987 *City of Chicago, Department of Human Services,*  
*Office of Legislative Liaison*  
**Program Coordinator**
- Duties: Assisted administrators in tracking social service legislation at the state and national levels. Authored white papers on workfare and homelessness.
- 1984 *American Broadcasting Company, XIV Winter Olympic Games, Sarajevo, Yugoslavia*  
**Production Assistant**
- Duties: Production and translation on site at the XIV Winter Olympics.
- 1982-83 *Miami-Dade Community College, Miami*  
**Counselor and Teacher**
- Duties: Counseled students and taught English to Cuban and Haitian refugees. Supervised other counselors.
- 1981 *Florida Department of Health and Rehabilitative Services, Belle Glade, Florida*  
**Social Worker**
- Duties: Counseled and awarded aid to refugees. Liaison with community agencies.

#### **GRANTS AWARDED**

Ford Foundation “Feasibility Study for Four Professional Masters Degrees” \$28,000.  
Proposal writer. 2004.

Governor’s Crime Commission. “A Study of the Effectiveness of the Wilmington

Gun Violence Reduction Project”. Principle Investigator. Funded at \$72,882. 2002.

Pritzker Cousin’s Foundation. “A Study of the Effectiveness of the Wilmington Gun Violence Reduction Project”. Principle Investigator. Funded at \$14,877. 2000.

New Hanover County Commission. “A Study of the Effectiveness of the Wilmington Gun Violence Reduction Project”. Principle Investigator. Funded at \$4,450. 2000.

Bureau of Justice Assistance; U.S. Department of Justice. “The Wilmington Gun Violence Reduction Project: Identification, Prosecution, and Monitoring of the Chronic Violent Offender”. Principle Investigator. Funded at \$29,984. 1999.

Faculty Summer Research Initiative. “Drug Court Treatment Among Sentenced Felony Drug Offenders”. Funded at \$3,500. Summer, 1998.

### **DISTINCTION IN SERVICE**

Editorial Advisory Board. Annual Editions: Drugs, Society and Behavior Publication series for the classroom. 1999-present.

Editorial Board. Journal of Crime and Justice. Journal of the Midwestern Criminal Justice Association. 2000-2002.

Editorial Board. International Journal of Drug Testing. 2003 – present.

Academy of Criminal Justice Sciences. Program Committee. 2002 -2003.

U.S. Department of State’s International Criminal Investigative Training Assistance Program (ICITAP). UNCW Staff providing law enforcement training and development assistance to foreign law enforcement agencies in new, emerging and existing democracies and in peacekeeping environments.

### **FELLOWSHIPS AND AWARDS**

Graduate Student Travel Fellowship - Awarded by the National Science Foundation and Law and Society Association for travel to the 1991 Law and Society Meeting, *University of Amsterdam*, Netherlands.

Teaching Fellowship - *Loyola University Graduate School*. Awarded for 1989-90 academic year.

Awarded the “First Annual Chancellor’s Outstanding Faculty Award Year 2000” in the Department of Sociology, Anthropology and Criminal Justice.

Awarded travel costs from UNCW Office of International Programs to attend International Perspectives on Crime, Justice and Public Order in 2000 and 2002; in 2005 the 11<sup>th</sup> United Nations Congress on Crime and Criminal Justice, Bangkok, Thailand.

White House Scholarship for the US Department of Health and Human Services, SAMHSA. 7<sup>th</sup> Annual Symposium on Faith and Community - Based Organizations and CADCA Leadership Conference. Washington, January, 2004

## **PUBLICATIONS**

**Book** Irwin, Darrell D. *Case Studies of the Use of Drug Testing in Corporations: Deviance in Large Organizations*. San Francisco: Mellen Research University Press, 1991.

### **Selected Reviews and Articles**

Irwin, Darrell D. "Guns and Violence: The English Experience" *International Criminal Justice Review* Vol. 16. (2) September 2006.

Irwin, Darrell D. "Identifying the Process of Drug Court Treatment in Small Towns and Mid-Sized Cities" Journal of Crime and Justice Vol. 25 (1) 63-80, 2002.

Irwin, Darrell D. "Alternatives to Delinquency in Harlem: A Study of Faith-Based Community Mentoring" The Justice Professional 15, (1) 1-8, 2002.

Irwin, Darrell D. "Alcohol Recovery Homes (Halfway Houses)". Vol. IV– Encyclopedia of Criminology and Deviant Behavior. Taylor & Francis: 2000.

Irwin, Darrell D., Gloria George-Davis and Clyde McDaniel "The Black Church and Youth Socialization Through Community Mentoring" Chapter in *Twenty-First Century African-American Social Thought*. Harcourt: 2000.

Irwin, Darrell D. "The Straight Edge Subculture: Examining the Youths' Drug-Free Way" Journal of Drug Issues 29 (2) 365-380, 1999.

Irwin, Darrell D. "Under the Influence." Journal of Studies on Alcohol 57 (3) 1996.

### **Government and Research Reports**

Wilmington Fear of Crime Survey – 1999, 2001, 2003, 2005  
[http://www.wilmingtonnc.gov/Portals/0/crimesurvey\\_stats.pdf](http://www.wilmingtonnc.gov/Portals/0/crimesurvey_stats.pdf)

Governor's Crime Commission. "Final Report - A Study of the Effectiveness of the Wilmington Gun Violence Reduction Project". 2002.

Abyssinian Baptist Church *The Blue Nile Rights of Passage: Community Action and Youth Socialization*. New York, NY. 2000.

### **PROFESSIONAL MEMBERSHIPS**

American Sociological Association  
American Society of Criminology  
Academy of Criminal Justice Sciences

### **REFERENCES**

Provided upon request.

Dr. Darrell D. Irwin is an Associate Professor of Criminal Justice at the University of North Carolina Wilmington. Dr. Irwin received his B.A. from the University of Florida and his Ph.D. from Loyola University Chicago. Dr. Irwin's research interests include the linkage between drug use and gun violence, as well as youth subcultures, drug courts and faith-based programs. He also has been involved in international justice support programs such as the U.S. Department of State's International Criminal Investigative Training Assistance Program (ICITAP), teaching U.S. criminal justice approaches to Polish National Police officers. He presented crime prevention research at the 11<sup>th</sup> United Nations Congress on Criminal Justice and Crime Prevention.

His article, "Alternatives to Delinquency in Harlem: A Study of Faith-Based Community Mentoring," was published in *The Justice Professional*, Volume 15, Issue 1 Spring 2002 pages 29-36. The article discusses the use of mentoring in a faith-based setting. Based upon this research, he was an invited speaker at the US Department of Health and Human Services – SAMHSA's 6<sup>th</sup> Annual Symposium on Faith and Community - Based Organizations in August 2002. He has also briefed Congressional staffers on the subject. He has also published in *The Justice Professional*; *The Journal of Drug Issues*; *International Criminal Justice Review*; and *The Journal of Crime and Justice*.

Dr. Irwin was the principle investigator for three grants that began in December 1999 and completed in June of 2002, working closely with law enforcement agencies such as the US Attorney's Office, the ATF and Wilmington Police Department. He successfully obtained grants from the US Department of Justice, the North Carolina Governors Crime Commission and the Pritzker Cousins' Foundation. All of these projects were associated with the study of gun violence. Results from the study found drugs, especially drug sales, are linked to the area's violence. Ten UNCW students were hired by the grants. He has served on thesis committees while a faculty member at St. John's University. Dr. Irwin was also a consultant on a five million dollar grant on Drug courts with the Research Triangle Institute.

Currently, he teaches criminal justice courses and a course on globalization at the University of North Carolina Wilmington.

## VITA

**NAME:** Stephen John McNamee

**ADDRESS:** College of Arts and Sciences  
University of North Carolina Wilmington  
Wilmington, North Carolina 28403

Office: (910) 962-3660  
Home: (910) 763-2160  
FAX: (910) 962-3114  
E-Mail: MCNAMEE@UNCWIL.EDU

**PERSONAL:** Born: 12 October, 1950, Camden, New Jersey, USA

### EDUCATION:

Ph.D. Sociology, University of Illinois, Urbana-Champaign, 1980  
M.A. Sociology, University of Illinois, Urbana-Champaign, 1975  
A.B. Sociology, Rutgers University, Camden, New Jersey, 1973 *magna cum laude*

### POSITIONS:

2003-present	Associate Dean, College of Arts and Sciences
Spring, 2003	Visiting Professor, University of Wales, Swansea
1991 - 1996	Professor and Chair, University of North Carolina at Wilmington
1991- present	Professor, University of North Carolina at Wilmington
1990 - 1991	Associate Professor and Chair, University of North Carolina at Wilmington
1987 - 1989	Associate Professor, University of North Carolina at Wilmington
1984 - 1987	Assistant Professor, University of North Carolina at Wilmington
1980 - 1984	Assistant Professor, University of Dayton
1978 - 1980	Instructor, University of Dayton

## **AWARDS AND RECOGNITIONS**

President-Elect, North Carolina Sociological Association, 2006

UNC Board of Governors Teaching Award for Excellence, 2001 (highest UNCW teaching award; one UNCW Faculty Member selected each year)

UNCW Distinguished Teaching Professorship Award, 2000 (three UNCW faculty selected each year)

Alpha Kappa Delta National Sociological Honor Society

Phi Kappa Phi Honor Society (UNCW)

Geisert Dissertation Fellow (University of Illinois)

Athenaeum Honor Society (Rutgers University)

## **REPRESENTATIVE TEACHING ACTIVITY**

### **A. Courses Taught**

Freshman Interdisciplinary Honors Seminar  
Introduction to Sociology  
Modern Social Problems  
Social Classes  
Social Theory  
Sociology of Work and Occupations  
Organizations in Modern Society  
Social Change

### **B. Individualized Instruction**

In addition to classroom instruction, I have also worked extensively with students one-on-one. I have directed over 70 individual undergraduate research projects. I have also served as an outside member of an M.A. sociology thesis committee at

East Carolina University and I am currently supervising a Masters in Liberal Studies project. Whenever possible, I have involved students in my research. I have twice co-authored journal articles with undergraduate students.

#### **E. Study Abroad Instruction**

I was the Resident Director of the Spring 2003 Semester Study Abroad Program at the University of Wales at Swansea in conjunction with the Honors Scholars Program and International Programs. I also completed a two week faculty exchange at University of Surrey at Roehampton , London, England, Fall, 1994. During this exchange, I taught Sociological Theory and guest lectured in several other classes

### **II. RESEARCH**

My primary research interests have been in the areas of stratification, work and occupations, organizations, and theory. With Robert K. Miller, Jr., I co-authored *The Meritocracy Myth* (Roman & Littlefield Publishers, Inc., Lanham, Maryland, 2004) and co-edited *Inheritance and Wealth in America* ( New York: Plenum, 1998). In addition, I have over 25 other professional publications including journal articles, book chapters, and book reviews. Among others, I have published articles in journals such as *Social Problems, Work and Occupations, Knowledge, Organization Studies, Sociological Inquiry, Journal of Studies in International Education, The American Sociologist, and Sociological Focus*.

### **III. SERVICE**

Professionally, I am currently serving as President-Elect of the North Carolina Sociological Society and previously served as a member of its Executive Council. I have been a manuscript reviewer for numerous journals, book presses, as well as a grant reviewer for the National Science Foundation. I have served on numerous universities committees including the University Reappointment, Promotion and Tenure Committee, Enrollment Management Committee, Internationalization Task Force, Faculty Senate, Faculty Assembly, University Planning and Quality Council. I have also served on numerous department committees including Publication Committee, Budget Committee, Policy and Planning Committee, Equipment Committee, Post-Tenure Review Committee, and Faculty Advisor to the Sociology Club. I have

also been active in community service, serving on several local boards including Family Services of the Lower Cape Fear, Hadden Hall Housing Board, United Way Disaster Allocations Committee, and The New Hanover County Department of Social Services Jobs Committee. In addition, I have been interviewed on numerous occasions by TV, radio, and newspaper media on various topics related to contemporary social issues.

Stephen J. McNamee is Associate Dean in the College of Arts and Sciences and Professor of Sociology at the University of North Carolina at Wilmington. He received his A.B. degree from Rutgers University, Camden and M.A. and Ph.D. degrees from the University of Illinois, Urbana-Champaign. He is a recipient of the University of North Carolina at Wilmington distinguished Teaching Professorship Award and the University of North Carolina Board of Governors Teaching Award. He has directed over 70 individual undergraduate research projects and has twice published journal articles with undergraduate students. He has also served as an outside member of an M.A. sociology thesis committee at East Carolina University and is currently supervising a Masters in Liberal Studies project. He is the co-author with Dr. Robert K. Miller, Jr. of *The Meritocracy Myth* and co-editor with Dr. Robert K. Miller, Jr. of *Inheritance and Wealth in America*. In addition, he has published over 25 other professional publications in the areas of inequality, theory, organizations and the labor force. Among others, he has published articles in journals such as *Social Problems*, *Work and Occupations*, *Knowledge, Organization Studies*, *Sociological Inquiry*, *Journal of Studies in International Education*, *The American Sociologist*, and *Sociological Focus*. A former department chair, he has been a visiting professor at the University of Wales, Swansea and the University of Surrey at Roehampton, London.

## **Diane E. Levy**

### Office Address:

Department of Sociology  
University of North Carolina at Wilmington  
Wilmington NC 28403

Phone: 910-962-3430  
e-mail: [levyd@uncw.edu](mailto:levyd@uncw.edu)

### EDUCATION

Ph.D.	Temple University, Philadelphia Pa	Sociology, 1978
M.A.	Temple University	Sociology, 1973
A.B.	Temple University (Magna Cum Laude)	Sociology, 1971

### AREAS OF INTEREST IN SOCIOLOGY

Gender Stratification	Tourism and Travel
Family	Sociology of Women and Work
Occupations and Labor Force	Women and Development

### PROFESSIONAL HISTORY

#### Positions Held

- Professor of Sociology, University of North Carolina at Wilmington, August 1990-present
- Interim Chair, Department of Sociology and Criminal Justice, July 2004-June 2005
- Director, Honors Scholars Program, UNCW April 1994-August 1999
- Associate Professor of Sociology, UNCW, August 1984-July 1990
- Assistant Professor of Sociology, UNCW, August 1978-June 1984 (on leave 1981-2)
- Lecturer, University of Maryland, European Division,  
August 1981-June 1982; June-August 1983
- Lecturer of Sociology, UNCW August 1977-June 1978
- Visiting Instructor of Sociology, Temple University, September 1976-June 1977
- Graduate Teaching Assistant, Temple University,  
Department of Sociology, 1971-3; 1975-6

### INTERNATIONAL TEACHING EXPERIENCE

- Resident Director and Instructor, University of Wales Swansea, Spring 2004
- Visiting Scholar at Roehampton Institute London, Educational Development Centre, March, 1999
- Visiting Exchange Professor, Roehampton Institute London, March 1994
- Honors Course in London, Spring 1996
- Summer School in Barbados, 1992, 1991, and 1987
- Lecturer, University of Maryland, European Division, August 1981-June 1982; June-August 1983

## COURSES TAUGHT

### Sociology:

Gender and Society  
Sociology of the Family  
Introduction to Sociology  
Sociology of Work and Occupations  
Gender and Family in the Caribbean  
Sociology in Contemporary Life  
Sociology of Travel and Tourism  
Formal and complex Organizations  
Social Problems  
Social Psychology

### Honors Courses Taught:

Honors Interdisciplinary Seminar  
Honors Enrichment Seminars:  
Wilmington Culture  
London: City as Text

### Human-Animal Relationships:

Social, Legal, and Ethical  
Issues (team taught with  
lawyer and veterinarian)

## HONORS, AWARDS, AND GRANTS

- Distinguished Teaching Professorship, UNCW, Awarded September 1993
- Award from Center for Teaching Excellence for enhancing the teaching environment, 1999 and 2001
- Program Grants Received:
  - Polish Police Internships—Department of Justice Grant for the Department of Sociology and Criminal Justice for \$10,000 to support the visit of three delegations of Polish police officers to learn about policing in a democracy. 2005.
  - “A Lecture Series in Activism for the Honors Program”, UNCW, Funded by the Portz Grant of the National Collegiate Honors Council, 1996
  - “Creation of an Honors Cybrary” (with Patricia Turrisi) Funded by the Portz Grant of the National Collegiate Honors Council, 1999
- Research Fellowship Received:  
Organization of American States, Research Fellowship in Barbados, June-August, 1987

## PAPERS AND PRESENTATIONS

### Publications:

Levy, Diane. 2003  
“Faculty Culture and Online Teaching: Dancing in the Middle” pp.29-33 in *Swimming in the Electronic Current: Elements of an Online Course*. Patricia Turrisi, ed. UNCW: The Publishing Laboratory.

Levy, Diane E. 2000  
“The Shock of the Strange, the Shock of the Familiar: Learning from Study Abroad” in the *Journal of the National Collegiate Honors Council*, (Spring/Summer): 75-83

Levy, Diane E. 1993.  
“Reply to Deagan on Family Ritual” *Teaching Sociology* 21(April): 198.

- Levy, Diane E. 1992  
“Teaching Family Ritual: Sunday, Sausage, and Solidarity” *Teaching Sociology* 20 (Oct):311-313.
- Levy, Diane E. and Patricia B. Lerch. 1991.  
“Tourism as a Factor in Development: Implications for Gender and Work in Barbados” *Gender & Society* 5,1 (March): 67-85.
- Dixon, Richard D., Roger Lowery, Diane E, Levy and Kenneth Ferraro. 1991.  
“Self-Interest and Public Opinion Toward Smoking Policies: A Replication and Extension” *Public Opinion Quarterly* 55: 241-254.
- Dixon, Richard D., Roger Lowery, Diane E, Levy and Kenneth Ferraro. 1991.  
“Smoking: Self-Interest and Social Policy” *UNCW Discovery* 2,1 (Spring): 7-10.
- Levy, Diane E., Gary L. Faulkner, and Renee Steffensmeier. 1991.  
“Military Wives: A Re-Assessment of the Two-Person Career Model” *Psychological Reports* 68: 307-13.
- Lerch, Patricia B. and Diane E. Levy. 1990.  
“A Solid Foundation: Household Arrangements and the Status of Women in the Tourist Industry in Barbados, West Indies” *Human Organization* 49, 4 (Winter): 355-63.
- Dixon, Richard D., Diane E. Levy, and Roger Lowery. 1988.  
“Asking the Born-Again Question” *Review of Religious Research* (Sept):33-39.  
---Reply to Schumm and Silliman”, 1990. *Review of Religious Research* 31, 4(June) 413-15.
- Dixon, Richard D. and Diane E. Levy. 1985.  
“Sex of Children: A Community Analysis of Preferences and Predetermination Attitudes” *Sociological Quarterly* 26,2 (Summer):251-71.
- Levy, Diane E., Gary L. Faulkner, and Richard D. Dixon. 1984.  
“Work and Family Interaction: The Dual Career Family of the Flight Attendant” *Humboldt Journal of Social Relations* 11 (Spring/Summer): 67-86.
- Levy, Diane E., Robert K. Miller, Jr., and Cecil L. Willis. 1984.  
“Social and Economic Macrostructural Antecedents of Fertility” *Sociological Inquiry* 54: 26-43.
- Miller, Diane Levy. 1982  
“Ritual in the Work of Durkheim and Goffman: The Link Between the Macro and the Micro” *Humanity and Society* 6 (May): 122-134.
- Miller, Diane Levy. 1981.  
“Working Mother’s Double Bind” *The Humanist Sociologist* 6 (June): 9-11
- Miller, Diane Levy. 1981.  
“Marry Me –Fly Free: The Dual Career Family of the Flight Attendant” pp. 117-122 in Bullard, et al. eds., *Sociological Research Symposium XI, Proceedings of the annual AKD Research Symposium*, Blacksburg, VA.
- Hostetler, John A. with Diane Levy and Eric Michaels. 1974.  
Chapter 3, “The Oneida Community in *Communitarian Societies*. NY: Holt, Rinehart and Winston.

### **Selected Papers Presented at Professional Meetings**

“Issues of Tourism and Gender Equity” at the 3<sup>rd</sup> International Conference on Gender and Equity Issues: Humanistic Considerations for the 21<sup>st</sup> Century” Bangkok, Thailand, January, 2001.

“International Faculty Exchanges and Undergraduate Education in Sociology” Roundtable presentation at American Sociological Association, Toronto, Canada, 1997.

“Stranger in Academe: An International Teaching Exchange Experience” at the XXXII meeting of the International Institute of Sociology, Trieste, Italy, July, 1995.

“Women Hoteliers in Barbados: Tradition, Development and Social Change” at the American Sociological Association meetings, Miami, August, 1993

#### RECENT PROFESSIONAL ACTIVITY

##### **Contributions to Professional Journals and Publications**

Invited member of Editorial Board, *Gender & Society* 1993-1997

Reviewed articles for the following journals:

*Gender & Society*

*Work and Occupations*

*Healthcare for Women International*

*Sex Roles: A Journal of Research*

Teaching Sociology

*American Sociological Review*

Text reviewer for publishers: Addison Wesley, McGraw-Hill, Wadsworth, Mayfield and others

##### **Professional Presentations and Activity**

Wrote student study guide for Online Learning Center for 3<sup>rd</sup> edition of *Public and Private Families* by Cherlin, including multiple choice, true-false quiz items and internet exercises, 2001.

#### REPRESENTATIVE UNIVERSITY SERVICE (UNCW)

Faculty Senate University Advancement Committee—Chair 2005-6

Summer School Advisory Committee 2003-present

Chancellor’s Task Force on Violence Prevention, 2004

SACS Self-Study Steering Committee, 1999-2002

Chair, Section VI, Administrative Services

President, UNCW Chapter of Phi Kappa Phi, National Junior-Senior Interdisciplinary Honors Society, 2000-2004

Faculty Mentor, 1999-2001

Faculty Representative to Albert Schweitzer International Awards Board 1996-8

General College Advisor 1981-89; 1994-99.

##### **Elected Committees:**

Hearings Panel, elected 2000

University Committee on Reappointment, Tenure and Promotion, 1989-92; 1993-5

University Senate 1983-5; Steering committee 1983-4

Faculty Professional Relations committee 1980-1

#### SELECTED COMMUNITY SERVICE

##### **Boards of Directors**

Girls Choir of Wilmington, 1997-2002

Domestic Violence Shelter and Services, Wilmington NC 1982-1989

YWCA, Wilmington NC 1978-81; 1982-86

Selected Public Lectures and Seminars

Member, UNCW Speakers Bureau

“Feminism and Judaism” to Temple of Israel, January 2003

“Women, Work and Family” to Professional Verbatim Court Reporters Meeting, Wilmington NC  
September 1999.

**Lynne L. Snowden, Ph.D.**

1120

Shelby Court  
Wilmington,  
North Carolina 28409  
EMAIL -

Snowdenl@UNCW.EDU

---

Phone (910)962-3838

Fax (910)962-7385

Home (910)784-1698

**EDUCATION**

**Degree**

<u>Institution</u>	<u>Field of Concentration</u>	<u>Years</u>	<u>Granted</u>
Univ. of Delaware	Sociology	1990	Ph.D.
Univ. Of Delaware	Sociology	1987	M.A.
Univ. of Delaware	Human Resources Soc. Minor	1985	B.S.

**PROFESSIONAL HISTORY**

<u>Position</u>	<u>Institution</u>	<u>Dates</u>
Assoc. Professor	Univ. of North Carolina-Wilm.	1998-Pr
Asst. Professor	Univ. of North Carolina-Wilm.	1993-97
Instructor	West Chester University	1992-93
Asst. Professor	Duquesne University	1991-92
Visiting Professor	Franklin & Marshall Coll.	1990-91
Adj. Professor	Neumann College	1989-91
Instructor	University of Delaware	1987-89
Teaching Asst.	University of Delaware	1986-88
Res. Associate	Disaster Research Center University of Delaware	1985-86 1988-89
ESL Instructor	La Comunidad Hispana	1986-90

**Courses Taught at UNCW**

CRJ 495 Latinos and the Criminal Justice System  
CRJ 495 Counterterrorism and Homeland Security  
CRJ 420 Collective Violence (Terrorism, Cults, & Hate Groups)  
CRJ 490 Criminal Justice Practicum  
CRJ 490L Criminal Justice Practicum Lab  
CRJ 110 Issues of Criminal Justice  
CRJ 105 Introduction to Criminal Justice (& Learning Community)  
CRJ 315 Victimology  
CRJ 450 Criminal Justice Theory  
SOC 390 Applied Sociology Seminar  
SOC 496 Practicum in Applied Sociology

SOC 498 Internship in Applied Sociology  
SOC 326 Collective Behavior/Social Movements  
Hon 210 The Criminal Justice System in Crisis  
NSG 530 Migrant Farmworker Health Care

**REFEREED ARTICLES & BOOK CHAPTERS**

Snowden, Lynne L. "Hispanics and Latinos in the US Criminal Justice System" in The Red Blooded American Criminal Justice System.[Book Chapter] (Under Contract with Prentice Hall Publishing Co.)

Snowden, Lynne L. & Reid C. Toth. (2005) "Homeland Security's Albatross: Indefinite Detention" in the Journal of Social and Ecological Boundaries, Winter 2005-2006(1.2)29-52.

Snowden, Lynne L. (2003) "How likely are Terrorists to Use a Nuclear Strategy" in the American Behavioral Scientist, February, 2003. Volume 46, Number 6. Thousand Oaks: Sage Publications, Pg. 699-714.

Snowden, Lynne L. (2002) "The Impact of the 1996 Benefit Provisions on Migrant Farm Worker Recovery from the Hurricane Floyd Disaster" in In Defense of the Alien, Volume XXIV. Staten Island, NY: Center for Migration Studies, Pg. 190-204.

Snowden, Lynne & T. Fuss. (2000) "A Costly Mistake: Inadequate Background Investigations" in The Justice Professional, Winter/Spring, 2000-2001, Vol. 13, Number 4 Harwood Academic publishers, Pg. 359-375).

Fuss, Tim & Lynne L. Snowden. "Studying Sexual Harassment in the Law Enforcement Workplace" in The Police Chief. June, 2000, Pg. 65-72.

Snowden, Lynne L. "Can We Control Illegal Immigration? Evaluating Methods of Immigration Law Enforcement" in Security Journal, Volume 11(Winter,1998) Elsevier Publishers, Pg. 171-177.

Snowden, Lynne L. (1998) "The European Enforcement Experience" in Regulation of Migration :International Experiences, A. Bocker,K. Groenendijk, T. Havinga, & P. Minderhoud, EDS. Amsterdam: Het Spinhuis Publishers. Pg. 159-173.

Tim Fuss, Brendan McSheehy, and Lynne L. Snowden,(1998). "Under Investigation: Background Checks in North Carolina Police Departments", Police Chief, Vol. LXV (April), Number 4, Pg. 169-172.

Snowden, Lynne L. (1998) "Violence in U.S. and Western European Refugee Detention Centers" in In Defense of the Alien, Volume XX; L. Tomasi, Ed. New York: Center for Migration Studies. Pg. 160-176.

Snowden, Lynne L. (1993) "Asylum Seekers and Illegal Labor in Southern Italy and Sicily" in The Journal of Refugee Studies, Oxford Univ. Press, Vol. 6, No. 2, pg. 158 - 170.

Snowden, Lynne L. (1992) "Social Policy as a Precipitating Event: The Case of German Descent Migration and the Berlin Wall" in The Quarterly Journal of Ideology. Shreveport, Louisiana: Louisiana State University. Vol. 15, Fall, No.1-2, pg.63-80.

Snowden, Lynne L. (1990) "Collective vs. Mass Behavior: A Conceptual Framework for Temporary and Permanent Migration in Western Europe and the United States" in International Migration Review, Fall, Volume xxiv, No. 3, pg. 577 - 590.

**Refereed Books, Manuscripts Under Contract, Other Books.**

Barkan, Steven & Lynne L. Snowden, (Exp. 2006) Collective Violence, 2<sup>nd</sup> Edition. (Under contract with Sloan Publishing, Cornwall-on-the-Hudson, NY.)

Snowden, Lynne & Bradley C. Whitsel. (2005) Terrorism: Research, Readings, & Realities. Upper Saddle River, NJ: Pearson/Prentice Hall.

Snowden, Lynne L. (2003) Preventing Terrorism, 2<sup>nd</sup> Ed. To Be Published in August, 2003, Original Works Press, Xanadu Publications, Proquest Corporation.

Snowden, Lynne L. (2002) Preventing Terrorism. North Chelmsford, MA: Erudition Books, Pub.

Barkan, Steven & Lynne L. Snowden, (2001) Collective Violence. Saddle River, NJ: Allyn & Bacon, Publishers.

**OTHER PUBLICATIONS**

Snowden, Lynne (Exp. 2006) "Preventing Terrorism: Teaching Local Law Enforcement Agencies The Officer Terrorist Watch System" in Proceedings (in process of publication) by the Turkish National Police, Istanbul, Turkey.

Snowden, Lynne, Matheu Becker, Ashley Lorenz, & Keat Waddell (2005) Instructor's Manual For Terrorism: Research, Readings, & Realities, Lynne Snowden & Bradley C. Whitsel. Upper Saddle River, NJ: Pearson/Prentice Hall.

Fuss, Timothy and Lynne L. Snowden (2004) "The Importance of Background Investigations" in Law and Order, March, 2004 Pg. 58-63.

Snowden, Lynne L. (2004) "Latinos and Licenses: Encouraging Latino Literacy" in The National Forum, Vol. 84, No.2, Pg. 39-41.

Snowden, Lynne L. (June, 2001) Best Practices Manual for the City/County Youth Violence Intervention Task Force. Wilmington, NC: The Wilmington Police Department, The New Hanover County Sheriff's Dept. & The governor's Crime Commission of the NC Dept. of Crime Control & Public Safety.

Tim Fuss, Brendan McSheehy, and Lynne L. Snowden,(1998). "Do Background Investigations Matter?, The Investigator. Newsletter of the National Association of Background Investigators. Vol. 1, Number 1, Pg. 1-3.

Snowden, Lynne L. (1991) "The Impact of Asylum Policy in the Netherlands, France, and West Germany" in Migration World. Volume XIX, No. 3, Pg. 14-19.

**SUSAN BULLERS**

October, 2006

**University of North Carolina at Wilmington**

Director, Women's Studies and Resource Center  
Associate Professor, Department of Sociology and Criminal Justice  
601 S. College Road  
Wilmington, North Carolina 28403-3297  
(910) 962-7150  
FAX (910) 962-4236  
BullersS@uncw.edu

**Education**

- 1994 Ph.D. in Sociology from the State University of New York at Buffalo.  
Dissertation: "Women's Employment and Perceived Control."
- 1990 MA in Sociology from the University of Colorado-Denver.  
Thesis: "Gender, Kinship Ties, and Social Network Density."
- 1989 BA in Sociology from the University of Colorado-Denver, summa cum  
laude. Honors Thesis: "Spouse Abuse: An Exchange Theory Approach."

**Professional Positions Held**

- 2005-present Director of Women's Studies and Resource Center, UNCW
- 2001-present Associate Professor of Sociology, UNCW
- 1995-2001 Assistant Professor of Sociology, UNCW
- 1994-1995 Post-Doctoral Researcher under Dr. Marcia Russell on the Stress  
and Alcohol Study, at the Research Institute on Addictions, Buffalo,  
NY. Studied causal direction in social networks and alcohol use  
using structural equation modeling.

**Teaching**

**Courses taught**

- SOC 105 Introduction to Sociology  
SOC 301 Data Analysis for the Social Sciences  
SOC 337 Medical Sociology

SOC 345 Social Psychology  
SOC 400 Statistics for the Social Sciences

### **Other Teaching Activities, Awards and Grants**

Supervised or served on committees for numerous Senior Research, Directed Independent Study, Honors and Master's theses projects from Sociology and Criminal Justice, Psychology and Anthropology

2001 & 1999 Received recognition form the Center for Teaching Excellence for Making a Significant Contribution to the Teaching Environment.

1999 Received a Summer Teaching Initiative Award for \$1500.00. Project entitled "Student-based Interactive Course Format Development"

1998 Accepted into the UNCW Graduate Faculty (renewed in 2005).

1997-2005 Recognized as a faculty member who had a significant impact on undergraduate education

### **Publications**

#### **Journal Articles**

of Bullers, Susan. 2006. "Effects of Blood-Alcohol Concentration (BAC) Feedback BAC Estimates over Time." *Journal of Alcohol and Drug Education*. 50 no.2: 66-82.

Bullers, Susan. 2005. "Environmental Stressors, Perceived Control and Health: The Case of Residents Near Large Scale Hog Farms in Eastern North Carolina." *Human Ecology*, February 2005

Bullers, Susan and Carol Prescott. 2001. "The Independent Contributions of Genetics, Shared Family Environment, and Adult Roles to Adult Perceived Control." *Sociological Inquiry*. 71 no. 2:145-163.

Bullers, Susan, M. Lynne Cooper, and Marcia Russell. 2001. "Social Network Drinking and Adult Alcohol Involvement: A Longitudinal Exploration of the Direction of Influence." *Addictive Behaviors*. 26:181-199.

Bullers, Susan. 2000. "The Mediating Role of Perceived Control in the Relationship Between Social Ties and Depressive Symptoms." *Women and Health*, 231no. 2/3:97-116.

Bullers, Susan. 1999. "Selection Effects in the Relationship Between Women's Employment and Perceived Control." *Family Relations*, 48 no. 2: 181-188.

### **Publications (con't)**

Lerch, Patricia B., and Susan Bullers. 1996. "Powwows as Identity Markers: Traditional or Pan-Indian?" *Human Organization* 55 no.4:390-395.

Bullers, Susan. 1994. "Women's Work/Family Roles and Psychological Distress: The Mediating Effects of Perceived Control." *Women and Health*, 22 no. 2:11-30.

Mutchler, Jan E., and Susan Bullers. 1994 "Sources of In-Home Care in Later Life: Gender and Marital Status Differences." *Research on Aging*, 16 no. 3:235-50.

### **Report Chapter**

Bullers, Susan. 1997. "Women's Health" chapter, pp 29-50 in Charlotte Rath's, Ed., *Status of Women in New Hanover County*. New Hanover County Commission for Women (The New Hanover County Women's Commission received the 1997 Governor's Award for Outstanding Volunteer Service for the report listed above)

### **Book Reviews**

Bullers, Susan. 2002. "Women and Alcohol in Social Context: Mother's Ruin Revisited." Ed. Jan Waterson, in *International Review of Modern Sociology*. 30:1

Bullers, Susan. 1997. "Families of Employed Mothers: An International Perspective." Ed. Judith Frankel, in *Journal of Marriage and the Family* 59 no. 4:1033.

### **Published Abstracts**

Bullers, Susan, and Carol Prescott. 1998. "The Independent Contributions of Genetics, Shared Family Environment, and Adult Roles to Adult Perceived Control." *Sociological Abstracts*, August 1998.

Bullers, Susan. 1997. "Social Support and Psychological Distress: The Mediating Role of Perceived Control." *Sociological Abstracts*. August 1997.

Bullers, Susan. 1996. "Selection Effects in the Relationship between Women's Employment and Perceived Control." *Sociological Abstracts*. August 1996.

**Published abstracts (con't)**

Bullers, Susan, M. Lynne Cooper and Marcia Russell. 1995. "Social Network Drinking and Adult Alcohol Involvement: A Longitudinal Exploration of the Direction of Influence." *Alcoholism: Clinical and Experimental Research*, 19. 1995.

**Work in Progress**

Bullers, Susan and Sarah Burdette, "Ethnicity, Gender, and Alcohol"  
(First draft complete, previously presented)

Bullers, Susan, and Carol Prescott, "Effects of Ethnicity, Drinking History and Family Drinking History on Perceptions of Causes of Heavy Drinking."  
(This paper combines results from two previously presented papers; paper in progress)

Bullers, Susan and Javier Gontier, "Gender, Cohort, and Drinking Norms; A Comparison between the US and Chile" (In progress- this project is in cooperation with CONACE, the National Drug and Alcohol Abuse agency in Chile)

Yeon Soo Kim-Godwin, Caroline Clements, Susan Bullers, Michael Maume. "Sexual Behaviors, Drinking Patterns and Perceived Control among Middle and High School Students" (First draft)

**Grants**

2004 Grant from UNCW Provost's Office to extend work from Fulbright-Hayes Chile Seminar, \$3000.00.

2004 UNCW Research Reassignment for project titled "Gender Differences in Drinking Patterns: A Cross-Cultural Comparison between Chile and the United States."

- 2004 International Programs, \$500.00, International Travel Award for project titled "Gender Differences in Drinking Patterns: A Cross-Cultural Comparison between Chile and the United States."
- 2003 Fulbright-Hays Seminar "Internationalization through Faculty Development: Contemporary Chile." Five week cultural and research exchange.

### **Grants (con't)**

- 2002 UNCW Crossroads Program. "The Effects of Self-Administered Blood Alcohol Concentration Testing on BAC Estimates, Drinking Behavior, and Risk Taking Behavior." \$3,240.00
- 2000 Awarded a scholarship from the World Congress on Psychiatric Genetics and NIAAA to attend and present "Beliefs about the Causes of Alcoholism and Drinking Patterns in Two Age Groups," at the International Psychiatric Genetics meetings in Versailles, France, in August 2000. \$1685.00.
- 2000 Awarded a grant from the UNCW International Programs for travel to present "Beliefs About the Causes of Alcoholism and Drinking Patterns in Two Age Groups," at the International Psychiatric Genetics meetings in Versailles, France, August 2000. \$500.00.
- 2000 Awarded a grant from the UNCW Deans Office for travel to present "Beliefs About the Causes of Alcoholism and Drinking Patterns in Two Age Groups," at the International Psychiatric Genetics meetings in Versailles, France, August 2000. \$500.00.
- 1998 "Perceived Control, Psychological Distress, and Industrial Hog Farms." UNCW Charles L. Cahill Award for Faculty Research and Development. \$2500.
- 1996 "Development and Testing of a Role-Based Perceived Control Instrument." UNCW Charles L. Cahill Award for Faculty Research and Development. \$2500.
- 1996 Social Support, Perceived Control, and Psychological Well-Being," UNCW Summer Initiatives Award. \$3000.

### **Presentations at Professional Meetings**

- 2004 Bullers, Susan, Keely Geyer, and Sarah Burdette. "Ethnic, Sex, and Cohort Differences in Drinking Norms in the U.S." presented at the Annual Conference of the British Sociological Association, Medical Sociology Group, University of York, UK, 16-18 September, 2004
- 2003 Bullers, Susan and Jamie Cockman. "Follow-up Study on Use of Personal Breathalyzers and the Effects on Drinking and Risk Behavior" presented at the Academy of Criminal Justice Sciences Meetings in Boston, MA March 2003
- 2002 Bullers, Susan, and Melissa Ennis. "The Effects of Self-Administered Blood Alcohol Testing on Drinking and Risk-Taking Behavior" presented at the Mid-South Sociological Association Conference in Memphis, TN. October 19, 2002
- Presentations at Professional Meetings (con't)**
- 2000 Bullers, Susan, and Carol Prescott. "Beliefs About the Causes of Alcoholism and Drinking Patterns in Two Age Groups" presented at the International Psychiatric Genetics Meetings, Paris, France. August 29<sup>th</sup>, 2000.
- 1998 Bullers, Susan, and Carol Prescott. "The Independent Contributions of Genetics, Shared Family Environment, and Adult Roles to Adult Perceived Control" presented at the American Sociological Association Meetings in San Francisco. Aug 21-25, 1998.
- 1997 Bullers, Susan. "Social Support and Psychological Distress: the Mediating Role of Perceived Control" presented at the American Sociological Association Meetings in Toronto, Canada. August 9-13
- 1996 Bullers, Susan. "Selection Effects in the Relationship between Women's Employment and Perceived Control" presented at the American Sociological Association Meetings in New York City. August 16-21.
- 1995 Bullers, Susan. "Social Network Drinking and Adult Alcohol Involvement: A Longitudinal Exploration of the Direction of Influence" presented at the 25th Anniversary Celebration of the National Institute on Alcohol Abuse and Alcoholism, May 3, Bethesda Maryland. **(Invited Presentation)**
- 1995 Bullers, Susan. "Social Network Drinking and Adult Alcohol Involvement: A Longitudinal Exploration of the Direction of Influence" presented at the Research Society on Alcoholism Meetings, June 19-23, Steamboat Springs, Co.
- 1994 Bullers, Susan. "Psychological Well-Being and Transitions in Roles" presented at the Southwestern Sociological Association Meetings, March 30-April 2, San Antonio, Texas.

- 1993 Bullers, Susan. "Women's Employment and Perceived Control" presented at the American Sociological Association Meetings, August 12-17, Miami, Fla.
- 1993 Bullers, Susan. "Women's Work/Family Roles and Psychological Distress: the Mediating Effects of Perceived Control" presented at the Eastern Sociological Society Meetings, March 25-28, Boston, Mass.
- 1992 Bullers, Susan. "Employment and Parental Status, and Women's Global and Specific Sex-Role Attitudes" presented at the National Council on Family Relations Meetings, November 5-10, in Orlando, FL.

#### **Presentations at Professional Meetings (con't)**

- 1992 Bullers, Susan, and Jan Mutchler. "Formal and Informal Sources of In-Home Care in Later Life: Comparisons by Race and Sex" presented at the Population Association of America Meetings, April 30-May 2, in Denver, Co.
- 1991 Bullers, Susan. "Perceived Control, Sex, and Social Stratification" presented at the American Sociological Association Meetings, August 23-27, in Cincinnati, OH.
- 1991 Bullers, Susan. "Gender, Kinship Ties, and Social Network Density" presented at the Eastern Sociological Society Meetings, April 12-14, in Providence, RI.

#### **Selected Professional Activities**

- 1996-present. Reviewer for *Sociological Forum*, *Journal of Marriage and the Family*, *Journal of Applied Social Psychology*, *Gender and Society*, *Health Care for Women International*, *Family Relations* and *Journal of Studies on Alcohol*.
- 2001 Designed and conducted needs assessment survey concerning the UNCW Women's Resource Center, for the Women's Issues Task Force.
- 2001 Consultant for national Career Transition Study at Coastal AHEC. Deborah Covington, Research Director.
- 2000 Research consultant to New Hanover Regional Medical Center Residency in Family Medicine Program for survey construction and data analysis.

- 1999 Board of Directors- Pregnancy Prevention Program, Girls Inc. Wilmington NC
- 1997 Active participant in the NC Equity Statewide Agenda Assembly February 1, 1997, at the McKimmon Center in Raleigh, NC.
- 1996 Active participant in the 1996 New Hanover County Women's Commission agenda-setting seminar for matters concerning women's health.

### **Women's Studies and Resource Center**

I accepted the new position of Director of the UNCW Women's Studies and Resource Center in July 2005. This position involved setting up, staffing, budgeting, programming and directing a two-office academic and resource center.

### **Selected Projects in the Women's Studies and Resource Center**

Web-page development, mailing lists, and list-serves, budget development, hiring and training office assistant, graduate assistant and volunteers, conference attendance arrangements for students and faculty. I also collaborated with student groups and academic departments to organize and fund films, local, national, and International speakers, and programs related to gender, women's health, violence prevention, and globalization

Organized monthly faculty brown-bag research discussions

Supervised 12 independent study student projects including topics such as women and war, women's health, and women in the arts

Founding member and active participant in the UNCW interdisciplinary Center for Violence Studies

Initiated, developed and sought funding for a project on educational, procedural, environmental, and evaluative enhancements for the UNCW Health Services GYN clinic.

Collaborated with national and local entities to plan a Study Abroad program for Women's Studies minors

Developed a program for November '06 on parental leave policies in academia which involves seminars, a nationally known speaker, institutional research, national research, and policy development

Initiated, organized and received and institutional approval for a collaborative project involving production of a brief violence prevention DVD programs for administrators, and faculty.

Continued collaboration with the University C.A.R.E. Center and Crossroads Center on policies and programs addressing prevention of sexual assault and substance abuse

Served as faculty advisor for newly formed minority women's student organization

Collaborated with Office of Campus Diversity on programming and served on committee that developed, conducted, and analyzed a campus "climate" survey

#### Works with students-

In the faculty position in the Sociology/CRJ Department at UNCW I typically teach three courses per semester and most often taught Data Analysis, Medical Sociology, Social Psychology, as well as several Special Topics and Directed Independent Study courses (typically 3-6/yr). I have been very involved in supervising student research projects and regularly involve students on my projects. I have published and submitted papers with students. I frequently serve on Honors' and Masters' Thesis committees in the Anthropology and Psychology Departments as well.

**Christina Lanier**

Assistant Professor of Criminal Justice  
Department of Sociology and Criminal Justice  
University of North Carolina Wilmington  
601 S. College Road  
Wilmington, NC 28403-5978  
lanierc@uncw.edu

**Education**

- August 2006                   **PhD. Sociology**, University of Delaware, Newark, DE *Dissertation:*  
“Structure, Culture, and Lethality: An Integrated Approach to American  
Indian Homicide and Suicide”  
Major areas: Criminology and Research Methods and Statistics
- August 2000                   **M.A. Applied Sociology**, University of Central Florida, Orlando, Florida  
  
*Masters Thesis:* “Native Americans and Homicide: A County-Level  
Analysis Utilizing Social Disorganization Theory”
- August 1998                   **B.A. Sociology**, University of Central Florida, Orlando, Florida
- August 1996                   **Associate of Arts**, Valencia Community College, Orlando, Florida

**Publications**

- Lanier, Christina and Lin Huff-Corzine. (2006). American Indian Homicide: A County-Level  
Analysis Utilizing Social Disorganization Theory. *Homicide Studies*. 10, 181-194.
- Bachman, Ronet and Christina Lanier. (2006). Liberating Criminology: The Evolution of  
Feminist Thinking on Criminological Research Methods. In C.M. Renzetti, L. Goodstein, and S.  
Miller (Eds.), *Rethinking Gender, Crime and Justice: Feminist Readings* (pp.44-56). Los  
Angeles: Roxbury.
- Lanier, Christina. (2004). Review of *Violence in the Workplace: A New Approach to Dealing  
with Hostile, Threatening and Uncivil Behavior*, Richard V. Denenberg and Mark  
Braverman in *Homicide Studies* 8, 57-60.

**Works in progress:**

- Christina Lanier. “Social Correlates of Lethal Accidents Among American Indians.” preparing for  
submission to *Social Forces*.

Ronet Bachman and Christina Lanier. "Rape and Sexual Assault: A Comparison of Victimization Experiences by Race" preparing for submission to *Violence Against Women*.

### Employment

Fall 2006-present	Assistant Professor of Criminal Justice, Department of Sociology and Criminal Justice, University of North Carolina Wilmington
Fall 2005- Spring 2006	Adjunct Faculty, Department of Sociology, University of Central Florida
Fall 2002- Summer 2004	Course Instructor/Teaching Assistant, Department of Sociology and Criminal Justice, University of Delaware,
Spring 2002	Adjunct Faculty, Introduction to Sociology, Valencia Community College
Fall 2000- 2001	Visiting Instructor, Department of Sociology, University of Central Florida
Fall 1999- Summer 2000	Course Instructor/Teaching Assistant, Department of Sociology and Anthropology, University of Central Florida

### Professional Conference Presentations

"An Integrated Approach to Homicide and Suicide Among American Indians" to be presented at American Society of Criminology, Toronto, Canada, November 2005

"High Risk Drinking, School Achievement, and Delinquency: An Assessment of Alcohol Use Among Youth Populations." American Society of Criminology, Nashville, Tennessee, November 2004 (with Christine Eith)

"Sentencing Women to Death: A Gendered Analysis of Former Capital Jurors' Accounts." American Society of Criminology. Denver, Colorado, November, 2003 (with Benjamin Fleury-Steiner)

"Playing With Mother's Little Helper: How Do Adolescent Users of Illegal Prescription Drugs Differ From "Traditional" Drug Using Adolescents?" American Society of Criminology. Denver, Colorado, November 2003. (with Steven S. Martin, Cynthia A. Robbins, and Daniel J. O'Connell)

"Not Just Fun in the Sun: An Investigation of Florida County Homicide." American Society of Criminology. Chicago, Illinois, November, 2002 (with Lin Huff-Corzine)

“Lethal and Potentially Lethal Violence: An Exploratory County Level Analysis.” Homicide Research Working Group (Poster Session). St. Louis, Missouri, June, 2002. (with Jana Jasinski)

“Not Just Fun in the Sun: An Investigation of Florida County Homicide.” Homicide Research Working Group (Poster Session). Orlando, Florida June, 2001 (with Lin Huff-Corzine)

“Native Americans and Homicide: A County-Level Analysis Utilizing Social Disorganization Theory.” American Society of Criminology. San Francisco, California, November, 2000.

“An Investigation of Television Viewing Patterns”. Southern Sociological Society. New Orleans, Louisiana April, 2000 (with Corina Medley)

Christina Lanier. “Homicide Rates of Native Americans: A State-Level Assessment.” Mid-South Sociological Association. Jackson, Mississippi, October, 1999.

“A Comparison of White, Black and Native American Homicide.” Southern Sociological Society. April 1999.

### **Awards and Honors**

Fall 2002-2003            Presidential Fellowship, University of Delaware

Summer 1999            Minority Mentor Fellowship, University of Central Florida

Spring 1998            Cum Laude, University of Central Florida

### Professional Affiliations

American Sociological Association  
American Society of Criminology  
Homicide Research Working Group  
Southern Sociological Society

**Leslie Hossfeld**  
Assistant Professor  
GlaxoSmithKline Faculty Fellow in Public Policy and Public Engagement  
Department of Sociology and Criminal Justice  
University of North Carolina at Wilmington  
601 South College Road  
Wilmington, North Carolina 28403 USA  
Voice:910.962-784  
[Hossfeldl@uncw.edu](mailto:Hossfeldl@uncw.edu)

---

### **Education**

- 2002                      PhD, Sociology, North Carolina State University, Raleigh, NC  
Areas of concentration: Social Change and Development; Inequality  
(Race, Class and Gender) Dissertation: *"They Say the River Ran Red  
With Blood" Narrative, Political Unconscious and Racial Violence in  
Wilmington, North Carolina*, directed by Michael D. Schulman
- 1986                      MSS, Sociology, University of Mississippi, Oxford, Mississippi  
*Hegemony, Resistance and the WPA Mississippi Slave Narratives*
- 1983                      BA, History, University of North Carolina at Wilmington

### **Professional Work Experience**

- 2005                      Assistant Professor, Department of Sociology and Criminal Justice  
University of North Carolina at Wilmington.
- 2002 - 2005              Assistant Professor, Department of Sociology, Criminal Justice and Social  
Work, University of North Carolina at Pembroke.
- 2004-05                      GlaxoSmithKline Faculty Fellow in Public Policy and Public Engagement,  
Institute for Emerging Issues, North Carolina State University. This  
Fellowship provides reassigned time to produce accessible "think pieces"  
on important policy issues related to job loss and economic restructuring  
in North Carolina. The task for faculty fellow is to write and act in ways  
that improve policy in North Carolina, to engage in one substantial policy-  
making activity beyond the walls of the academy, and to participate in  
public events, that inform opinion makers and leaders from across North  
Carolina.
- 2006- present              Research Associate Southeast Region Center for Integrating Research  
and Action (CIRA) Poverty Reduction Project – Chapel Hill

2004- present	Research Affiliate, International Gender and Trade Network, Center for Concern, Washington, DC
2002 – present	Center Research Associate, Center for Social Work Research and Practice, University of North Carolina at Wilmington.
2000-02	Adjunct Faculty, Department of Sociology and Criminal Justice University of North Carolina at Wilmington
1998-2000	Visiting Instructor, Department of Sociology and Anthropology, North Carolina State University
1995-1998	Teaching Assistant, Department of Sociology and Anthropology North Carolina State University
1987-1994	Head of Unit and Senior Lecturer, University of Bophuthatswana, South Africa, Special English Unit (SPEN). Rural education research and curriculum development; student internship program.

### **Public Sociology Projects**

2004 – 2006	Nominated and appointed to the <i>American Sociological Association Task Force on Public Sociologies</i> . I serve as <i>Chair</i> of the Task Force Subcommittee on Documenting and Developing Public Sociology. Our charge is to propose ways to validate on-going public sociology projects and document the extent and scope of public sociology practice; develop guidelines for evaluating public sociology for merit and promotion, and propose incentives and rewards for public sociology.
2003-ongoing	<i>Jobs For The Future Project</i> <a href="http://www.povertyeast.org/jobs/">http://www.povertyeast.org/jobs/</a> . A collaborative piece of public sociology I have been working on with my students at UNCP as part of a community-based research project, and the Center for Community Action in Lumberton, in which we examine the socio-economic impact of job loss on one rural county. The <i>Jobs For The Future Collaborative</i> is a public/private collaborative of over 70 individual and organizational affiliate members that meet monthly to address issues of job loss, sustainable development, and local, state, and federal policy advocacy in Robeson County, North Carolina. Robeson County has lost over 9,000 jobs since 1993. We have collected and examined both qualitative and quantitative data on the impact of job loss on the county. I presented findings from this research, along with policy recommendations, to the <b>Congressional Rural Caucus in Washington DC on 30th March, 2004</b> . In addition, 150 community members including displaced workers, academics, public and private sector leaders, practitioners and community organizers bused to Washington, DC to provide testimony on the impact of job loss on Robeson County. Other phases of the <i>Jobs For The Future Project</i> include a \$20 million

public/private program for sustainable, small business development and capacity building; worker training in entrepreneurial skills and worker advocacy. We work closely with the UNCP Regional Center for Economic, Community and Leadership Development. I received an American Sociological Association Community Action Research Initiative (CARI) grant for this research.

- 2005 Congressional Rural Caucus – *Policy Initiative Rural Data Collection and Research*. I am working with the Congressional Rural Caucus, through the office of Congressman Mike McIntyre (NC) to establish a working-group of federal and state data collection agencies to support extensive research on comparative studies on rural job loss and recovery in the US. Our first meeting will be held in the Spring 2005 in Washington, D.C. with measurement experts from the Office of Management and Budget, USDA-ERS, Bureau of Labor Statistics, Department of Commerce, and the US Census Bureau to develop policy-specific data bases (addressing confidentiality issues that inhibit data release).
- 2005 Organizer, Rural Women’s Equity Project. An offshoot of the *Jobs For the Future Project* is the development of a Rural Women’s Resource Network that creates networks for women workers, particularly displaced workers, and employers. We examine sector expansion in the region to match with workers in the area. Rural displaced workers in our region tend to be older and female. The network focuses on employer’s attitudes toward workers (notions about gender and age) as well as training of employees to match employer’s needs (received funding from Z. Smith Reynolds). In addition, I am currently working with the International Gender and Trade Network to measure the impacts of NAFTA (and DR-CAFTA) and trade liberalization generally on women, families and communities.
- 2004-2005 Co-organizer *National Conference on Job Loss and Recovery in Rural America*, co-sponsored by the American Sociological Association, the Society for the Study of Social Problems, The Rural Sociological Society, the Rural Policy Research Institute (RUPRI), Southern Rural Development Center, the Institute for Emerging Issues, and the North Carolina AFL-CIO. Over 400 people attended, and displaced workers received training at various workshops on entrepreneurial development, how to create a displaced worker council in Robeson County, and training as worker advocates. We have found that many community programs seek relief for the hardships of displacement, but seldom engage workers as leaders in new strategies for development, job creation and policy advocacy. *The Jobs For The Future* project emphasizes worker training for sustainable development and participation in policy advocacy and research. The second annual conference will be held September 2005.

- 2004 Presentation to the North Carolina Joint Committee on Growth and Economic Development, North Carolina State Legislature, Raleigh, North Carolina on research findings on the Socio-Economic Impact of Job Loss in Robeson County.
- 2002-ongoing Researcher and Coordinator *Eastern North Carolina Poverty Information Project*. <http://www.povertyeast.org>. This is a public sociology piece in which we compile and disseminate current information regarding the nature, extent and consequences of poverty and inequality in 41 Eastern North Carolina counties. Downloadable PowerPoint presentations, along with essays, are provided for use in schools, for grant writers, for public presentations to County Commissioners, etc. I give presentations on this research throughout the year. Eastern North Carolina Poverty Committee and Center for Social Work Research and Practice.

### **Publications**

- 2005 Hossfeld, Leslie. *Narrative, Political Unconscious and Racial Violence in Wilmington, North Carolina*. New York: Routledge
- 2006 Charleston, D., Hossfeld, L., and Schulman, M. *Services Delivery for Displaced Rural Workers: A North Carolina Case Study of the Theory and Reality of One-Stops Under Review*, *Rural Sociology*
- 2005 Hossfeld, L. *Why Engagement?* Institute for Emerging Issues, NCSU
- 2006 Hossfeld, L. Kelly, B. and T. McTague. *manuscript in progress*. *Rethinking the Life Course: Job Displacement and Aging Workers*, to be submitted to *Gender and Society*
- 2006 Hossfeld, L., Charleston, D., Schulman, M. and McTague, P., "Globalization and Worker Displacement: Is there Life after Converse?" Book Chapter, *The Impact of Globalization*, Praeger Publishing, invited chapter
- 2005 Hossfeld, L. *manuscript in progress* *HIV-Risk Behavior in Migrant Latino Population in Southeastern North Carolina: Creating a culturally specific intervention* to be submitted to *Affilia*
- 2005 Charleston, D., Hossfeld, L., McTague, T., Schulman, M., Stainback, K. *Globalization and Economic Restructuring: Job Loss in North Carolina* Manuscript in Progress, to be submitted to *Social Problems*
- 2005 Hossfeld, L. and Phil Nyden. "Task Force on Institutionalizing Public Sociology" American Sociological Association *Footnotes*, January Vol 33(1)

- 2006 Hossfeld, L. "Creating the Engaged Campus: Community-Based Research and Higher Education" to be submitted to *Journal of Higher Education*
- 2006 Price, Jammie & Hossfeld, Leslie. *On-line Versus Traditional Instruction: Teaching Research Methods*. Under Review *Teaching Sociology*
- 2004 Hossfeld, Leslie, Legerton, M. and Kuester, G. *SocioEconomic Impact of Job Loss in Robeson County, NC 1993-2003*. *Sociation Today*, Vol. 2, (2) Fall.
- 2004 Hossfeld, L., Mac Legerton and Gerald Kuester, *The Economic and Social Impact of Job Loss in Robeson County, North Carolina Preliminary Findings*, Congressional Rural Caucus, Washington, DC
- 2006 Hossfeld, L. and Legerton, M. *manuscript in progress*. An Organic Model of Community Development

### **Grants Received**

- 2006 Frankel, A. (Principal Investigator) and Hossfeld L. (Co-PI), *Parenting Education Planning Alliance*, Partnership for Children, \$10,000
- 2006 Received Summer Research/Curriculum Development Initiative Award from the College of Arts and Sciences Research Committee, UNCW, May 2006, \$3,500
- 2006 Legerton, M., Hossfeld, L., Zuber, B., Price, C., December 2005 Women's Economic Equity Project (WEE), Z. Smith Reynolds, \$300,000 over three years. I serve as lead researcher on this project for the Center for Community Action in Lumberton, North Carolina. WEE is a subsidiary of the Jobs for the Future Project. Funding goes directly to Center for Community Action. (N.B. This is part of the ongoing Jobs for the Future Public Sociology research I have been working on for the past three years.) Mac Legerton, Executive Director of the Center for Community Action, Leslie Hossfeld UNCW, Bob Zuber, Charles Price and John Parker were the key grant writers for this initiative).

- 2005 Schulman, M. (Principal Investigator) and Hossfeld, L. (Co-Investigator), *Pilot Project: Worker Displacement in Robeson County North Carolina: Consequences for Health Protection and Health Promotion* \$34,533, North Carolina Occupational Safety and Health Education Research Center (NCOSHERC), Center for Health Promotion and Disease Prevention (HPDP), and the Injury Prevention Research Center). Received notification of approval of proposal first round.
- 2005 Center for Community Action Women's Economic Equity Project, funding by Z. Smith Reynolds, \$12,000 (Co-organizer), Seed Grant – All funds go to Center for Community Action
- 2005 Hossfeld, Leslie. "Do We Still Like Latino Labor? Revisiting North Carolina Manufacturing Employers During Economic Downturn" Faculty Research and Development Program, University of North Carolina at Pembroke. \$3,000
- 2005 Hossfeld, Leslie. Teaching and Learning Center Grant, Community-Based Research, \$350.
- 2004 Hossfeld, Leslie. GlaxoSmithKline Faculty Fellowship Program in Public Policy and Public Engagement. *Faculty Fellows Program Institute for Emerging Issues*. \$16,000
- 2004 Hossfeld, Leslie, Michael Schulman, Mac Legerton. Sociological Initiatives Foundation grant application \$15,000 *Jobs ForThe Future Project: Worker Advocates*, not funded
- 2004 Hossfeld, Leslie. "Jobs For The Future Project: Community-Based Research," American Sociological Association Spivack Community Action Grant. \$2,500.
- 2004 Hossfeld, Leslie. Feminist Lectureship Campus Visit Award. Sociologists for Women in Society. \$1,500
- 2004 Hossfeld, Leslie. "Identifying Culturally Specific HIV Risk Behaviors in Latino Population Southeastern North Carolina: Making Prevention Services Culturally Grounded". Center For Aids Research (CFAR), University of North Carolina, Chapel Hill. \$11,175
- 2003 Hossfeld, Leslie. "The Socio-Economic Impact of Job Loss in Robeson County: Mapping Economic Restructuring" Faculty Research and Development Program, University of North Carolina at Pembroke. \$3000
- 2003 Hossfeld, Leslie. Sociology of Poverty. Teaching and Learning Center; University of North Carolina at Pembroke. \$650

2003 Hossfeld, Leslie. Teaching and Learning Center Travel Grant, University of North Carolina at Pembroke, \$350

**Professional Presentations**

- 2006 January 27-30 – Paper presentation conference *Sociologists for Women in Society- Gender in the Context of Globalization: Exploring Diversity and Change*, San Juan Puerto Rico
- 2006 March 2-3, 2006 – Invited speaker conference *Navigating the Global American South* University of North Carolina at Chapel Hill, *Globalization and Worker Displacement: Is there Life After Converse?*
- 2006 Invited speaker/participant in the *Rural Latino Round Table* April 2006, sponsored by East Carolina University and The Rural Center, Raleigh, North Carolina
- 2006 Hossfeld, L., Charleston, D., Schulman, M. *Displacement and Aging* Conference paper presentation, Annual meetings, Society for the Study of Social Problems, Montreal, Quebec, Canada.
- 2006 Paper presentation *North Carolina Sociological Association* February 2006, *Public Sociology in North Carolina*
- 2006 Organized two sessions for annual meeting Society for the Study Of Social Problems August 2006, Montreal
- 2006 Invited participant Academic Workshop *Designing and Implementing Professional MA Degree Programs* – American Sociological Association Annual Meetings Montreal 2006
- 2006 Invited participant and speaker Center for Integrating Research and Action University of North Carolina at Chapel Hill, conference *North Carolina Sustainable Development and Poverty Reduction* July 13 and 14<sup>th</sup>.
- 2005 Hossfeld, Leslie and Phil Nyden *Teaching Public Sociology*. American Sociological Association, Philadelphia.
- 2005 Hossfeld, L., Kelly, B. and McTague, T. *Job Loss, Retirement and Recovery: Rethinking the Life Course*. Paper accepted at the annual meetings of the Society for the Study of Social Problems, Philadelphia

- 2005 Hossfeld, L. Discussant *Globalization and Restructuring in Rural America* conference organized by USDA-ERS and the Farm Foundation, Washington DC, June 6, 2005
- 2005 Schulman, Michael, Kevin Stainback, Donnie Charleston, Tricia McTague, and Leslie Hossfeld. *Worker Displacement: Lessons Learned from Research*, Southern Sociological Society, Charlotte, North Carolina
- 2005 Hossfeld, L. *The Advantages and Disadvantages of Community-Based Research: Jobs for the Future Project* Southern Sociological Society, Charlotte, North Carolina, session organizer, Jammie Price
- 2005 Simpson, Ida Harper, and Hossfeld, L. Changes in the North Carolina Economy, North Carolina Sociological Association, Durham, North Carolina
- 2005 Guynn, Anita, Leslie Hossfeld and Virginia Jones. *Community Based Research: Taking Research and Writing Beyond the Campus* CCCC Annual Meetings, San Francisco.
- 2004 Hossfeld, Leslie. *Gender and Job Loss*. Invited speaker for conference on "WTO + 10 meets Beijing + 10: The Impacts of Trade Liberalization on Women's Human Rights in the US", Center of Concern Promoting Global Justice and Peace, Washington, DC
- 2004 Hossfeld, Leslie. *Utilizing Research for Program and Policy Leverage in Rural Development and Recovery*, National Conference on Job Loss and Recovery in Rural America, Lumberton, North Carolina
- 2004 Hossfeld, Leslie. *Public Sociology: Displaced Workers Organize to Create Social Change*. Society for the Study of Social Problems, San Francisco.
- 2004 Hossfeld, Leslie and Mac Legerton. "The Social and Economic Impact of Job Loss in Robeson County: Jobs For the Future," *In the Shadows of Poverty: Strengthening the Rural Poverty Research Capacity of the South-* Southern Rural Development Center and RUPRI, Memphis, Tennessee
- 2004 Hossfeld, Leslie and George Conklin. *Blurring the Boundaries Between Teaching, Research and Service: Sociation Today*. Southern Sociological Society, Atlanta, Georgia.
- 2004 Spalter-Roth, Roberta and Leslie Hossfeld. *Funding Opportunities Through the American Sociological Association*. Southern Sociological Society, Atlanta, Georgia

- 2004 Hossfeld, Leslie. *Teaching Others About Sociology*, North Carolina Sociological Association, Chapel Hill, North Carolina.
- 2004 Hossfeld, Leslie. *Mother Earth: Gender and Land Reform in Southern Africa*, Southern Atlantic States Association for Asian and African Studies, Invited Keynote Speaker, St. Andrews College, Laurinburg, North Carolina.
- 2003 Hossfeld, Leslie. *Examining Inequality in Income and Education in Three Southeastern North Carolina Counties*, Wealth and Poverty Conference, University of North Carolina at Wilmington.
- 2003 Hossfeld, Leslie. *Racial Violence and Narratives of Terror*, Society for the Advancement of Socio-Economics International Conference, Aix en Provence, France.
- 2003 Hossfeld, Leslie. “*They Say the River Ran Red With Blood*” Narrative, *Political Unconscious and Racial Violence in Wilmington, North Carolina*. Society for the Study of Social Problems, Atlanta, Georgia.
2002. Price, Jammie, Leslie Hossfeld, Teresa Scheid, Giselle Santiago. *Crossing Borders: Studying Stratification*. North Carolina Sociological Association, Boone, North Carolina.
- 2001 Hossfeld, Leslie, Jeff Leiter and Donald Tomaskovic-Devey. “*We Like Latino Labor:*” *North Carolina Personnel Managers Reflect Upon the Growth of Latino Employment*. Southern Sociological Society, Atlanta, Georgia.
- 2001 Hossfeld, Leslie, Jeff Leiter, and Donald Tomaskovic-Devey. *North Carolina Employers Look at Latino Workers*. Paper presentation at the Governor’s Summit on Immigration, Greensboro, North Carolina.

### **Community Presentations**

- 2006 Hossfeld, L. Invited Guest speaker, Wilmington Newcomer’s Club, *Wilmington, 1898, November 2006*
- 2006 Hossfeld, L. Keynote speaker, Press conference, Congressman Mike McIntyre, Center for Community Action, Lumberton, *Release of new Poverty Data US Census*,
- 2005 Hossfeld, L. Keynote Speaker, Sustaining Rural American, Defining Our Common Future, Conference.

- 2005 Hossfeld, L. Speaker ***Displaced Worker Summit*** sponsored by the Rural Center and Center for Community Action, Lumberton, North Carolina.
- 2005 Hossfeld, L. Invited speaker: “*Jobs and Gender Justice: Promoting Jobs for Women and Trade Policies that Protect Them*” Consultation co-sponsored by Center for Community Action, International Gender and Trade Network, Washington, DC, and Institute for Emerging Issues, North Carolina State University.
- 2005 Invited by North Carolina Representative Garland Pierce to public meeting on , *Job Loss and Recovery in Southeastern North Carolina*, Center for Community Action, Lumberton, NC
- 2004 Invited guest on *The Learning Network Television* to discuss wealth and poverty in Eastern North Carolina, Southeastern Public Interest Net of North Carolina
- 2003 *Job Loss in Robeson County – Initial Findings* Research presented at press conference, Lumberton, North Carolina with Congressman Mike McIntyre
- 2003 Invited guest - Radio Talk Show – WAAV Radio Host Rhonda Bellamy – Topic: Poverty in Southeastern North Carolina
- 2003 Research Presentation – *African American Socioeconomic Status Wilmington, North Carolina 1970-2000* Center for Social Work Research and Practice, University of North Carolina at Wilmington
- 2003-04 *Jobs For The Future* Website. Describes preliminary research findings on job loss in Robeson County. [www.povertyeast.org/jobs](http://www.povertyeast.org/jobs). Data and essays are provided for public use in researching job loss in rural America. I have made several presentations on job loss to community and regional organizations.

### **Professional Service**

#### **2006**

Attended two-day training workshop *Cultural Competency: A Critical Leadership Skill Training Session*, sponsored by YWCA of the Lower Cape Fear , March 2006

Organized Public Sociology undergraduate Practicum Research presentation- May 2006

Reviewed Earl Babbie Research Methods text January 2006 Wadsworth/Thomson Publishing

Appointed to Election Committee for 2007 Southern Sociological Society (SSS)

Member and Consultant Subcommittee on Equal Access North Carolina Dislocated Workers Taskforce, March 2006

- 2004-06 Co-Chair, Subcommittee on Documenting and Developing Public Sociology, American Sociological Association *Task Force on Public Sociology*
- 2004-08 Editor, *Network News*, Sociologists for Women in Society publication. (Circulation 1000 copies, four volumes per year, average 40 pages per issue.)
- 2003-07 Executive Council Member, North Carolina Sociological Association Applied Sociology Task Force
- 2006 Organizer, Session on Gender and Job Loss, Southern Sociological Society, co-sponsored session with SWS-South, New Orleans
- 2005 Organizer, (invited by ASA President Troy Duster) *Teaching Public Sociology Workshop*, American Sociological Association, Philadelphia
- 2005 Organizer, Co-sponsored SWS-South and Sociological Practice Association Session on Job Displacement, Southern Sociological Society, Charlotte, North Carolina.
- 2005 Organizer, Session on North Carolina Sociological Association, Southern Sociological Society, Charlotte, North Carolina.
- 2005 Organizer, Session on North Carolina Economy, North Carolina Sociological Association, Durham, North Carolina
- 2005 Organizer, Conference *Forum on the Future: Reality and Opportunity in Eastern North Carolina*, May 6, 2005, East Carolina University, Greenville, North Carolina.
- 2004-05 Member, *Work Group on Comprehensive Services and the Local Response of the Rural Dislocated Worker Advisory Committee*, The Rural Center, Raleigh, North Carolina.
- 2004-05 Member, International Gender and Trade Network, Center of Concern, Washington, DC

- 2004 Consultant, Hispanic Economic Impact Survey for North Carolina, East Carolina University, Regional Development Institute
- 2004 University of North Carolina, Office of the President, Economic Development Leadership Forum
- 2004 Organizer, Cooperative Extension Rural Conference, North Carolina State University
- 2004 Planning participant/consultant, Rural Center planning committee, University of North Carolina at Wilmington
- 2004 Member, Latino Community Outreach Committee, University of North Carolina at Wilmington
- 2004-06 Nominated and appointed to American Sociological Association *Task Force on Public Sociologies*
- 2004 Discussant. Gender Session. American Sociological Association, San Francisco.
- 2004 Referee, *Gender, Work and Organization*
- 2004-05 National Liaison, Sociologists for Women in Society South
- 2003-05 President, Regional Chapter Sociologists for Women in Society, Southeastern Chapter
- 2003-05 Member, Social Action Committee, Sociologists for Women In Society
- 2002-03 Local Arrangements Committee, Sociologists for Women in Society, Wilmington, North Carolina.

**University Service**

- 2005-2006 Co-Chair MA Committee, Department Sociology and Criminal Justice
- 2006 Appointed by Chancellor and Provost to Diversity Council
- 2006 Appointed by Vice Chancellor International Studies to serve as Faculty Liaison for UNCW for Study Abroad South Africa
- 2005-2006 Faculty advisor Sociology and Criminal Justice Club

2005-present            Program Coordinator Public Sociology Program UNCW

**Community Service**

2006                      Coordinator UNCW-Wilmington Housing Authority Collaboration

2005                      Provide research assistance to New Hanover County *Partnership for Children*

2004                      Consultant/Planning Member – Rural Women’s Network – Z. Smith Reynolds and Center for Community Action.

2003                      Organizer – *Common Cause North Carolina* Town Hall meetings for Robeson and New Hanover counties to discuss North Carolina Budget.

2003-04                    Founding member and co-chair of the coordinating committee for the *Community University Partnership (CUP)*. This organization works to bridge Robeson County community and UNCP professional services and to provide a forum for university and community needs to be addressed; and to link service-learning projects and community partners for UNCP.

2000- 2003                New Hanover County Commission For Women

2000 - present            Tutoring in Public Schools – I devote four hours a month to tutoring in the North Carolina public school system.

2002 - present            Center for Community Action, (CCA), Lumberton, North Carolina. I work extensively with the community center to organize various projects, most recently the *Jobs for the Future Project*, in which 3 buses of displaced workers, community organizers, professionals, students and faculty traveled to Washington DC to present testimony to the Congressional Rural Caucus and brief them on the socio-economic impact of job loss in Southeastern North Carolina. I also work with CCA on environmental projects, education training projects, displaced worker training projects, grant writing and research development. In addition, I worked with CCA to organize the *National Conference on Job Loss and Recovery in Rural America*, in which over 400 people attended, and displaced workers received training in workshops devoted to entrepreneurial economic development. My students in the Social Research Methods, Sociology and Poverty and Community Development Course work closely with the Center for Community Action on community-based research projects.

**Honors and Awards**

2005                      25<sup>th</sup> Anniversary Award, Center for Community Action, Community Engagement, in the area of Economy For Outstanding Leadership and

Contribution to the Well-Being of Community Life

- 2004 *Special Recognition Award, Outstanding Service to the University of North Carolina at Pembroke and Regional Community, Awarded by Provost*
- 2004 *Certificate of Appreciation for Leadership from The Leadership and Service Opportunities Program (LSOP), University of North Carolina at Pembroke*
- 2004 *Received the American Sociological Association's Sydney S. Spivack Program in Applied Social Research and Social Policy Community Action Research Award*
- 2003 *Received the Nancy Pollock Dissertation Award for Outstanding Scholarly Research Benefiting the North Carolina Economy and the Quality of Life for its Citizens North Carolina State University*
- 2002 *Nominated for American Sociological Association Outstanding Dissertation Award, North Carolina State University*
- 1999 *Nominated and Inducted into, Alpha Kappa Delta, International Honors Society for Sociologists*
- 1998 *Nominated and inducted into, Sigma Iota Rho, National Honors Society for International Studies*
- 1998 *Outstanding Teacher Award, Department of Sociology, North Carolina State University*
- 1986 *Winner Outstanding Graduate Student Paper Award - Mid South Sociological Association, Tougaloo College, Jackson, Mississippi*

**Courses Taught**

Community Development	Social Problems
Research Methods	Social Statistics
Sociological Concepts	Computers and Society
Gender and Society	Sociology of Poverty
Demography	Social Change
Introduction to Sociology	Sociology of the Family
Race and Ethnic Relations	

**Research Interests**

Creating Engaged Campuses	
Community-Based Research	Public Sociology

Economic Restructuring	Gender and Job Loss
Community Asset Development	Race and Inequality
Aging and Job Loss	Poverty
Job Loss as a Social Justice Issue	Economic Development

**Memberships in Professional Organizations**

Society for Applied Sociology  
 American Sociological Association  
 Southern Sociological Society  
 Society for the Study of Social Problems  
 Sociologists for Women in Society  
 Sociologists for Women in Society - South  
 Alpha Kappa Delta International Honors Society for Sociologists  
 Sigma Iota Rho, National Honors Society for International Studies  
 National Association for Women in Education  
 North Carolina Sociological Association  
 Society for the Advancement of Socio-Economics (SASE)

**Hossfeld Undergraduate Research Projects**

**UNCW Honors Committees Served On (list as follows):**

<u>Semester</u>	<u>Student Name</u>	<u>Project Title</u>
Fall 2005	Rachel Hamm	Security v Liberty Constitutional Challenges To Airport Security Checks (SOC-CRJ)
Fall 2005	Everette Fulmer	On-Line Communities (PHL & REL)

**Directed Individual Study Projects** (list as follows):

Katie Gay	<i>Breaking the Mold: Aiding Girls in Their Journey toward True Empowerment</i> Spring 2006 (recognized by Provost to represent UNCW at Board of Trustees Annual Meeting)
-----------	--

**UNCW Practica/Internships Directed**

<u>Semester</u>	<u>Student Name</u>	<u>Placement</u>
Fall 2005	Katie Gay	YWCA
Fall 2005	Leigh Angel Pope	Family Services Lower Cape Fear
Fall 2005	Shannon Smith	Union House Homeless Shelter
Fall 2005	Alexis Medlin	Wilmington Health Access for Teens
Fall 2005	Emily Strittmater	Family Services Lower Cape Fear

Fall 2005	Nikki Turner	Wilmington Health Access for Teens
Fall 2005	Heart Fowler	Wilmington Housing Authority
Fall 2005	Jenny Cash	Smart Start New Hanover County
Fall 2005	Stacie Allen	Wrightsville Beach Parks and Recreation
Fall 2006	Danielle Aldrich	Wilmington Housing Authority
Fall 2006	Casey Simmons	Wilmington Housing Authority
Fall 2006	Lynn Casper	Wilmington Housing Authority
Fall 2006	Rachel Stewart	Wilmington Housing Authority

### **UNCW Research Projects Supervised – SOC 496 Practicum Capstone Course**

#### **SPRING 2006**

##### **Heart Fowler Foxworth**

Identifying Barriers to Healthy Lifestyles in Wilmington Public Housing Communities

##### **Jenny Cash**

A Healthy Balance for Kids

##### **Alexis Medlin and Nikki Turner**

W.H.A.T.'s Going On? Teens and Sex in New Hanover County

##### **Stacie Allen**

What is the Determining Factor? ... (That Causes Kids to Gender Segregate)

##### **Leighangel Pope and Emily Strittmater**

Funding For Community Change

##### **Shannon Smith**

***Support in 12 Steps: Homeless Women Find Their Footing***

#### **BIO**

Leslie Hossfeld is assistant professor of Public Sociology at the University of North Carolina Wilmington. She was the 2004-2005 GlaxoSmithKline Faculty Fellow in Public Policy and Public Engagement at the Institute for Emerging Issues at North Carolina State University. Her research focuses on poverty and job displacement in rural North Carolina and she serves as lead researcher on the *Jobs for the Future Project* [www.povertyeast.org/jobs](http://www.povertyeast.org/jobs), a community-based-participatory research project addressing job loss in Robeson County, North Carolina. She has made presentations to the United States Congressional Rural Caucus and to the Joint Select Committee on Growth and Development of the North Carolina Legislature on the subject of job loss and rural economic decline. Hossfeld is a Research Affiliate of the International Gender and Trade Network, Center of Concern in Washington, DC and a Research Associate for the Center for Integrating Research and Action (CIRA) Poverty Reduction Project based at Chapel Hill. She is author of the book *Narratives, Political Unconscious and Racial Violence in Wilmington, North Carolina* published by Routledge (2005).

**RESUME**

**CLYDE O. MCDANIEL, JR.**

**PERSONAL DATA**

**Place of Birth:** Fayetteville, North Carolina  
**Marital Status:** Married, two children  
**Height:** 5' 4"  
**Weight:** 165 lbs.  
**Home Phone:** (910)285-8511  
**Home Address:** Wallace, North Carolina 28466

**EDUCATION**

**Ph.D. Degree:** Sociology (Applied Research,  
Urban Sociology, and Social Problems)  
University of Pittsburgh

**M.A. Degree:** Sociology (Psychology Minor),  
North Carolina Central University

**B.S. Degree:** Elementary Education,  
Fayetteville State University

**PROFESSIONAL EXPERIENCES**

**Teaching and Administration**

**Professor:** Dept. of Soc. & Crim. Jus.  
University of North Carolina  
at Wilmington (1996-Present)

**Professor and Chair:** Sociology/Law Enforcement  
Department, Southern University  
(4 Yrs.)

**Professor and Graduate  
Program Coordinator:** Sociology Department, Prairie  
View A&M University (6 Yrs.)

**Professor and Chair:** Department of Social Research,  
University of Houston (12 Yrs.)

**Associate Professor  
to Professor and Chair:** Department of Social Research,  
University of Pittsburgh (5 Yrs.)

**Assistant Professor:** Sociology Departments: Georgia  
State, Emory, and Atlanta  
Universities (3 Yrs.)

Research Administration

**Manager and Associate:** Consultec Incorporated, Wallace, NC

**Research Scientist:** Institute for Urban Studies,  
University of Houston

**Co-Director:** Urban Research Center,  
University of Pittsburgh

**Director of Research:** Education Improvement Program  
Atlanta and Emory Universities

Consulting

**Technical Associate:** The Institute of Cultural  
Affairs, Houston

**Researcher:** Southwest Regional OEO;  
Allegheny County Model Cities  
Programs; Pittsburgh Center for  
Educational Action; New York  
City Teacher Corps; Pittsburgh  
and Houston Drug Rehabilitation  
Centers; Houston V.A. Hospital;  
Bluebird Clinic; Houston  
Neighborhood Services Center;  
University of Texas Cancer  
Center; Nelson and Bingham Law  
Firm; and others

**Editor:** William C. Brown; Allyn and  
Bacon; McMillan; Phylon;  
University of Pittsburgh Press;  
The Journal of Comparative  
Studies; The Caucus of Black  
Sociologists' Newsletter; The  
Southwest Social Welfare  
Journal; Sociology and Criminal  
Justice News and Views; and others

SELECTED BIBLIOGRAPHY

Books

2004. 21st Century Africam American Social Issues and  
Popular Culture: A Reader. Stamford, CT: Thomson Learning (coediting  
with Anita K. McDaniel).
2000. 21st Century African American Social Issues: A Reader. Fort

Worth, Texas: Harcourt Brace Publishers (co-edited with Anita K. McDaniel).

1994. The Sociology of African Americans: A Reader. Fort Worth, Texas: Harcourt Brace Publishers.
1980. Issues in Marriage, Family and Therapy. Lexington, MA: Ginn.
1978. A Three Dimensional Analysis of Black Leadership. Houston, TX: University of Houston Press.
1974. Research Methodology: Some Issues in Social Science Research. Dubuque, IA: Kendall/Hunt.
1967. Relationships among Female Dating Roles and Reasons for Dating. Ann Arbor, MI: University of Michigan Press.

#### Articles and Book Chapters

2004. The 21st Century African American Family. In Anita K. McDaniel and Clyde O. McDaniel, Jr. (eds.). 21st Century African American Social Issues and Popular Culture: A Reader. Stamford, CT: Thomson Learning.
2004. We Do a Lot of Public Service. Sociology and Criminal Justice News and Views 4, 1, p. 7.
2004. Response to "Literary Archaeology and Para-Scholarship in Wold Newtonry." In The Wold Newton Universe, <http://www.pjfarmer.com/woldnewton/Articles10.htm>
2003. Sociology is All Around Us. Sociology and Criminal Justice News and Views 3, 1, pp. 5-6.
2003. The Twenty-First Century Family. Chapter 2 in Peri Bomar (ed.). Promoting Health in Families, 3rd ed. Stamford, CT: Thomson Learning.
2000. The Black Church and Community Action Through Youth Socialization and Mentoring. In Anita K. McDaniel and Clyde O. McDaniel, Jr. (eds.). 21st Century African American Social Issues: A Reader. Fort Worth, Texas: Harcourt Brace Publishers (pp. 207-224).
2000. The Requisite Research Model for Studying Research Issues. In Anita K. McDaniel and Clyde O. McDaniel, Jr. (eds.). 21st Century African American Social Issues: A Reader. Fort Worth, Texas: Harcourt Brace Publishers (pp. 371-381).
1999. Change and Survival in a Small, Rural, Multiracial Southern Town. Chapter 16 in Iris B. Carlton-LaNey, Richard L. Edwards, and P. Nelson Reid (eds.) Preserving and Strengthening Small Towns and Rural Communities. Washington, DC: NASW Press, pp. 213-224.

1999. How Social Science Research Can Inform Applied Sociology. Journal of Applied Sociology 16, 1, 38-50.
1998. The Biography of Rufus E. Clements: University President. \_ American National Biography vol. 6 (edited by John A. Garraty and Mark C. Carnes). New York: Oxford University Press.
1998. The Biography of Robert Archey Woods: Social Reformer and Educator. American National Biography vol. 24 (edited by John A. Garraty and Mark C. Carnes). New York: Oxford University Press.
1995. "Applied Social Research: Meeting the Challenges of the 21st Century." Sociological Spectrum 15, 1.
1992. "Bridging the Mental Health Needs of Black Families." In Human Service Delivery and Social Change: An African American Church Perspective, edited by Andrew Edwards. Cleveland, OH: Cleveland State University.
1991. "Housing Segregation of Blacks in the South." In Urban Housing Segregation of Minorities in Western Europe and the United States, edited by Beth Huttman, Julia Saltman and William Blau. Durham, NC: Duke University Press.
1991. "The Socio-economic Status of African Americans in Houston." In Houston 1991: Where We Are: An NAACP Report. Houston, TX: Houston Branch NAACP.
1990. "The Statistical and Geographical Abstract of the Black Population in Houston." In The Social, Economic, Political and Geographical Experiences of Blacks in Selected Cities, edited by Charles Christian. College Park, MD: University of Maryland Press.
1990. "Black Urban Ministry and Drugs." Social Science Perspectives Journal 4, 1.
1989. "Evaluation Plan for Extended Part-Time Study Programs." In Reader in Continuing Education. Washington, D.C.: Council on Social Work Education.
1988. "Review of a Prototypical Study of the Moral, Legal and Socio-psychological Implications of Artificial Heart Implantation." Originally published in Modern Hospital (107, 1, 1966) and republished in 1988.
1988. "Transferability of Multicultural Education from Training to Practice." International Journal of Intercultural Relations 12, 1.
1988. "Some Correlates of Realism of Occupational Choices among Black High School Students." Social Science Perspectives Journal 2, 1.

1987. (February). "Normalization of Mentally Retarded Offenders: Implications for Social Scientists." Corrections Today.
- 1987 (Spring). "Some Issues Regarding Research on Blacks." Griot 6, 1.
- 1982 (Spring). "Black Success Role Models." Black Caucus: Journal of The National Association of Black Social Workers 13, 1.
1978. "Public Service in Contemporary Universities." Southwest Social Welfare Journal 1, 1.
1978. "Socio-demographic Correlates of Sex-Role Stereotypic Attitudes." Southwest Social Welfare Journal 1, 1.
1978. "Patterns of Black Leadership." Journal of Education for Social Work 14, 1.
1976. "Incarnate Word Academy Facilities Evaluation." In Incarnate Word Academy: Recycling the Schoolhouse in the City. Houston, TX: UH College of Architecture.
1976. "Reaction to 'Research Perspectives on Ethnic Communities of Color'." In Cross-Cultural Perspectives: Six Symposia. Houston, TX: University of Houston Graduate School of Social Work.
- 1975 (August-September). "A Model for Optimal Social Service Delivery." Community Topics 2, 8.
- 1975 (May-June). "Designing a Neighborhood Information System (NIS)." Community Topics 2, 8.
- 1975 (March). An article on "Evaluating Social Service Agencies." Community Topics 2, 8.
1975. An article on "Generating and Maintaining Public Policy Knowledge Systems." Community Topics 2, 8.
- 1974 (August). "Some Suggestions for Weighting the Categories and Items of Faculty Workload." Indian Journal of Social Welfare 35, 3.
1973. "Adaptive Criteria for Program Evaluation." Psychology: A Journal of Human Behavior 9, 3.
- 1973 (October). "Toward a Revision of the Curriculum for Master's Level Education in Urban Schools." Indian Journal of Social Welfare 34, 4.
1972. "A Manual for Assessing Female Courtship Patterns." In Microfische Publications. Port Chester, NY: National Auxilliary Publication Services.

1972. "A Scale for Measuring Female Dating Behavior." In Family Measurement Techniques, edited by Murray A. Strauss. Minneapolis, MN: University of Minnesota Press.
- 1972 (March). "Des Aspects Socio-psychologiques des Convulsions Epileptiques (Some Socio-psychological Correlates of Epileptic Convulsions)." L'Encephale et L'Hyaieine Mentale 21, 3.
- 1971 (April). "Structural Conduciveness, Structural Strain and the Occurrence of Race Riots in America." Die SuidAfrikaanse Tydskrie Vir Sosiologie (The South African Journal of Sociology) 11, 2.
- 1971 (May). "The Occurrence of Race Riots in America." Psychology: A Journal of Human Behavior 8, 2.
- 1971 (April-May). "Some Procedural Statements on Appointment and Promotion in Professional Schools." The Social Work Education Reporter 19, 2.
- 1971 (October-November). "Imperatives for a Second-Year Research Experience in Graduate Schools." The Social Work Education Reporter 19, 3.
1971. "Toward a Professional Definition of Marriage Counseling." The Family Coordinator 20, 1.
- 1971 (November). "Expectations and Desires." Psychology: A Journal of Human Behavior 7, 4.
- 1971 (April). "The Effects of Participation in Extra-Curricula Activities on the Social Acceptance of Educable Mentally Retarded Students." Mental Retardation 9, 2.
1971. "Participation in Extra-Curricular Activities, Social Acceptance and Social Rejection among Mentally Retarded Students." Peabody Bibliography on Mental Retardation 1, 2.
1970. "Social Acceptance and Social Rejection of Mentally Retarded Students." Education and Training of the Mentally Retarded 5, 2.
1970. "Attaining Equilibrium (a Balance of Power) in a Community Education Center." In Evaluation of the NYU Community Education Centers: Vol. 3. New York, NY: NYU Center for Field Research and Services.
- 1970 (Summer). "A Research and Evaluation Model for an Office of Community Services." College and University Journal 9, 3.
1969. "Female Dating Roles and Reasons for Dating." Journal of Marriage and Family Living 31, 1. Also, reprinted in:

1970. Youth in Modern Society. New York, NY: Holt, Rinehart and Winston.
1971. A Reader in Marriage and the Family. Chicago, IL: Markham Publishing Co.
1974. The Sociology of Youth. Lexington, MA: Ginn Publishing Co.
1974. Social Organization and Reproductive Relations. Lexington, MA: Ginn Publishing Co.
1974. Interpersonal Relationships in Marriage and the Family. Lexington, MA: Ginn Publishing Co.
1977. Developmental Psychology: The Adolescent and Young Adult (First Edition). New York, NY: Dorsey Press.
1982. Developmental Psychology: The Adolescent and Young Adult (Second Edition). New York, NY: Dorsey Press.

#### Monographs

1987. Normalization of Mentally Retarded Offenders. College Park, MD: American Correctional Association.
1982. Editor. Abstracts of the 1981-82 Research Practica Theses. Houston, TX: University of Houston, GSSW.
1978. Editor. Occasional Papers in Social Welfare: Vol. 4. Houston, TX: University of Houston, Graduate School of Social Work.
1977. Editor. Occasional Papers in Social Welfare: Vol. 3. Houston, TX: University of Houston, Graduate School of Social Work.
1977. A Module for Teaching Housing Management. Houston, TX: Texas Southern University, School of Public Affairs.
1976. Editor. Occasional Papers in Social Welfare: Vol. 2. Houston, TX: University of Houston, Graduate School of Social Work.
1976. Philosophy and Strategies for Research Training in Graduate Schools of Social Work. Houston, TX: University of Houston, Graduate School of Social Work.
1975. Editor. Occasional Papers in Social Welfare: Vol. 1. Houston, TX: University of Houston, Graduate School of Social Work.
1972. An Assessment of the Need for Day Care Services among Students at the University of Pittsburgh. Pittsburgh, PA: University of Pittsburgh.

1971. The Impact of Community Action Regional Training on the Knowledge, Skills and Attitudes of Community Development Workers. Pittsburgh, PA: Pittsburgh Community Action Program.
1971. The Influence of OEO on the Demographic and Socio-economic Characteristics of the Municipalities of Allegheny County (from 1960 to 1970). Pittsburgh, PA: Allegheny County Community Action Program.
1969. Selected Essays on Research Methodology. Atlanta GA: Atlanta University.
- 1969 (February). An Evaluation of the Multi-Service Centers. Atlanta, GA: Southeastern Regional OEO. February.
- 1969 (January). An Evaluation of the Forest-Stone Area Opportunity, Inc. CAA. Atlanta, GA: Southeastern Regional OEO.
- 1968 (November). An Evaluation of the Adult Basic Education Component. Atlanta, GA: Southeastern Regional OEO.
- 1968 (October). An Evaluation of the Emergency Food and Medical Programs. Atlanta, GA: Southeastern Regional OEO.
- 1968 (September). An Evaluation of the Farmers' Cooperative. Atlanta, GA: Southeastern Regional OEO.
1966. Public Information Requisites for Fallout Shelter Systems. Pittsburgh, PA: American Institutes for Research.
1965. The Legal, Moral and Socio-Psychological Implications of the Total Implantation of the Artificial Heart. Pittsburgh, PA: Westinghouse Corp.

#### Book Reviews

1982. Grinnel, Richard M., Jr. (Ed.). Social Work Research and Evaluation. Itasca, IL: Peacock, 1981. Reviewed in the Journal of Education for Social Work 18, 3.
- 1971 (Winter). Feldstein, Stanley. Once a Slave. New York, NY: William Morrow, 1971. Reviewed in Phylon: A Journal of Race and Culture 32, Fourth Quarter.
- 1970 (Spring). Spellman, A. B. Black Music: Four Lives. New York, NY: Schocken Books, 1970. Reviewed in Phylon: A Journal of Race and Culture 31, First Quarter.
- 1970 (Spring). Moore, Chuck. I Was a Black Panther. New York, NY: Doubleday, 1970. Reviewed in Phylon: A Journal of Race and Culture 31, First Quarter.

1969 (Fall). Cleaver, Eldridge. Eldridge Cleaver. New York, NY: Random House, 1969. Reviewed in Phylon: A Journal of Race and Culture 30, Third Quarter.

#### PAPERS PRESENTED, SPEECHES AND TV/RADIO APPEARANCES

Presented many papers and made many speeches concerning sociological, educational, and social work issues (since the 1960's) at ASA, ASDA, SIETAR, CSWE, NASW, SAS, MSSA, SSSA, and local agencies and organizations. Also, appeared on numerous local TV and radio programs discussing various social issues.

#### DISSERTATIONS AND MASTER'S THESES

Atlanta University: Chaired and/or served as a member of several dissertation and master thesis committees in the School of Education.

University of Pittsburgh: Chaired and/or served as a member of many dissertation and master thesis committees in the Graduate School of Public and International Affairs, the School of Education, and the Graduate School of Social Work.

University of Houston, Prairie View A&M University, Southern University, and the University of North Carolina: Chaired and/or served as a member of many dissertation and over two hundred and fifty master thesis committees in the Colleges of Education, Social Work, and Arts and Sciences.

#### SCHOOL/UNIVERSITY COMMITTEES

Accreditation  
Doctoral  
Admissions  
Research  
Human Subjects Review  
Faculty Publications  
Public Affairs  
Graduate Faculty  
Others

#### MEMBERSHIPS IN PROFESSIONAL ASSOCIATIONS

National Education Association (NEA)  
American Sociological Association (ASA)  
American Educational Research Association (AERA)  
National Council on Family Relations (NCFR)  
Council on Social Work Education (CSWE)  
Southwest Social Science Association (SSSA), formerly, Social Work President  
Society for Applied Sociology (SAS)  
Mid-South Sociological Association (MSSA)

**PROFESSIONAL CERTIFICATION**

**CSW (Certified Social Worker) throughout the 1980's and 1990's in Texas). Was certified to enter into private practice and/or to do clinical sociology and social work.**

**CIVIC/PROFESSIONAL BOARD AFFILIATIONS**

**Urban League (Pittsburgh)  
Council on Public Education (Pittsburgh)  
United Mental Health/Mental Retardation (Pittsburgh)  
AIDS, Inc. (Houston)  
KPFT Radio Station (Houston)  
Waller County United Way (Waller County, TX)  
Texas Rural Leadership Program (Austin, TX)  
Area Agency on Aging (Houston)  
Hester House (Houston)  
United Way Allocations Committee (Wilmington, NC)  
Family Services (Wilmington, NC)**

**WEEKLY RADIO TALK SHOW HOST AND OCCASIONAL COLUMNIST**

**"Viewpoints" on KPVU Radio Station (for 3 years in Houston))  
Various Newspapers in the South and Southwest**

**VITA**

**NAME:** Cecil Lee Willis

**ADDRESS:** Office of Academic Affairs  
Alderman Hall 111  
University of North Carolina at Wilmington  
601 S. College Road  
Wilmington, North Carolina 28403-5900

E-mail:willis@uncw.edu

**TELEPHONE:** Office: (910) 962-3548  
Fax: (910) 962-3922  
Home: (910) 686-9528

**BIRTH DATE:** 9 September 1946

**EDUCATION:**

Ph.D. Virginia Polytechnic Institute & State University, 1977 (Sociology)

M.A. East Carolina University, 1974 (Sociology)

B.S. East Tennessee State University, 1968 (Sociology)

**PROFESSIONAL HISTORY**

2004- present Assistant Vice Chancellor for Academic Affairs and  
Professor of Criminal Justice, University of North Carolina  
Wilmington

1996 – 2004 Chair and Professor, Department of Sociology & Criminal Justice,  
University of North Carolina at Wilmington

1995-1996 Assistant Chair and Professor, Department of Sociology and  
Anthropology, University of North Carolina at Wilmington.

1987 - present Professor, University of North Carolina at Wilmington.

1982 - 1987 Associate Professor, University of North Carolina at  
Wilmington.

1977 - 1982                      Assistant Professor, University of North Carolina at Wilmington.

1973 - 1974                      Instructor, Gardner-Webb College  
Willis-Vitae

Page 2

**AREAS OF SPECIALIZATION:**

Criminology  
Criminal Justice Theory  
Sociology of Law

**PUBLICATIONS:**

**Refereed Journal Articles:**

17 refereed publications from 1977 to 2002. Only the most recent refereed publications are shown; full list available upon request.

**Cecil L. Willis**, T. D. Evans, and Randy LaGrange

1999 "‘Down Home’ Criminology: The Place for Indigenous Theories of Crime,"  
*Journal of Criminal Justice*. (May/June) 27( 3): 227-238.

Supancic, Michael and **Cecil L. Willis**,

1998 "Extralegal Justice and Crime Control," *Journal of Crime and Justice*, Vol.21 (2):  
191-215.

**Evans, T.D., Randy LaGrange, and Cecil L. Willis**

1996 "Theoretical Development of Comparative Criminology: Rekindling An Interest."  
*International Journal of Comparative and Applied Criminal Justice*.  
(Spring/Summer) 20(1): 15-29.

McNamee, Stephen J. and **Cecil L. Willis**

1994 "Stratification In Science: Patterns of Publication in Four Disciplines,"  
*Knowledge*, (June) 15: 396-416.

McNamee, Stephen J., **Cecil L. Willis**, and Ann Rotchford

1990 "Gender Differences in Patterns of Publication in Leading Sociology  
Journals, 1960 to 1985," *The American Sociologist*, (Summer) 21: 99-115.

**Willis, Cecil L.** and Stephen J. McNamee

1990 "Social Networks of Science and Patterns of Publication in Leading  
Sociology Journals, 1960 to 1985," *Knowledge*, (June) 11: 363-381.

**Willis, Cecil L.** and Richard H. Wells

1988 "The Police and Child Abuse: An Analysis of Police Decisions to Report Illegal Behavior," *Criminology*, (November) 26: 695-716.

Willis-Vitae

Page 3

**Book Chapters/Anthologies, Book Reviews, Proceedings, Essays :** 10 non refereed publications from 1977 to 2002. Only the most recent publications are shown; full list available upon request.

**Willis, Cecil L.**

2002 "A Review of the NRA's Eddie Eagle Program," *Family Relations: An Interdisciplinary Journal of Applied Studies* (October) 51 (4): 365.

Irwin, Darrell and **Cecil Willis**

2002 "Mapping Violence and Drug Arrests: Concentration or Diffusion of the Hot Spot," in Gerald Lynch (ed.) *Proceedings of the International Perspectives on Crime, Justice and Public Order*. London, England.

**Willis, Cecil L.**

1998 "'It Takes a Vill': Remembering George Hillery," *Quarterly Journal of Ideology*. Vol. 21(3/4): 1-6.

**Paper presentations.**

46 presentations made from 1977 to 2002. Only the most recent presentations are shown; full list available upon request.

Cecil L. Willis

2006 "Quality Assurance for Online programs: Why do it? How to do it?" TLT Conference, Raleigh, North Carolina 15 March – 17 March.

Ron Everett, Eric Jefferies, Darrell Irwin, and Cecil L. Willis

2002 "Targeting Violent Crime in Small Communities: Balancing the Demands of Intervention and Investment for Long Term Change," paper presented at the annual meeting of the *American Society of Criminology*, Chicago, November.

Darrell Irwin and Cecil L. Willis

2002 "Problem Oriented Policing Innovations in A Traditional Police Department," paper presented at the annual meeting of the *Academy of Criminal Justice Sciences*, Anaheim, March.

Cecil L. Willis and Darrell Irwin

2001 "Strict Enforcement of Firearm-Related Violence: Studying the Strategies of a Federal Task Force in Wilmington, North Carolina," paper presented at the annual meeting of the *American Society of Criminology*, Atlanta, November.

Darrell Irwin and Cecil L. Willis

2001 "Legal Cynicism and Perceptions of Neighborhood Control in High Crime Communities," paper presented at the annual meeting of the *Academy of Criminal Justice Sciences*, Washington, D.C. April.

Willis-Vitae

Page 4

T. David Evans and Cecil L. Willis

2000 "Crime in Cyberspace: Challenges for Criminology," paper presented at the annual meeting of the *Academy of Criminal Justice Sciences*, New Orleans, March.

### **Summary of Research Grants and Contracts:**

Only recent research grants are listed; information about 8 other grants/contracts in previous years will be provided on request.

Co-Principal Investigator (with Darrell Irwin) "A Study of the Effectiveness of the Wilmington Gun Violence Reduction Project," *Governor's Crime Commission*. Budget: \$53,912 with matching funds of \$4,492 from the *New Hanover County Commissioners*, and \$13,478 from *Pritzker Cousins Foundation*. Total: \$71,882.

Project Director, "Wilmington Gun Violence Reduction Project: Identification, Prosecution, and Monitoring of the Chronic Offender," *Office of Justice Programs*, U.S. Department of Justice, Washington, D.C. January 2, 2000-December 31, 2000. Budget: \$29,693.

### **Research Reports:**

Irwin, Darrell and Cecil L. Willis

2002 *A Study of the Effectiveness of the Wilmington Gun Violence Reduction Project – Final Report*. Governor's Crime Commission.

Willis, Cecil L.

1987 *Evaluation Study of Families In Crisis*, (September) Families In Crisis, Inc., Wilmington, North Carolina. 40 pages.

Willis, Cecil L. and Randy L. LaGrange

1987 *Juvenile Justice Diversion and Intervention Project: Final Report.* (August), Cape Fear Substance Abuse Center, Wilmington, North Carolina, 51 pages.

Willis, Cecil L. and Randy L. LaGrange

1986 *Juvenile Justice Diversion and Intervention Project: First Year Report.* (August) Cape Fear Substance Abuse Center, Wilmington, North Carolina, 40 pages.

Wells, Richard H. and Cecil L. Willis

1983 *Factors Associated With Decision to Contribute to United Way Fund Drive.* (May) by the United Way, Wilmington, North Carolina, 40 pages.

**Willis-Vitae**

**Page 5**

Wells, Richard H. and Cecil L. Willis

1983 *Factors Associated With Decision to Contribute to United Way Fund Drive.* (May) by the United Way, Wilmington, North Carolina, 40 pages.

Ferraro, Kenneth and Cecil L. Willis

1982 *Needs Assessment of the Mentally Retarded Citizens of New Hanover County,* (February) 19 pages.

Wells, Richard H. and Cecil L. Willis

1982 *Prevalence of Human Needs: An Interim Study of the Human Service Demand/Delivery Gaps in the United Way Area.* published by the United Way, Wilmington, North Carolina. 40 pages.

Wells, Richard H. and Cecil L. Willis

1982 *Needs Assessment: Perceptions Study Report.* Published by the United Way, Wilmington, North Carolina, 140 pages.

William Snizek, Donald J. Shoemaker, Clifton D. Bryant, J. Keith Abrams, Donald Compton, and Cecil L. Willis

1977 *Park and Forest Rangers: A Sociological Study of Ecological Stewardship in Virginia,* Blacksburg, Virginia.

**Recent Professional Meetings Attended (exclusive of paper presentations):**

TLT Conference, Raleigh, North Carolina 15 March – 17 March, 2006.

SCUP Mid-Atlantic Conference, Richmond, Virginia 2-4 April 2006

*North Carolina Sociological Association*, Wilmington, North Carolina, February 2002.

*Conference on Guns, Crime and Punishment in America*, The University of Arizona James E. Rogers College of Law, Tucson, Arizona, January 26-27, 2001.

*Annual Conference on Criminal Justice Research and Evaluation Change: Past, Present, and Future*, Sponsored by the National Institute of Justice, Bureau of Justice Assistance, and the Office of Juvenile Justice, July 16-19, 2000, Washington, D.C.

*North Carolina Criminal Justice Association*, Wilmington, NC, April 23, 1999.

*Economic Crime Summit*, Orlando, Florida, May 7-10, 1999.

**Willis-Vitae**

**Page 6**

Panel with Attorney General Janet Reno on Gun Violence in North Carolina, 106<sup>th</sup> *Annual Conference of International Association of Chiefs of Police*, Charlotte, North Carolina, October 30-November 3, 1999.

**Manuscript Reviewer:**

*Criminal Justice Review*, *Deviant Behavior*, *Journal of Crime and Justice*, *Journal of the History of the Behavioral Sciences*, Pine Forge Press, *Sociological Inquiry*, *Sociological Spectrum*, Wadsworth Publishing.

**Grant Reviewer:**

HEW, Guggenheim Foundation, National Endowment for the Humanities

**Professional Development Workshops:**

“Fully Online Web Course Development,” Web Course Development Team, UNC-Wilmington, May-June, 2002.

“Profiling Your Department/Program Assets,” Center For Teaching Excellence and Information Technology Systems, UNC-Wilmington, December 5, 2001.

“Geographic Information Systems (GIS) Workshop,” Earth Sciences Department, UNC-Wilmington, November 11, 2000.

“Technology for Distance Education Workshop,” North Carolina State University, September 16-17, 1998.

"Practical Aspects of Diversified Investigation Techniques," Southeast Planning Region for Criminal Justice Training, Wilmington, North Carolina, May 8-9, 1995.

**UNIVERSITY SERVICE**

Originated, coordinated, and provided instruction in the Summer Study Abroad program in Criminal Justice from 1992-1996.

Founded and organized first UNCW Criminal Justice Club.

Founded and organized first chapter of the UNCW Chapter of the Alpha Phi Sigma National Criminal Justice Honor Society.

Willis-Vita

Page 7

Served as Faculty Senate representative for department (several terms in 1980's & 1990's)

Served on Faculty Senate Steering Committee (1994-1997).

Ad-Hoc Committee on Evaluation of EPA Personnel, 1984-1987 (Chair, 1985-1987).

Evaluation Committee, January, 1990 to 1993 (Chair).

Chancellor's Administrative Cabinet, 1995-1996

Chancellor's Advisory Committee, 1995-1997

Technology Task Force, 1995-1996

University Planning and Quality Council, 1995-1996

Steering Committee, NCAA Certification Process, 1995-1996.

Chancellor's Representative, "Minority Over representation in the North Carolina Juvenile Justice System," Academic Forum Sponsored by North Carolina Governor's Crime Commission and North Carolina Division of Youth Services, September, 1991.

Dean's Representative, Workshop: "Developing a Comprehensive Faculty Evaluation System," San Francisco, March 9-10, 1993.

MPA Advisory Committee, 2001-present

Faculty Senate President (1995-1996).

Graduate School Faculty, 1990 – present.

NC Advisory Commission on Military Affairs Meeting at Seymour Johnson on April 13

Facilities Committee, 2005- present

University High School Planning Committee (chaired by Raymond Burt), 2005-2006

Co-Chair of E-Learning Committee, 2005-present

Conference Center Task Force, 2006- present

IT Strategic Planning Committee, 2005-2006

Willis-Vita

Page 8

### **COMMUNITY SERVICE:**

Advisory board memberships have included: Bannum Place (Federal Halfway House), Cape Fear Voluntary Action Center (Chair, Personnel Committee), Community Penalties Program (Chair, Public Relations Committee), Criminal Justice Advisory Board for Cape Fear Community College, Pfeiffer University Criminal Justice Advisory Board, State Child Abuse and Neglect Public Awareness Committee, Treatment Center for Women, and Families in Crisis.

I have written op-ed pieces in the *Wilmington Star-News* on perceptions of crime, equality in the justice system, and the incarceration rate.

I have given public lectures to local school, university groups, and community agencies on varied topics including, juvenile delinquency, the justice process, the prison population, crime victims, cults and ritualistic crimes, and youth and society.

I have also been interviewed numerous times by the local television stations, radio talk shows, and newspapers regarding various topics such as serial murder, prostitution, changes in the crime rates, women and crime, race and crime, teenage gangs, the death penalty, violence in the schools, the prison population, drugs and crime, and juvenile delinquency.

**KIMBERLY J. COOK, Ph.D.**  
Professor and Chair

**Education:**

1994, Ph.D., Sociology with specialization in Criminology, Family, and Social Policy.  
University of New Hampshire.

1990, Master of Arts (Sociology) University of New Hampshire, Durham, NH

1987, Bachelor of Arts with Distinction (Sociology), University of Maine, Orono, Maine

**Employment:**

2005 - present: Department Chair, Sociology and Criminal Justice, University of North Carolina Wilmington.

2005 - present: Professor of Sociology, University of North Carolina Wilmington

2003 B 2005: Chair, Department of Criminology, University of Southern Maine.

2000 - 2005: Associate Professor, Department of Criminology, University of Southern Maine. (Promoted to Associate effective September 1, 2000. Tenured September 1, 2001)

1995- 2000: Assistant Professor (tenure-track), Department of Criminology, University of Southern Maine

1994-1995: Assistant Professor (tenure-track), Department of Sociology, Anthropology and Social Work, Mississippi State University.

**Research Awards:**

2006, A Collaborative Research: Life After Death: Life Stories of Innocents After their Release from Death Row@ (co-author: Sandra D. Westervelt) grant proposal re-submitted to the National Science Foundation. Proposed budget: \$278,120, Declined.

2004 A Life After Death: Life Histories of Innocents After Their Release from Death Row@ (with Sandra Westervelt), submitted to the American Sociological Association, Fund for the Advancement of the Discipline. Proposed Budget: \$6990.00, awarded March 2005.

2003, A Life After Death: Life Histories of Innocents After Their Release from Death Row@ (with Sandra Westervelt) \$36,780 from University of North Carolina, Greensboro. Awarded.

2001, Fulbright Senior Scholar, Australian National University, January - June.  
Research: Restorative Justice Practices in Australia and New Zealand, Academic Host: John Braithwaite

## **PUBLICATIONS**

### **Book:**

Cook, Kimberly J. 1998. Divided Passions: Public Opinions on Abortion and Death Penalty Boston: Northeastern University Press.

### **Refereed Journal contributions:**

Cook, Kimberly J. 2006. "Doing Difference and Accountability in Restorative Justice Conferences." in *Theoretical Criminology* (10:1) 107-124, special issue on Gender, Race and Restorative Justice. Co-editors: Kimberly J. Cook, Kathleen Daly, and Julie Stubbs.

Cook, Kimberly J. and Chris Powell. 2006. "Emotionality, Rationality, and Restorative Justice." to appear in *Advancing Critical Criminology: Theory and Application*. Walter S. DeKeseredy and Barbara Perry, editors. New York: Lexington Books.

Donnelly, Denise, Kimberly J. Cook, Debra Van Ausdale and Lara Foley. 2005. "White Privilege, Color Blindness and Services to Battered Women." *Violence Against Women* 11: 6-37.

Cook, Kimberly J. and Chris Powell. 2003b. "Unfinished Business: Aboriginal Reconciliation and Restorative Justice in Australia." in *Contemporary Justice Review* 6:279-291.

Cook, Kimberly J. and Chris Powell. 2003a. "Christianity and Punitive Mentalities: A Qualitative Study." at *Crime, Law, and Social Change* 39: 69-89.

Cook, Kimberly J. 2000. "Abortion, Capital Punishment and the Politics of God's Will." *William and Mary Institute for the Bill of Rights Law Journal*, 9: 105 - 136.

Donnelly, Denise, Kimberly J. Cook, and Linda Wilson. 1999. "Provision and Exclusion: The Dual Face of Services to Battered Women in Three Deep South States." *Violence Against Women* 5 (7):710-741.

Cook, Kimberly J. 1998. "A Passion to Punish: Abortion Opponents who Favor the Death Penalty." *Justice Quarterly* 15(2):329-346.

### **Refereed Chapters in Scholarly Anthologies:**

Cook, Kimberly J. and Phoebe M. Stambaugh. 1997. "Tuna Memos and Pissing Contests: Doing Gender and Male Dominance on the Internet." in Everyday Sexism in the Third Millennium, Carol Ronai, Barbara Zsembik and Joe Feagin, editors. New York: Routledge Press. p. 63-83.

Cook, Kimberly J. 1993. "Pro-Death Politics: Debunking the 'Pro-Life' Agenda" in Political Crime in Contemporary America: A Critical Approach. Kenneth D. Tunnell, editor. New York: Garland Press. p. 49-77.

### **In progress:**

Westervelt, Sandra D. and Kimberly J. Cook, in progress. "Feminist Research Methods in Theory and Practice: Learning from Death Row Exonerees." In *Justice and Diversity: voices from the field*. Susan Miller (ed.) Boston: University Press of New England.

Cook, Kimberly J. in press. "Anti-Abortion Violence" in *Encyclopedia of Interpersonal Violence*. Claire Renzetti and Jeffrey Edleson, editors. Thousand Oaks, CA: Sage Publications.

### **Graduate Student supervision:**

External Reviewer for MA (Honors) Dissertation in the Department of Criminology and Criminal Justice, Griffith University (Brisbane, Australia) 2003.

External Reviewer for a Ph.D. Thesis at the Australian National University, Department of Sociology. 1998. Resubmitted and Re-examined, 2000

External Reviewer for Undergraduate Honor=s Thesis at Bates College, Department of Sociology. 2005.

### **PROFESSIONAL AFFILIATIONS AND SERVICE**

Editorial Board, *Feminist Criminology*, official journal of the Division on Women and Crime in the American Society of Criminology, 2004-present.

American Sociological Association, 1990 - present.

Crime, Law and Deviance Section

Student Paper Competition Committee, 1998-1999.

Task Force on Sociology and Criminology programs, two year appointment, 2006-2008.

American Society of Criminology, 1989 - present

Division on Women and Crime

Elected Secretary/Treasurer, 2001 B 2005

Internal Awards Committee, Chair, 2003, 2004, 2005

Interim Secretary (appointed), 2001 - 2002

Interim Treasurer (appointed), 2000-2001

Executive Board Member, 1998 - 2000

Outreach Committee, Chair, 1998-2000

Division of Critical Criminology

Gene Carte Student Awards Committee, 1998-2000

Employment Exchange Committee, 1998-1999, 2000 - 2002

Society for the Study of Social Problems, 1990 - present.

Permanent Organization and Strategic Planning Committee, 1997-2001

Elected to the Budget, Finance and Audit Committee, 2001 B 2004

Chair, 2003 - 2004

Appointed Chair of the By-Laws Committee, 2002 B 2005

Editorial and Publications Committee, ex-officio, 2003-2004

Chair, Ad-hoc Committee on Long Range Planning, 2003 B 2005

Vice-President-elect, 2004-2005; Vice-President, 2005-2006.

Sociologists Against Sexual Harassment (SASH), Co-Founder, 1991-1992  
Program Chair, 1992, Program Co-Chair, 1997, Program Coordinator, 1998  
International Coalition Against Sexual Harassment (formerly SASH)