

BIDS 2008 Installation Instructions

Operating System

Go to My Computer and select Properties.

Verify whether your machine is using Windows 32-bit or 64-bit Operating System, as well as what speed your processor is. System Requirements for SSRS BIDS is a 2GHz processor.

Windows 7 default installation is 32-bit.

Load BIDS 2008 software

Navigate to <\\techsupport\Software\Public\BIDS2008>

Based on what type of Windows your computer is using, select either

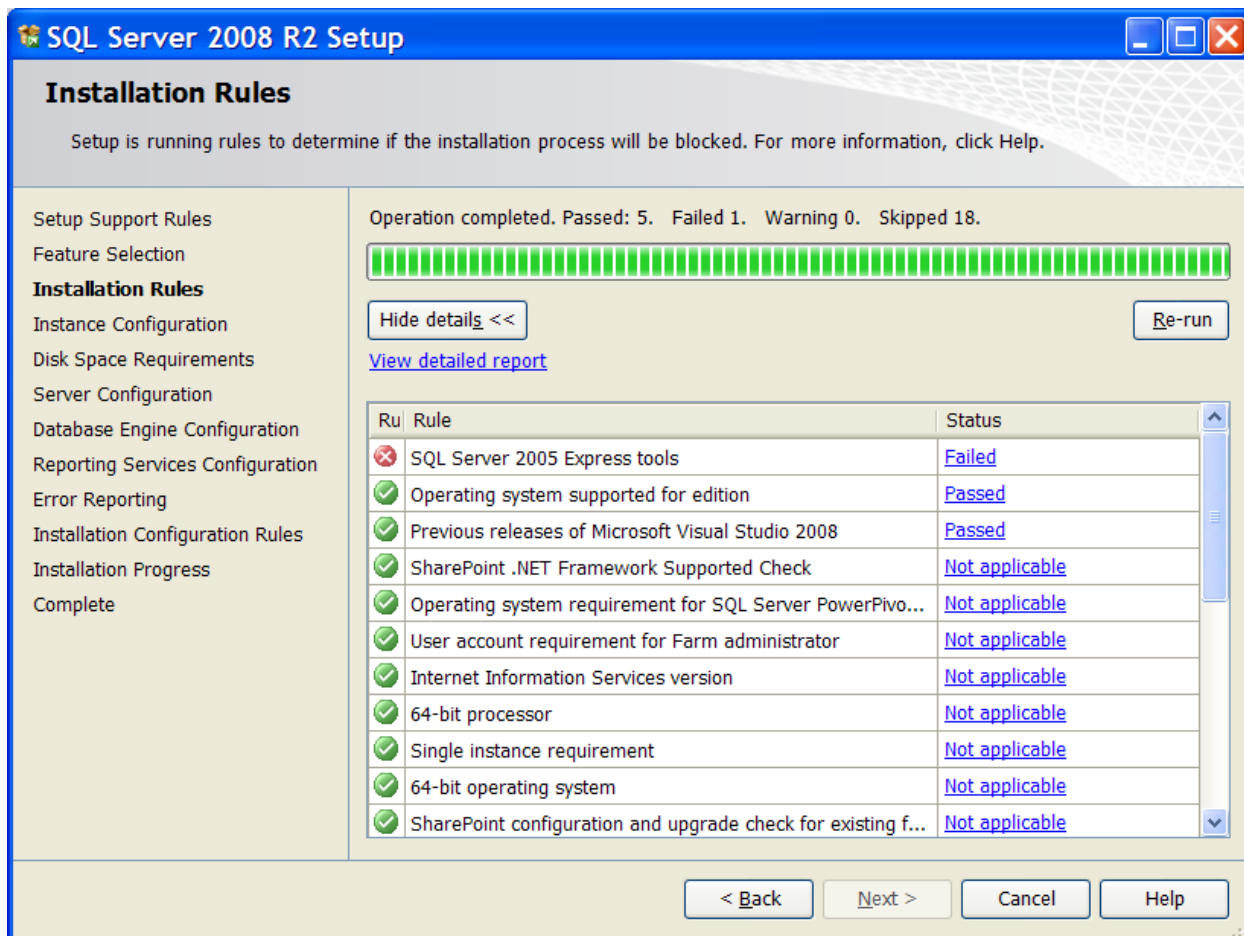
1. SQLEXPADV_x64_ENU.exe (64-bit)
2. SQLEXPADV_x86_ENU.exe (32-bit)

Double click file to run (it will take some time for the program to begin – approx. 5 minutes)

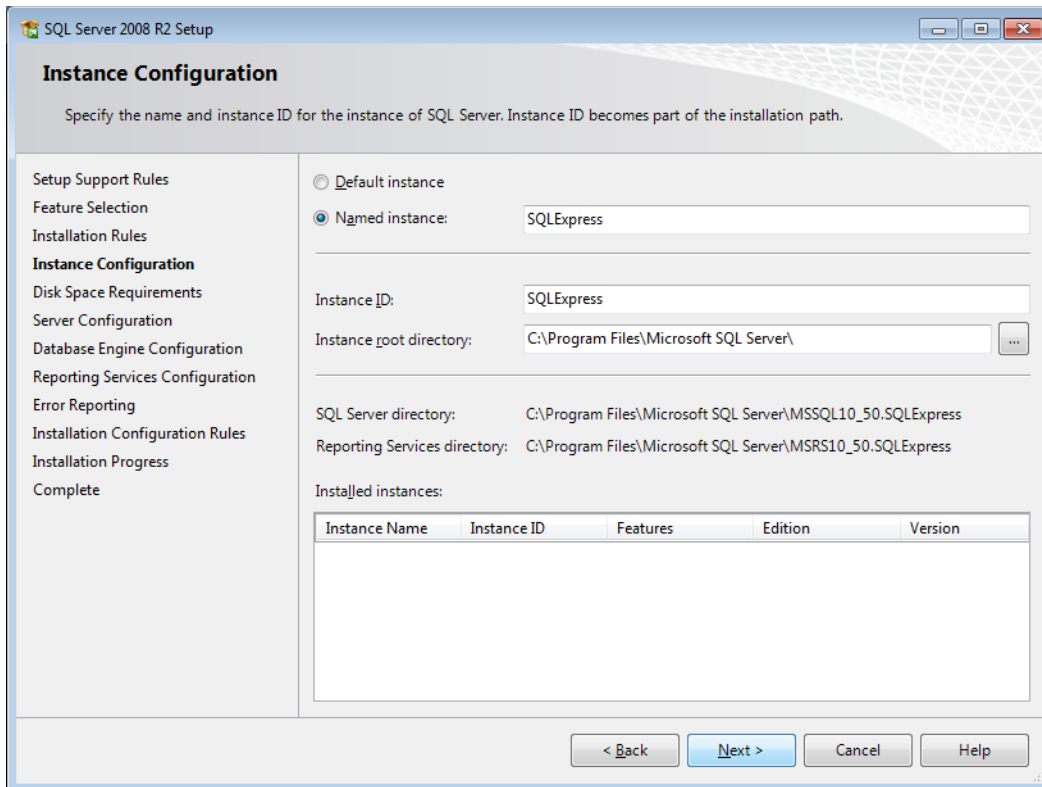
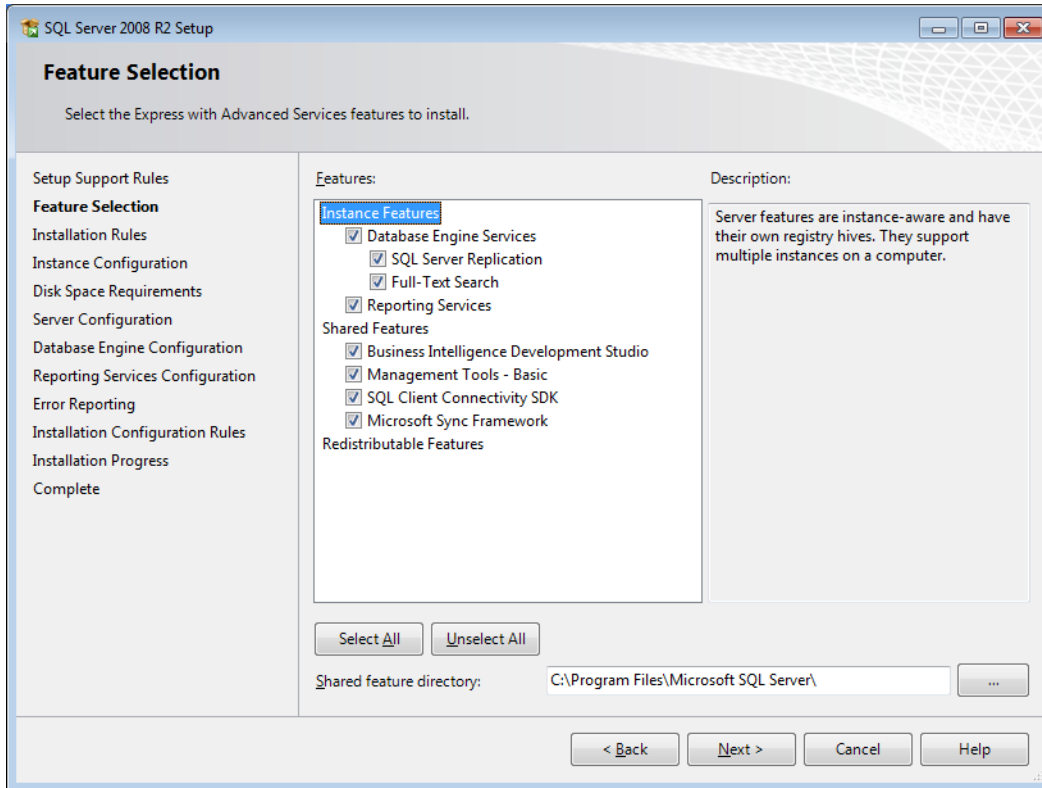
Once the installation utility begins:

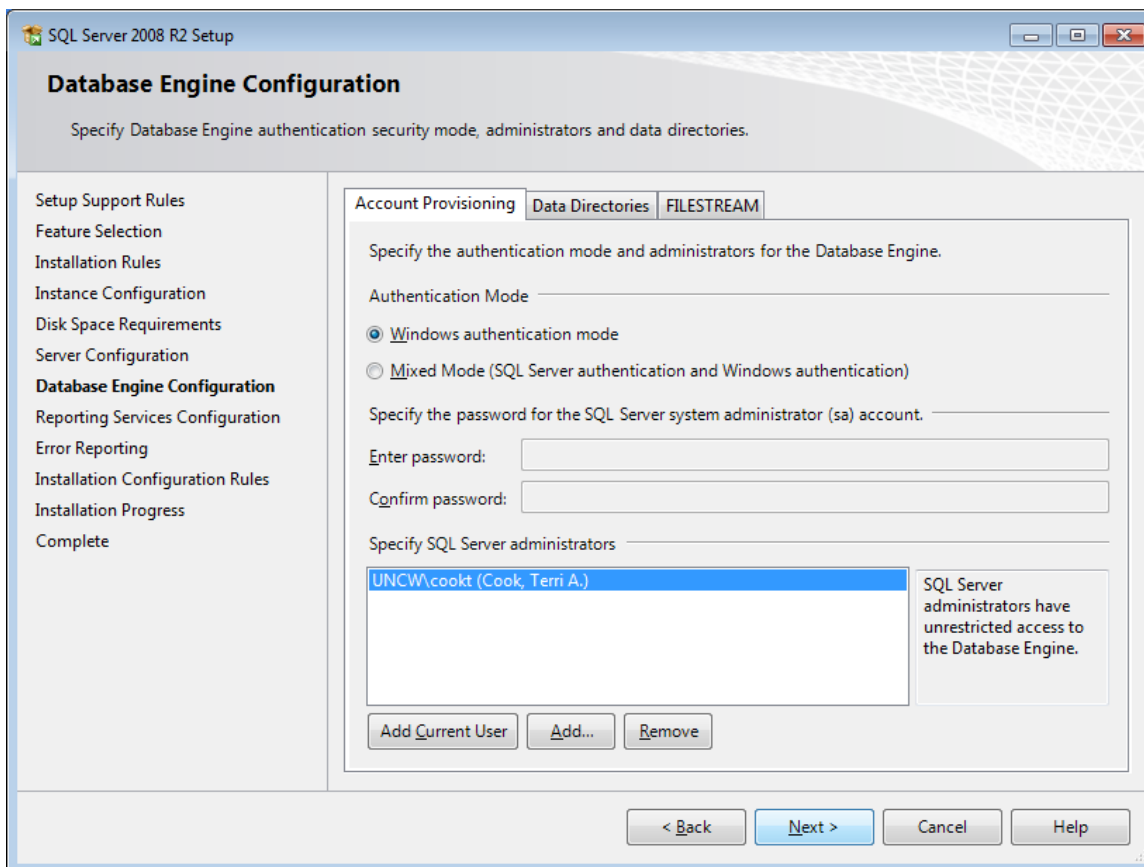
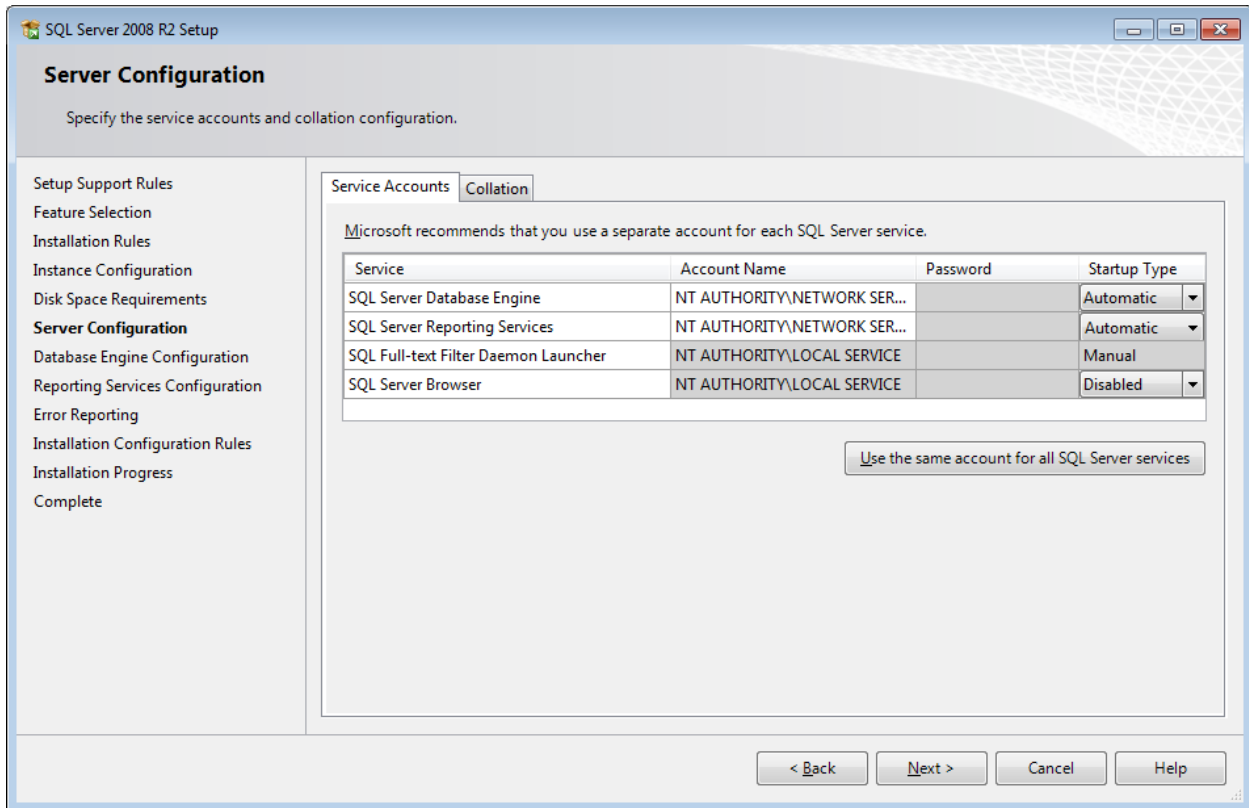
1. Select 'New Installation'
2. Accept licensing agreement
3. Accept defaults checked
4. Select **Next**
5. Instance Configuration – accept defaults - **Next**
6. Server Configuration – **populate Account Names per picture below**
7. Database Configuration – accept defaults - **Next**
8. Reporting Services Configuration – accept defaults - **Next**
9. Error Reporting – accept defaults - **Next**
10. After installation is complete, close Installation window.
11. See “SSRS 2008 Setting Defaults” and “SSRS 2008 Getting Started” instruction documents in SharePoint report developer’s site

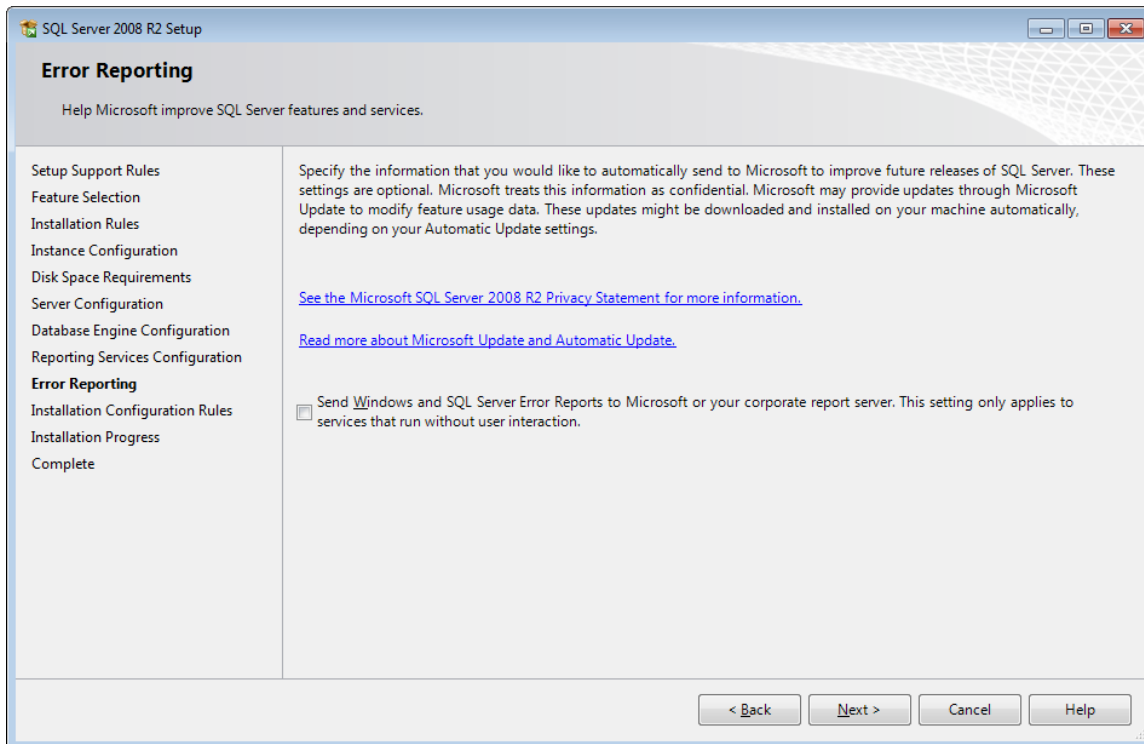
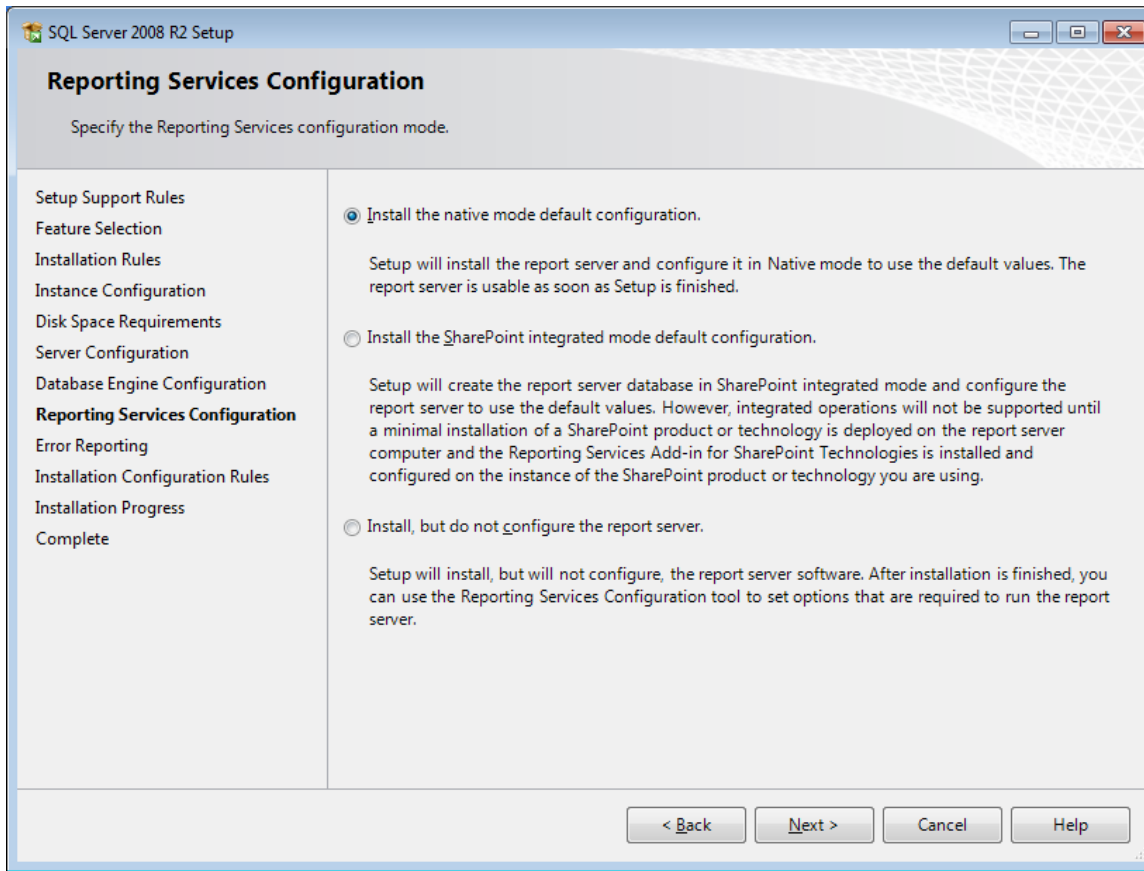
Note: If you receive an error on SQL Server 2005 Express tools (see picture below) you must first uninstall Microsoft SQL Server Management Studio 2005 before BIDS 2008 will load.



BIDS 2008 install pictures:







Appendix

Microsoft Site:

<http://www.microsoft.com/download/en/details.aspx?displaylang=en&id=25174#system-requirements>

System requirements

Supported Operating Systems: Windows 7, Windows Server 2003, Windows Server 2008, Windows Server 2008 R2

- 32-bit systems
 - Computer with Intel or compatible 1GHz or faster processor (2 GHz or faster is recommended.)
- 64-bit systems
 - 1.4 GHz or faster processor
- Minimum of 512 MB of RAM (2 GB or more is recommended.)
- 2.2 GB of available hard disk space

Here is the copy of the detailed [Systems Requirements](#) for your review.

[↑ Top of page](#)

Instructions

We recommend you read the [Microsoft® SQL Server® 2008 R2 Release Notes](#) and [Microsoft® SQL Server® 2008 R2 Readme](#) before installing Microsoft® SQL Server® 2008 R2.

Step 1: Download and install [Microsoft .Net Framework 3.5 SP1](#).

Step 2: Download and install [Windows Installer 4.5](#).

Step 3: Download and install [Windows PowerShell 1.0](#).

Step 4: Download [SQL Server 2008 R2 Express with Advanced Services](#) by clicking the appropriate link below.

[SQLEXPADV_X86 Executable](#)

[SQLEXPADV_X64 Executable](#)

[↑ Top of page](#)

Additional information

If you have a specific technical question about SQL Server 2008 R2 Express please visit the [SQL Server Express Forum](#).

- If you have questions about SQL Server2008 R2 Express, visit the [SQL Server2008 R2 forums on MSDN](#).
- [Register your personal copy of SQL Server2008 R2 Express](#).
- Building and shipping applications with SQL Server2008 R2 Express? Sign up for free redistribution rights [here](#).
- Help improve SQL Server 2008 R2 by [submitting bugs to Microsoft® Connect](#).